



Cockpit Smart Plug

Add/Remove User Manual

Before starting adding your module, please complete set up procedure for your COCKPIT gateway.

For more information about COCKPIT gateway set up procedure, please refer to the COCKPIT gateway User Manual.



Type: Smart Plug
Ordering code: CKNOFD

Date: 23.03.2020
Document: COCKPIT_Smart_Plug_Add.Rem_v2_eng

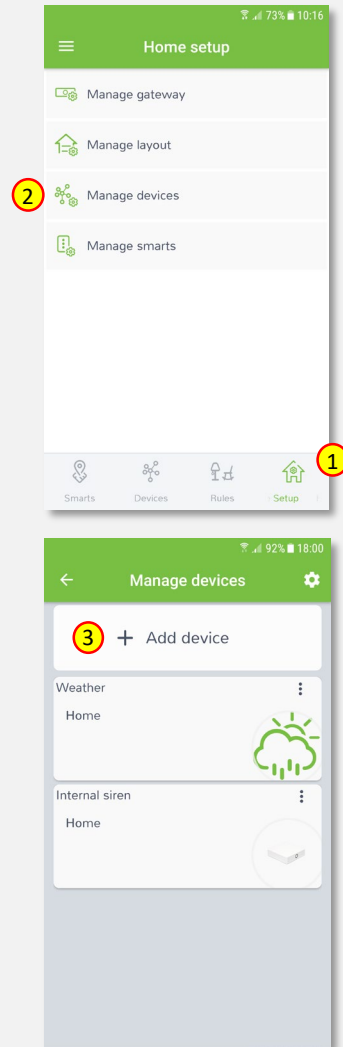
USER MANUAL **EN**

Adding Smart Plug

1. Click “Home Setup” tab located in the bottom of Cockpit@Home app.

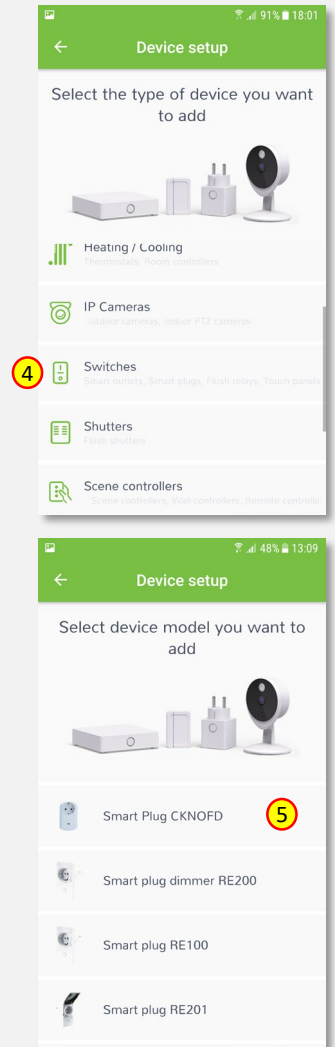
2. Click „Manage devices”.

3. Click „+ Add device”.

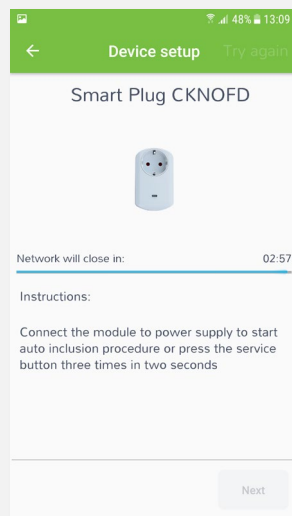


4. Select „Switches” from the list of available device types.

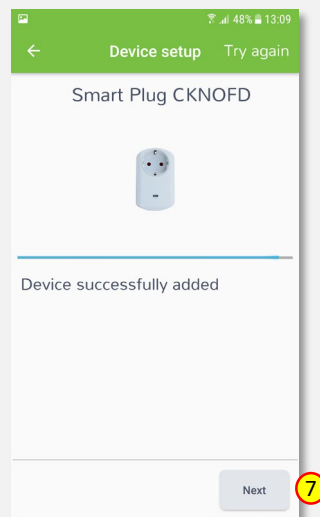
5. Select „Smart Plug”. COCKPIT gateway will open the network for inclusion.



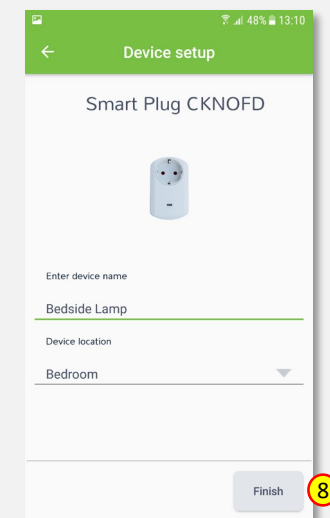
6. Connect Smart Plug module to the power supply to start auto inclusion procedure or press ON/OFF button three times in 2 seconds (if module was already connected to the power supply for more than 2 minutes).



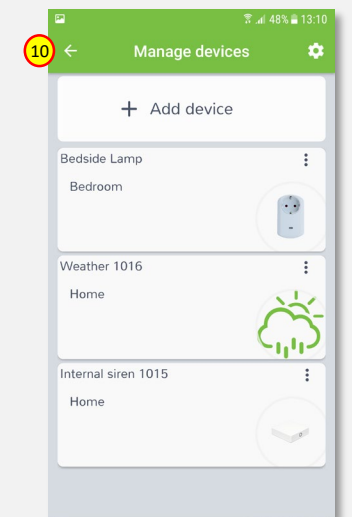
7. After successfully adding the device, an appropriate message will be displayed. Press „Next” button to proceed.



8. Name the device (e.g. Bedside Lamp) and select the room (e.g. Bedroom) for the Smart Plug module. When you are done, click “Finish” button.

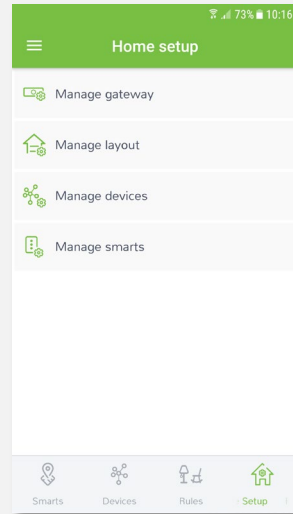


9. You will be directed to the screen with the list of all added devices, where the newly added Smart Plug module should be listed.



10. Press the arrow button to proceed.

11. The procedure of adding the Smart Plug module has been completed. You will be redirected to the “Home Setup” screen.



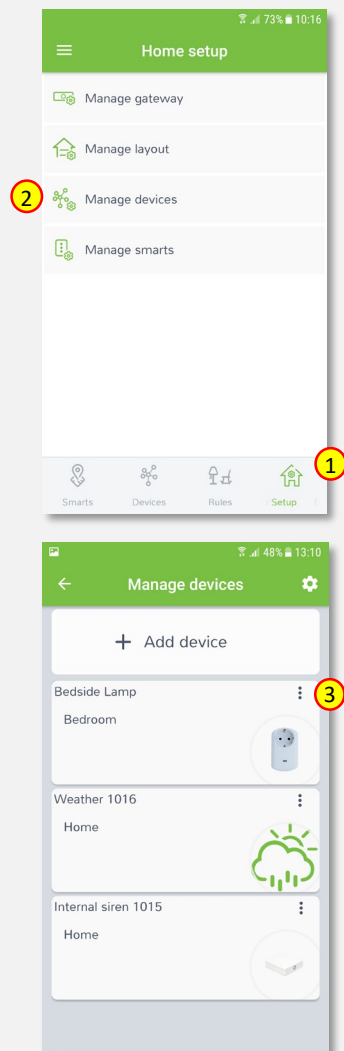
12. To locate newly added device, click “Devices” tab at the bottom of the screen.

13. If device is not shown on the list, choose the proper room by pressing „Device by location” button.

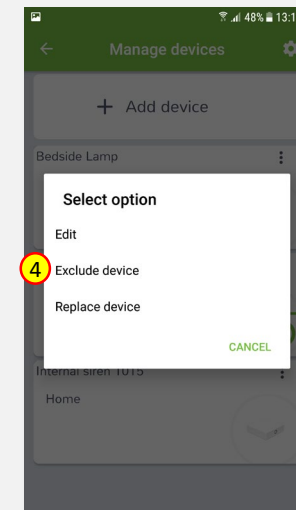


Removing Smart Plug

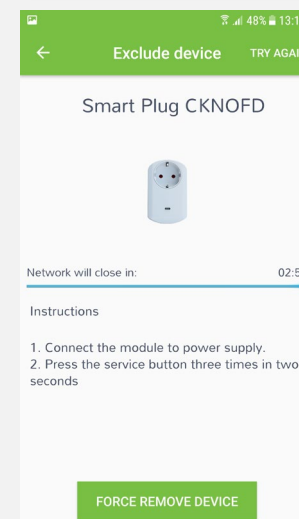
1. Click “Home Setup” tab located in the bottom of Cockpit@Home app.
2. Click „Manage devices” button.
3. Click on “settings” icon located next to the Smart Plug module name.



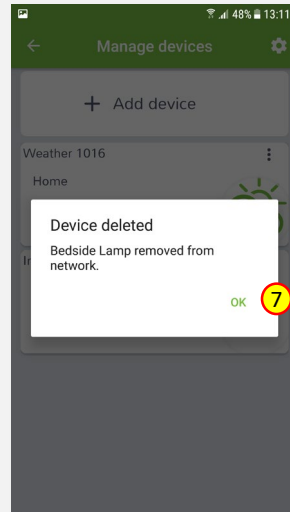
4. Select “Exclude device” option.



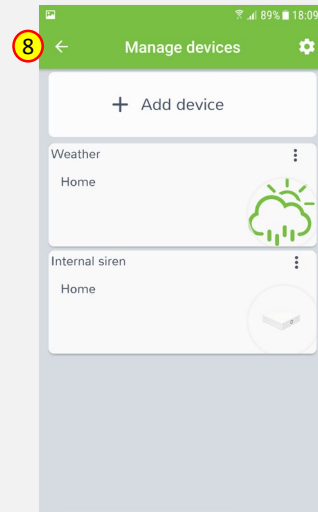
5. COCKPIT gateway will start “Exclude device mode”.
6. Remove Smart Plug module by pressing ON/OFF button three times within 2 seconds (please refer to the Smart Plug module user manual for more info).



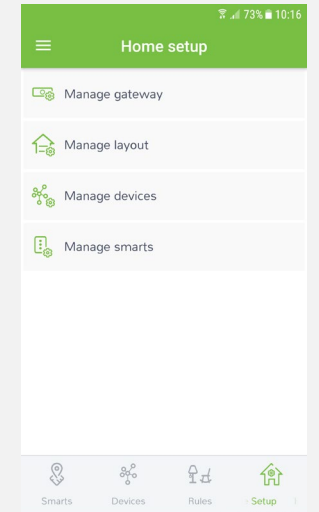
7. When the device / node have been removed, appropriate information will appear on the screen. Click “OK” button to finish the process.



8. You will be directed back to the screen with list of devices, where Smart Plug module is not present anymore. Press arrow button to proceed.



9. The procedure for removing the Smart Plug module is now complete. You will be directed to the “Home Setup” screen.





COCKPIT Smart Home d.o.o. Nova Gorica
Ulica Klementa Juga 007
5250 Solkan
Slovenia

E-mail: support@yourcockpit.biz
Tel: +386 5 335 95 00
Fax: +386 5 300 61 43
Web: www.yourcockpit.biz