



Cockpit Smart Plug 16A

Add/Remove User Manual

Before starting adding your module, please complete set up procedure for your COCKPIT gateway.

For more information about COCKPIT gateway set up procedure, please refer to the COCKPIT gateway User Manual.



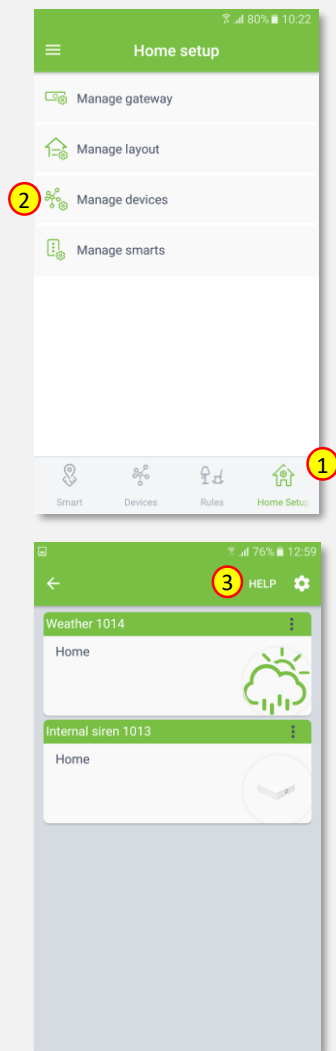
Type: Smart Plug 16A
Ordering code: CKNHYD

Date: 24.05.2019
Document: COCKPIT_Smart Plug 16A_Add.Rem_v1_eng

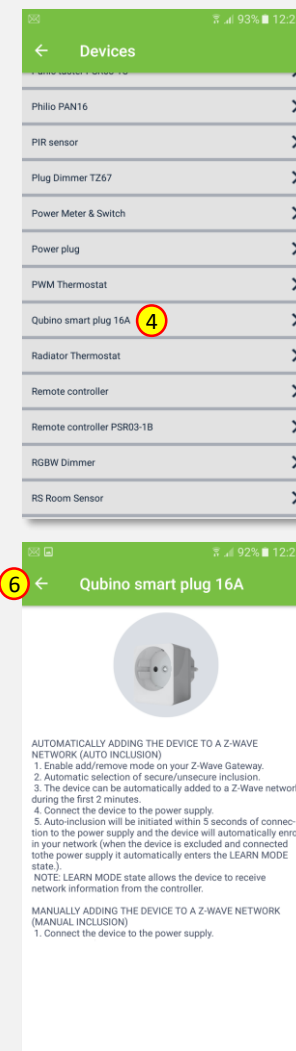
USER MANUAL **EN**

Adding Smart Plug 16A

1. Click “Home Setup” tab located in the bottom of Cockpit@Home app.
2. Click „Manage devices”.
3. Click „HELP” button. It will open the window with the list of instructions (for adding devices).

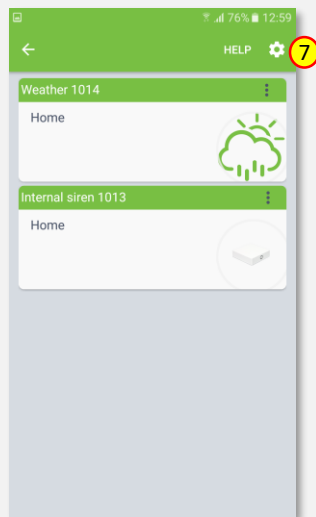


4. Select „Smart Plug 16A”.

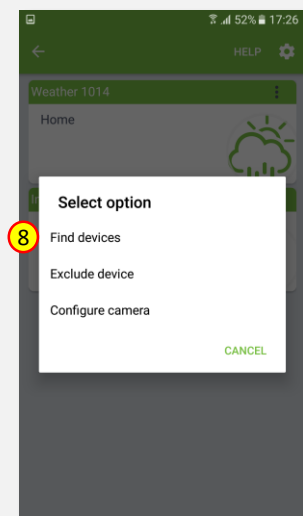


5. Read the instruction for adding Smart Plug 16A module.
6. After having read the instructions, click the arrow button (twice) to exit the instructions section.

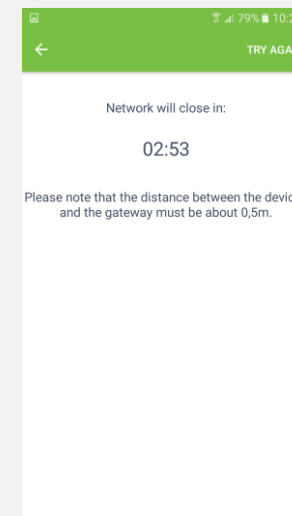
7. Click gear button on the top of the screen.



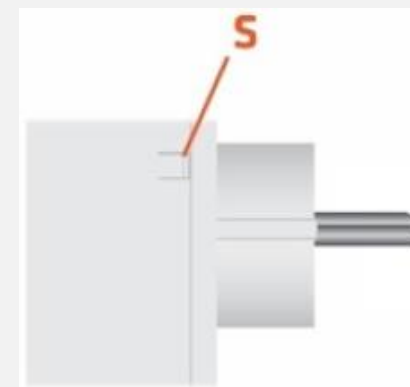
8. Select “Find devices” option.



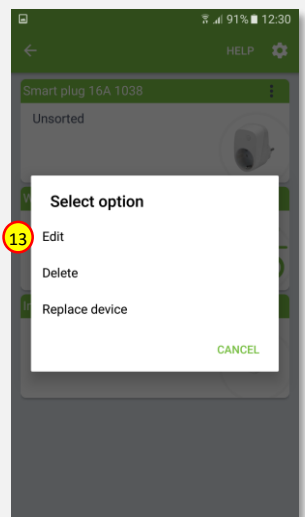
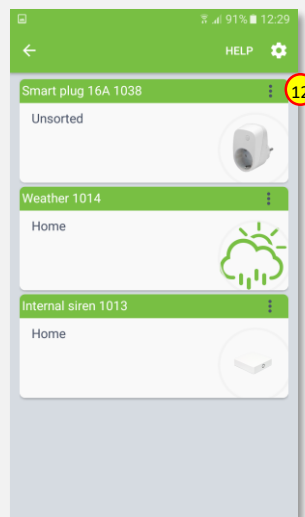
9. COCKPIT gateway will start “Add new devices mode”.



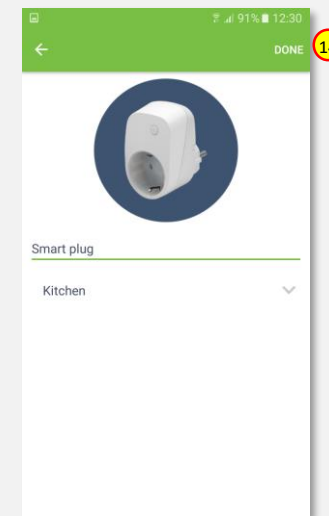
10. Connect Smart Plug 16A module to the power supply to start auto inclusion procedure or press and hold the Service button S between 2 and 6 seconds (if module was connected to power supply for more than 2 minutes before press “Find devices” button).



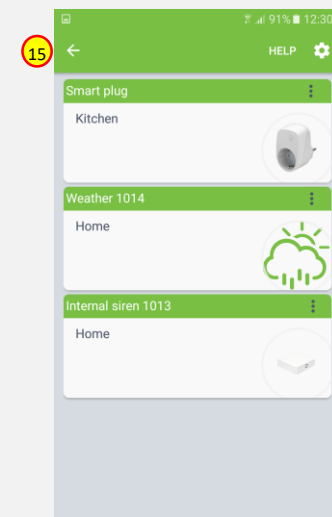
11. After adding process complete, the list of devices appears with Smart Plug 16A module present on it.
12. Click on “settings” icon located next to the Smart Plug 16A module name.
13. Select “Edit” option.



14. Name the device (e.g. Smart Plug) and select room (e.g. Kitchen) for the Smart Plug 16A module. When you are done, click “DONE” button.



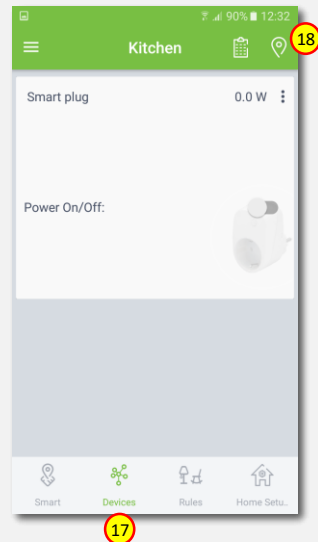
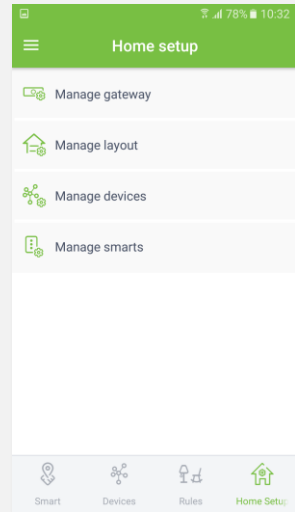
15. You will be directed back to the screen where you can see all added devices. Press arrow button to proceed.



16. Adding procedure for Smart Plug 16A module is now completed. You will be redirected to “Home Setup” screen.

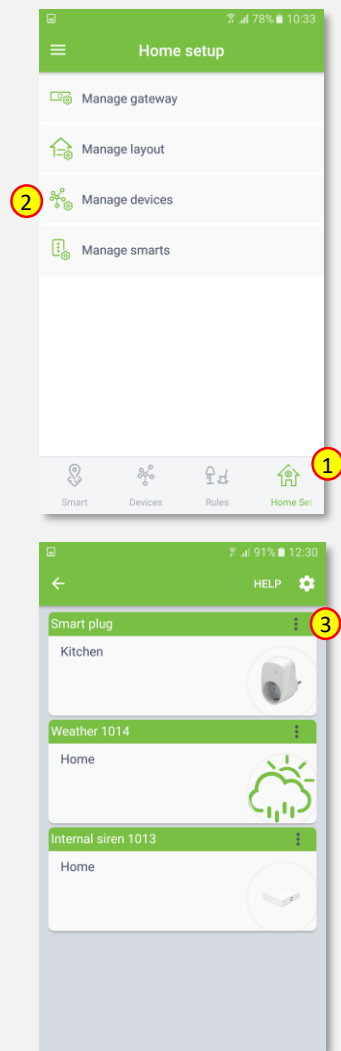
17. To locate newly added device, click “Devices” tab on the bottom of the screen.

18. If device is not shown on the list, choose the proper room by pressing „Device by location” button.

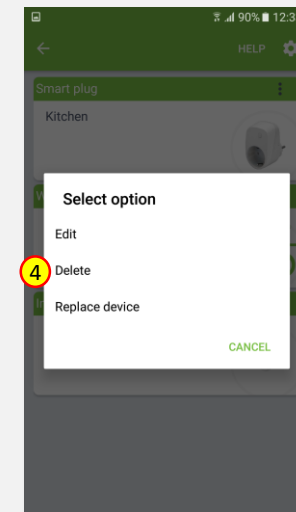


Removing Smart Plug 16A

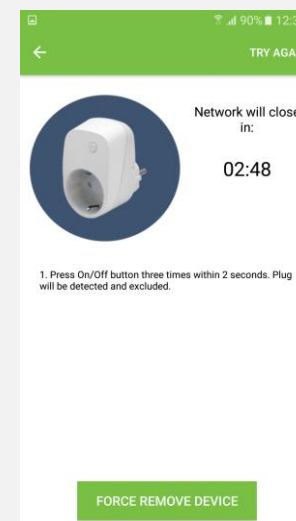
1. Click “Home Setup” tab located in the bottom of Cockpit@Home app.
2. Click „Manage devices” button.
3. Click on “settings” icon located next to the Smart Plug 16A module name.



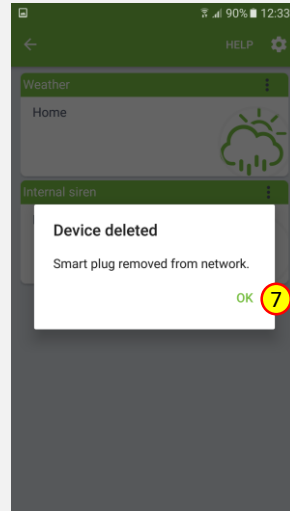
4. Select “Delete” option.



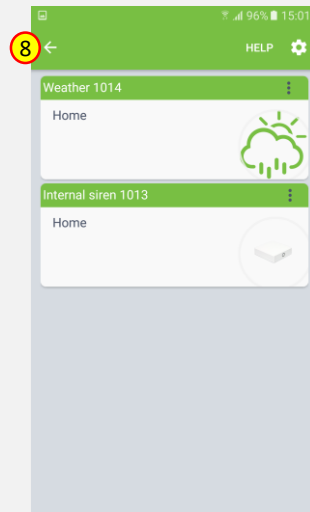
5. COCKPIT gateway will start “Exclude device mode”.
6. Connect the Smart Plug 16A module to the power supply and remove it from the system by pressing and holding the Service button S between 2 and 6 seconds.



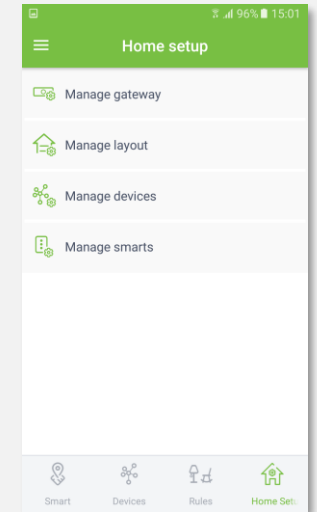
7. When the device / node have been removed, appropriate information will appear on the screen. Click “OK” button to finish the process.



8. You will be directed back to the screen with list of devices, where Smart Plug 16A module is not present anymore. Press arrow button to proceed.



9. Removing procedure for Smart Plug 16A module is now completed. You will be redirected to “Home Setup” screen.





COCKPIT Smart Home d.o.o. Nova Gorica
Ulica Klementa Juga 007
5250 Solkan
Slovenia

E-mail: support@yourcockpit.biz
Tel: +386 5 335 95 00
Fax: +386 5 300 61 43
Web: www.yourcockpit.biz