



Cockpit Shutter

Add/Remove User Manual

Before starting adding your module, please complete set up procedure for your COCKPIT gateway.

For more information about COCKPIT gateway set up procedure, please refer to the COCKPIT gateway User Manual.



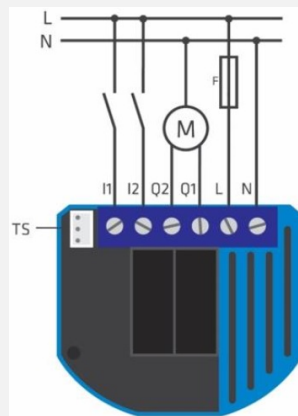
Type: Shutter
Ordering code: CKNHCD

Date: 16.03.2020
Document: COCKPIT_Shutter_Add.Rem_v2_eng

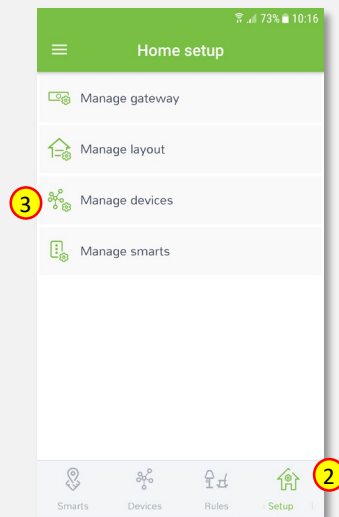
USER MANUAL **EN**

Adding Shutter

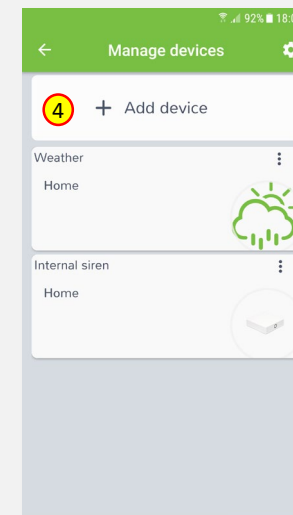
1. Turn off the mains and wire Shutter module as shown on the diagram. If you have purchased the temperature sensor, connect it to the TS connector (please refer to the Shutter user manual for more info).



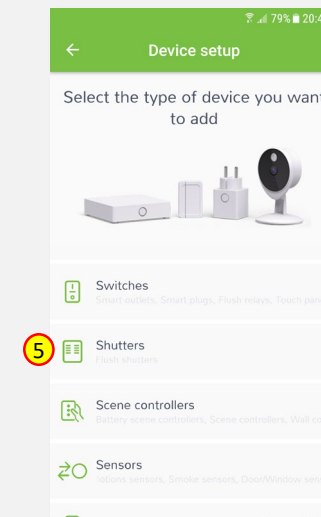
2. Click “Home Setup” tab located at the bottom of the Cockpit@Home app.
3. Click „Manage devices”.



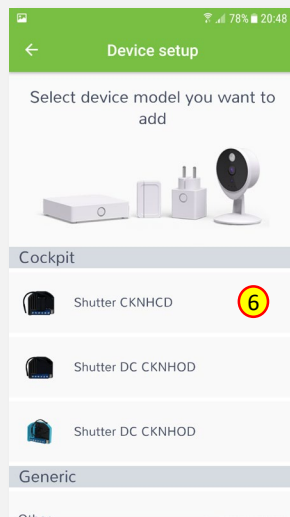
4. Click „+ Add device”.



5. Select „Shutters” from the list of available device types.



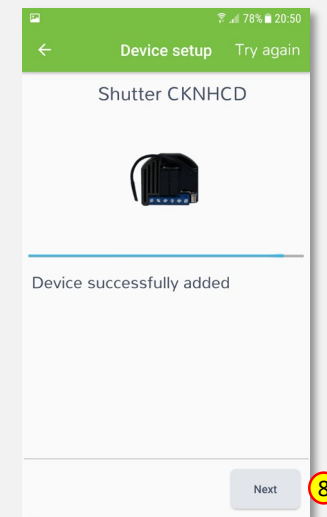
6. Select „Shutter”. COCKPIT gateway will open the network for inclusion.



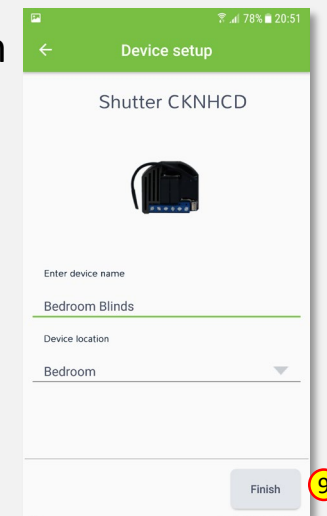
7. Read the instructions and choose one of the options available for adding for adding the Shutter module. In this manual the use of auto-inclusion feature is presented. Connect the module to the power supply to start the auto-inclusion.



8. After successfully adding the device, an appropriate message will be displayed. Press „Next” button to proceed.



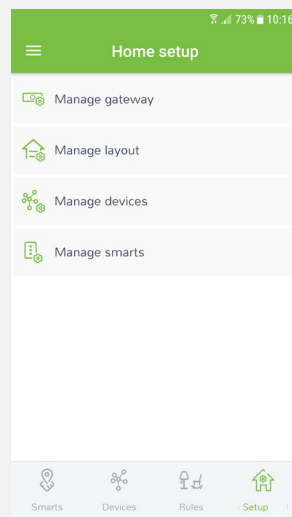
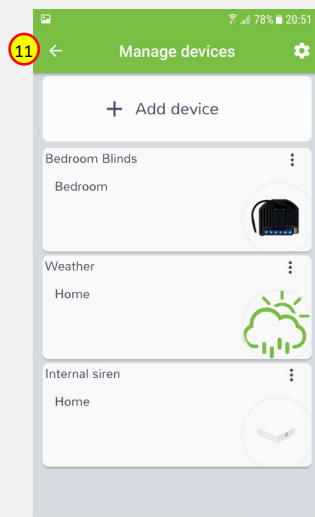
9. Name the device (e.g. Bedroom Blinds) and select the room (e.g. Bedroom) for the Shutter module. When you are done, click “Finish” button.



10. You will be directed to the screen with the list of all added devices, where the newly added Shutter module should be listed.

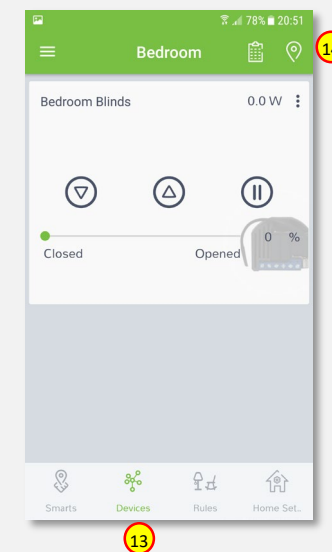
11. Press the arrow button to proceed.

12. The procedure of adding the Shutter module has been completed. You will be redirected to the “Home Setup” screen.



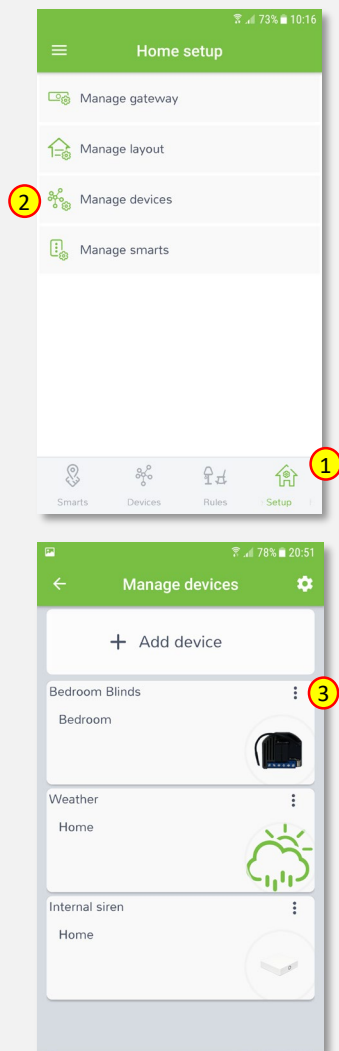
13. To locate newly added device, click “Devices” tab at the bottom of the screen.

14. If device is not shown on the list, choose the proper room by pressing „Device by location” button.

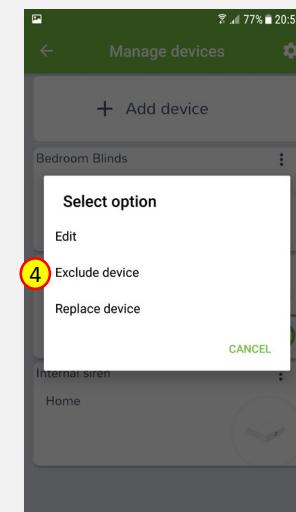


Removing Shutter

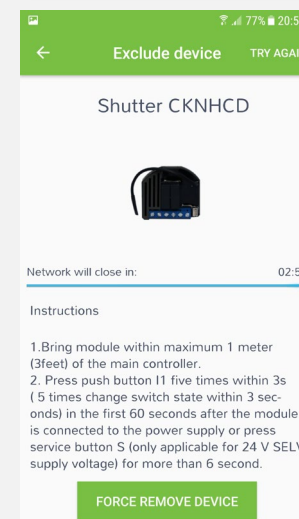
1. Click “Home Setup” tab located in the bottom of Cockpit@Home app.
2. Click „Manage devices” button.
3. Click on “settings” icon located next to the Shutter module name.



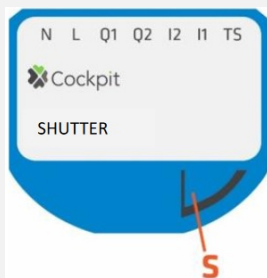
4. Select “Exclude device” option.



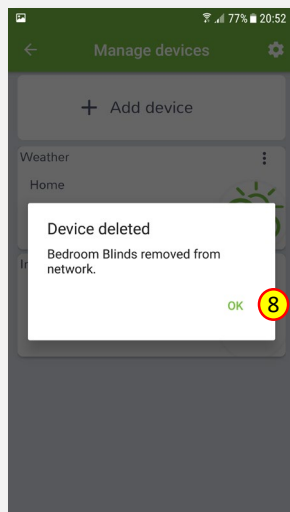
5. COCKPIT gateway will open the network for exclusion.
6. Read the instructions and choose one of the options available for removing the Shutter module.



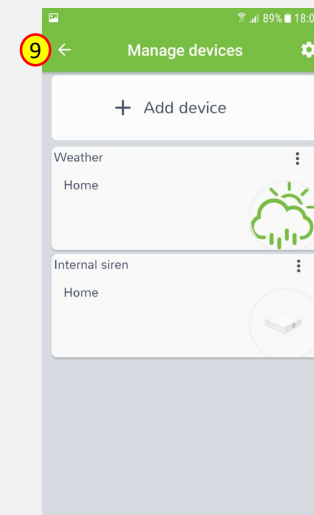
7. Remove the module by connecting it into the mains and pressing the Service button (S) for more than 6 seconds.



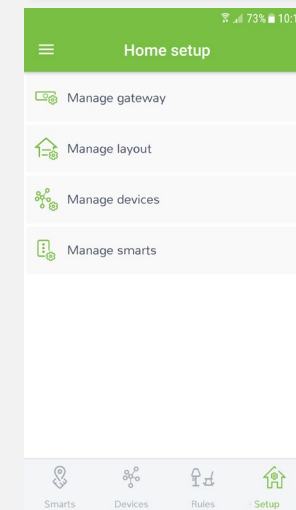
8. When the device / node have been removed, appropriate information will appear on the screen. Click “OK” button to finish the process.



9. You will be directed back to the screen with a list of devices on which the Shutter module is no longer present. Press the arrow button to proceed.



10. The procedure for removing the Shutter module is now complete. You will be directed to the “Home Setup” screen.





COCKPIT Smart Home d.o.o. Nova Gorica
Ulica Klementa Juga 007
5250 Solkan
Slovenia

E-mail: support@yourcockpit.biz
Tel: +386 5 335 95 00
Fax: +386 5 300 61 43
Web: www.yourcockpit.biz