



# Cockpit Door/Window Sensor Add/Remove User Manual

Before starting adding your module, please complete set up procedure for your COCKPIT gateway.

For more information about COCKPIT gateway set up procedure, please refer to the COCKPIT gateway User Manual.



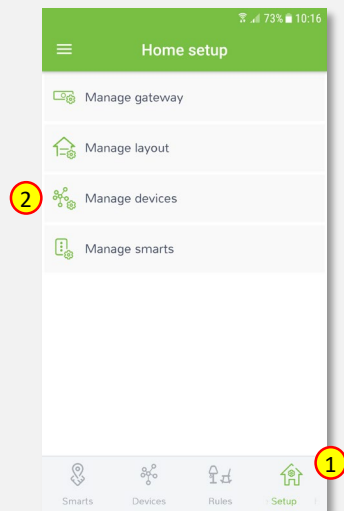
Type: Door/Window Sensor  
Ordering code: CKNPDD

Date: 23.03.2020  
Document: COCKPIT\_DIN\_Dimmer\_Add.Rem\_v2\_eng

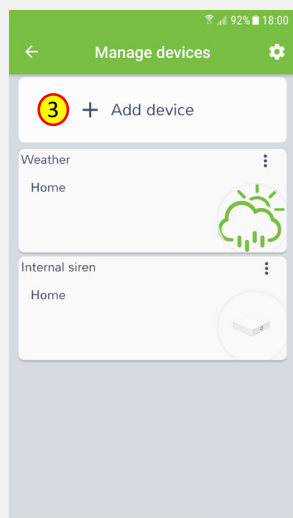
USER MANUAL **EN**

## Adding Door/Window Sensor

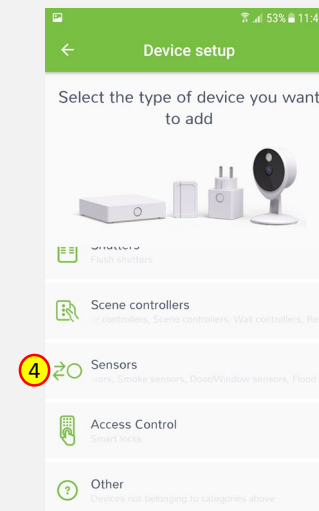
1. Click “Home Setup” tab located in the bottom of Cockpit@Home app.
2. Click „Manage devices”.



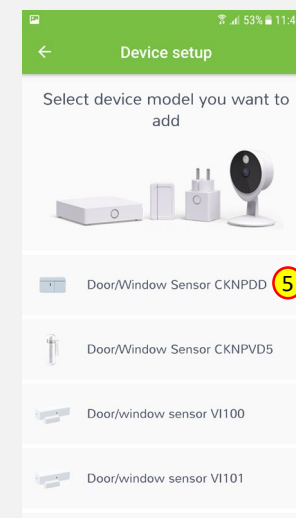
3. Click „+ Add device”.



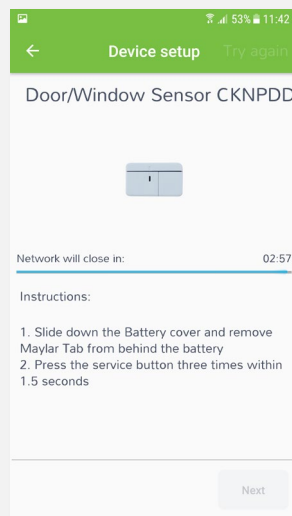
4. Select „Sensors” from the list of available device types.



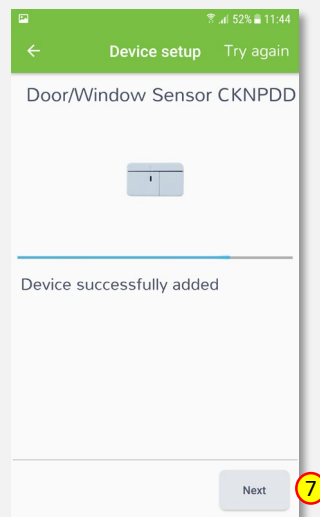
5. Select „Door/Window Sensor” . COCKPIT gateway will open the network for inclusion.



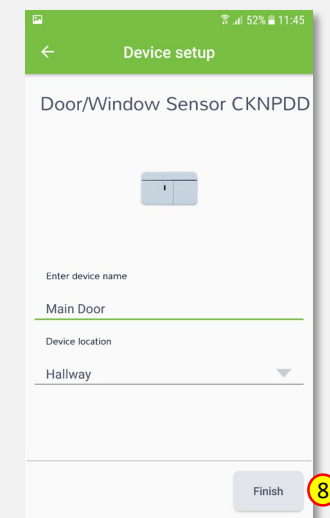
6. Add Door/Window Sensor module by pressing the Service button three times within 1,5 second (please refer to the Door/Window Sensor module user manual for more info).



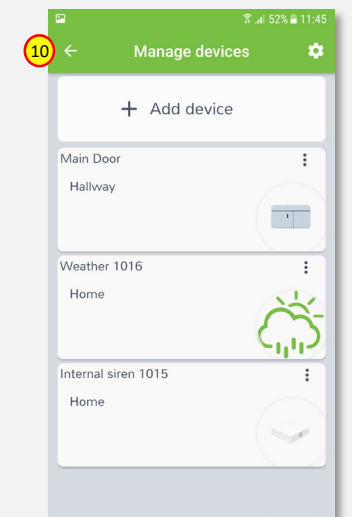
7. After successfully adding the device, an appropriate message will be displayed. Press „Next” button to proceed.



8. Name the device (e.g. Main Door) and select the room (e.g. Hallway) for the Door/Window Sensor module. When you are done, click “Finish” button.

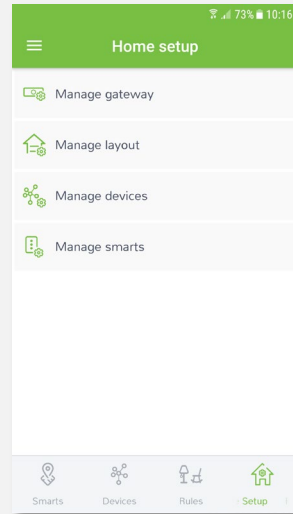


9. You will be directed to the screen with the list of all added devices, where the newly added Door/Window Sensor module should be listed.



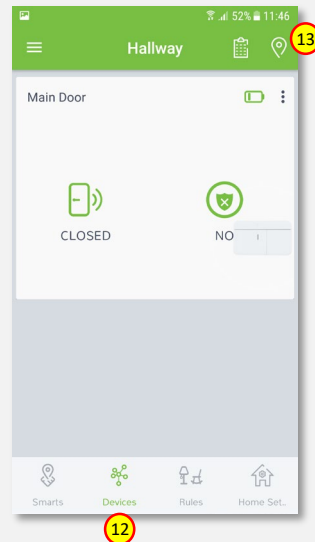
10. Press the arrow button to proceed.

11. The procedure of adding the Door/Window Sensor module has been completed. You will be redirected to the “Home Setup” screen.



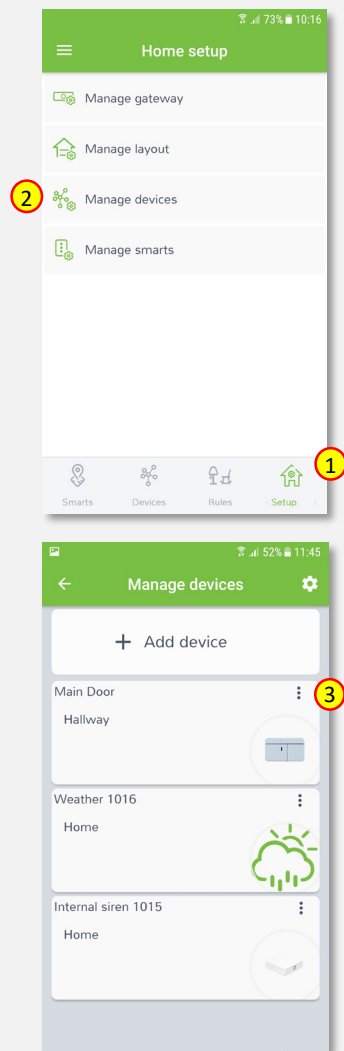
12. To locate newly added device, click “Devices” tab at the bottom of the screen.

13. If device is not shown on the list, choose the proper room by pressing „Device by location” button.

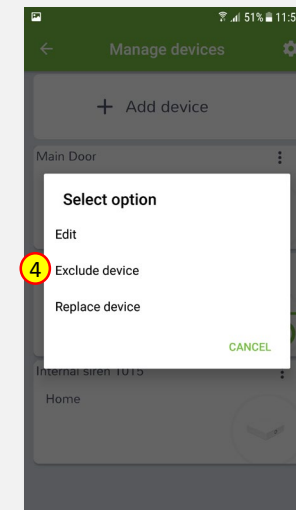


## Removing Door/Window Sensor

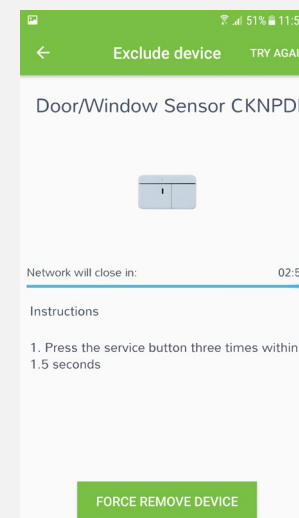
1. Click “Home Setup” tab located in the bottom of Cockpit@Home app.
2. Click „Manage devices” button.
3. Click on “settings” icon located next to the Door/Window Sensor module name.



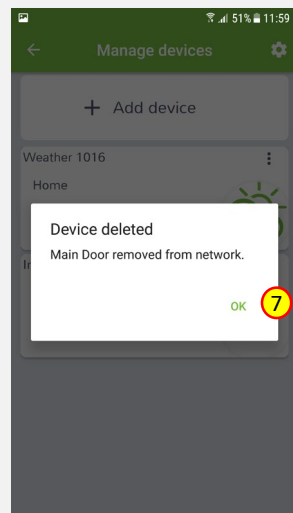
4. Select “Exclude device” option.



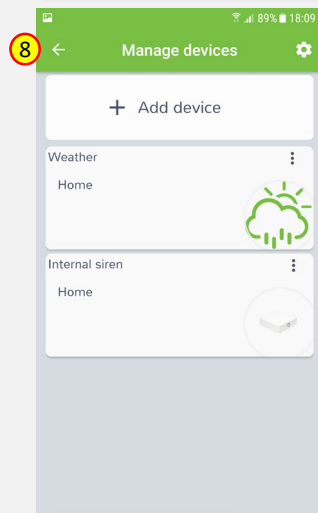
5. COCKPIT gateway will start “Exclude device mode”.
6. Remove Door/Window Sensor module by pressing Service button three times within 1.5 seconds (please refer to the Door/Window Sensor module user manual for more info).



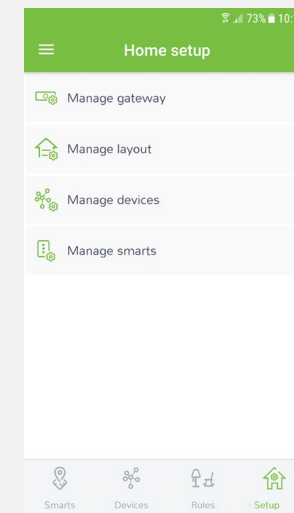
7. When the device / node have been removed, appropriate information will appear on the screen. Click “OK” button to finish the process.



8. You will be directed back to the screen with list of devices, where Door/Window Sensor module is not present anymore. Press arrow button to proceed.



9. The procedure for removing the Door/Window Sensor module is now complete. You will be directed to the “Home Setup” screen.





COCKPIT Smart Home d.o.o. Nova Gorica  
Ulica Klementa Juga 007  
5250 Solkan  
Slovenia

E-mail: [support@yourcockpit.biz](mailto:support@yourcockpit.biz)  
Tel: +386 5 335 95 00  
Fax: +386 5 300 61 43  
Web: [www.yourcockpit.biz](http://www.yourcockpit.biz)