



Cockpit A/C Control

Add/Remove User Manual

Before starting adding your module, please complete set up procedure for your COCKPIT gateway.

For more information about COCKPIT gateway set up procedure, please refer to the COCKPIT gateway User Manual.



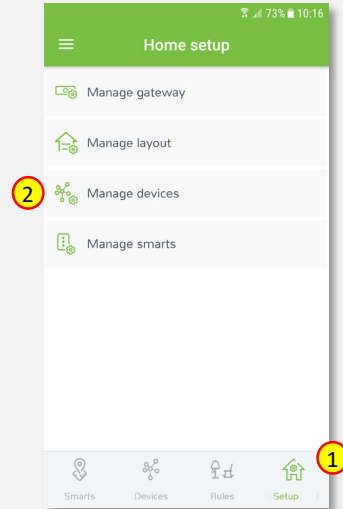
Type: A/C Control
Ordering code: CKNPCD

Date: 18.03.2020
Document: COCKPIT_AC_Control_Add.Rem_v2_eng

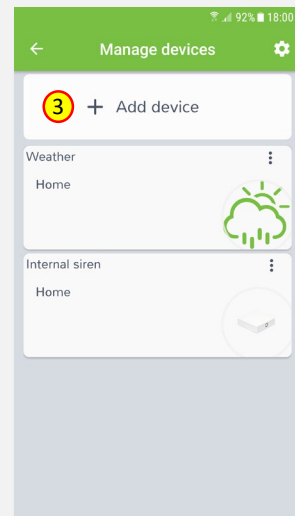
USER MANUAL **EN**

Adding A/C Control

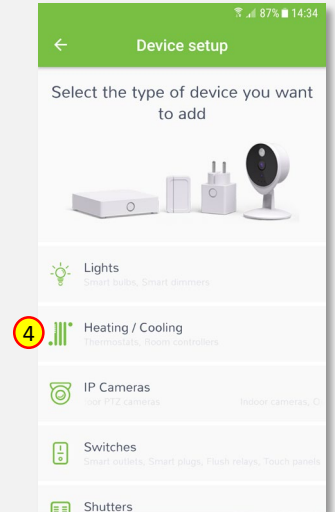
1. Click “Home Setup” tab located in the bottom of Cockpit@Home app.
2. Click „Manage devices”.



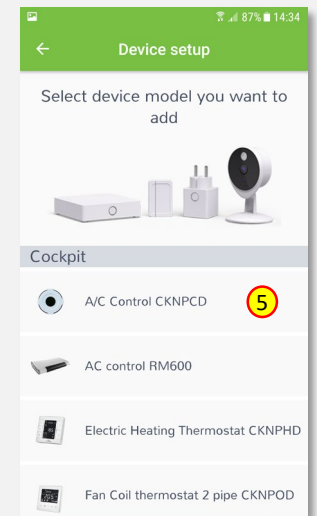
3. Click „+ Add device”.



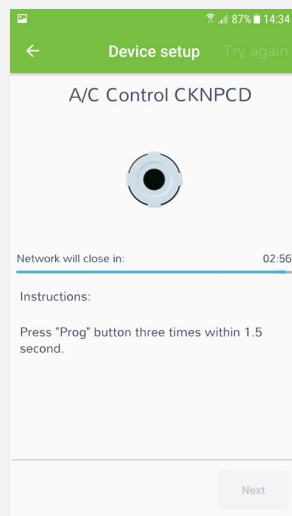
4. Select „Heating / Cooling” from the list of available device types.



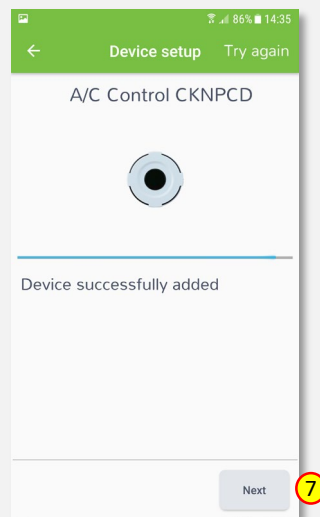
5. Select „A/C Control”.
COCKPIT gateway will open the network for inclusion.



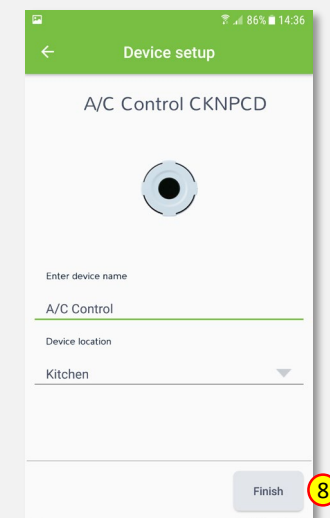
6. Add A/C Control module by pressing once the “PROG” button (“PROG” button is located on the top of the module, please refer to the A/C Control module user manual for more info).



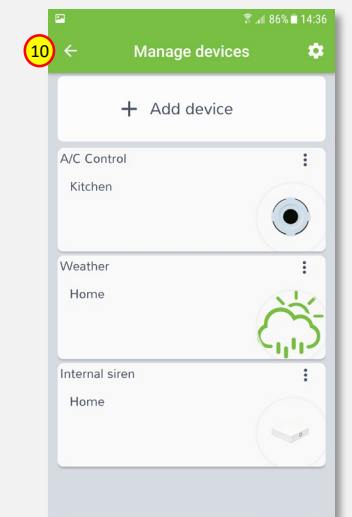
7. After successfully adding the device, an appropriate message will be displayed. Press „Next” button to proceed.



8. Name the device (e.g. A/C Control) and select the room (e.g. Kitchen) for the A/C Control module. When you are done, click “Finish” button.

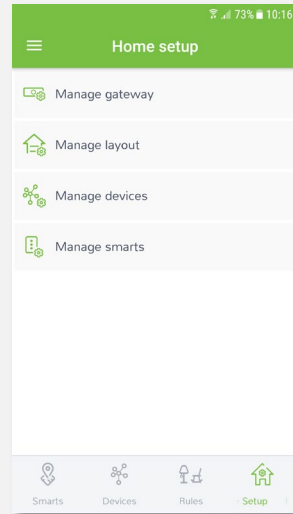


9. You will be directed to the screen with the list of all added devices, where the newly added A/C Control module should be listed.

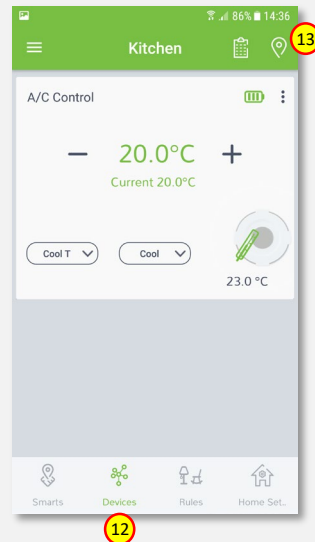


10. Press the arrow button to proceed.

11. The procedure of adding the A/C Control module has been completed. You will be redirected to the “Home Setup” screen.



12. To locate newly added device, click “Devices” tab at the bottom of the screen.

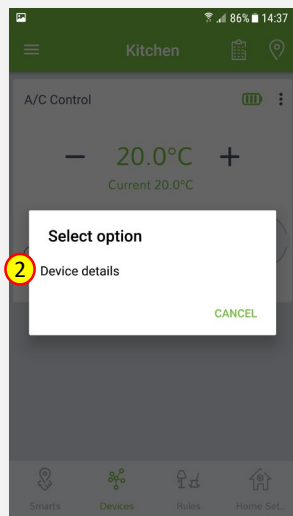
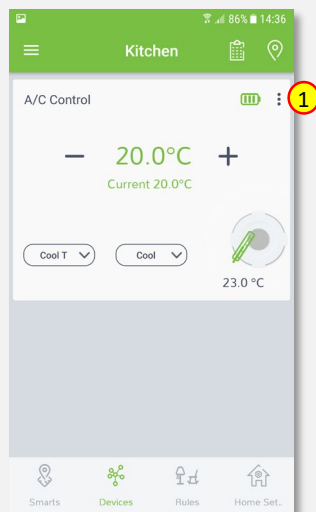


13. If device is not shown on the list, choose the proper room by pressing „Device by location” button.

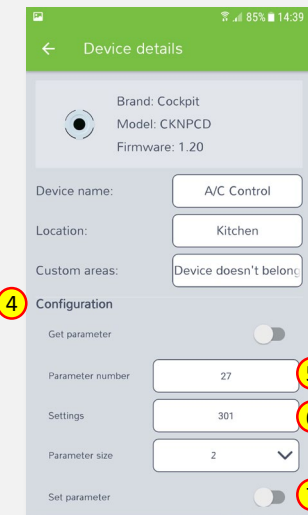
Setting IR Codeset

Each type of air conditioner has integrated its own IR code for remote control. Related IR code should be set also on A/C Control module in order to control air conditioner with the module. To set the code:

1. Click on “settings” icon next to the battery indicator of A/C Control module.
2. Press “Device details” option.

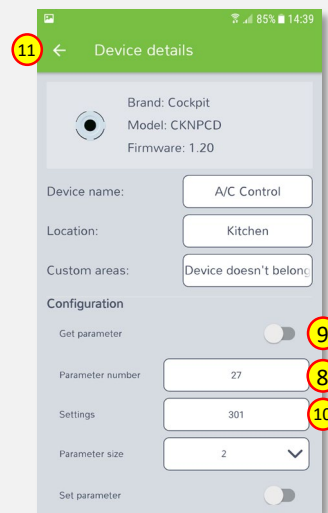


3. It opens “Device details” window for different parameters.
4. Scroll down to the “Configuration” section. Codeset number should be set, this is defined by parameter 27.
5. Type in 27 in the „Parameter number” field.
6. Type in the desired „Codeset” in the „Settings” field (e.g. 301 for Samsung).
7. Click on the „Set parameter” button.



To check if right code was assigned to A/C Control module, you can use „Get parameter” button:

8. Make sure, that “Parameter number” is set to 27.
9. Click on “Get parameter” button.
10. Codeset in “Settings” should be the same like set in the previous steps (e.g. 301 for Samsung).
11. To exit „Device details”, click arrow button.



Tested Codeset libraries:

Air conditioner producer	Air conditioner model	Air conditioner remote	Codeset
Mitsubishi	MSZ-GE35VA / MUZ-GE35VA	KM09A	238
Mitsubishi HI	SRK	RKX502A001C	184
Mitsubishi	SLZ		35
Hitachi	WX8, FH6/7, SX8, FX8		120
Toshiba	RAS-10GKHP-ES32		222
Toshiba	RAZ-107	WH-UA01NE 201306	182
Toshiba	RAV		181, 177
Panasonic	CU-E12CKP5	A75C2295	95, 64,
Panasonic	Models 2004 and newer		191
Gorenje	All types		46
Galanz			4
Vivax			4
Midea			46, 55
Daikin	FTXS	ARC466A6	313
Fujitsu			201
Neo		ZH/JT-03	186
Chigo			42
Vaillant			46, 48
Ferolli			69
Ecocold	KFR-70GW		4, 42

All Codeset libraries:

Air conditioner producer	Codeset									
ACURA	94									
AIKIRA	174									
AIRCON	42	57	58							
AIRWELL	276	432								
AMERICOOOL	430									
APTON	67									
ARIAGEL	13									
AUCMA	413	414								
AUX	189	407	21	190	398	399				
AZURE	424									
BEAVER	184									
CARRIER	108	109	112	88	96	97	98	99	100	101
	102	103	104	105	106	107	110	111	396	397
	431									
CHANG HONG	178	179	180	5	121	122	123	124	125	126
	127	134	135	136	148					
CHIGO	186	42	57	58						
CHUANHUA	37	113								
CHUNLAN	19	150	151							
CLASSIC	46									
COMFORTSTAR	35	78								
CONROWA	37	70	113							
COOLWEX	18	428								
CORONA	288									
DAEWOO	70									

DAIKIN	1	6	26	313	321	324	367	2	11	29
	30	31	32	33	50	162	163	211	261	264
	265	266	267	268	269	270	289	290	325	366
DELONGHI	13	46	91							
ELCO	432									
ELECTRA	432	433								
ELECTROLUX	55	295	297							
ELSONIC	81									
FEDDERS	276									
FRIGIDAIRE	273	274	275							
FUJITSU	16	199	200	201	202	25	27	34	158	159
	160	161	203	204	205	206	227			
GALANZ	4	70	83	86	277	381				
GENERAL	25	27	34	57						
GENERAL (FUJITSU)	16									
GORENJE	46	55								
GREE	18	69	292	376	429	15	154	155	195	
GUANGDA	20	37	113							
GUQIAO	4									
HAIER	76	210	256	23	75	77	156	172	197	198
	207	208	209	257						
HERAN	421									
HISENSE	68	80	9	10	382	427				
HITACHI	52	53	120	227	258	259	260	291	298	299
	39	50	51	255	262	263	375	436		

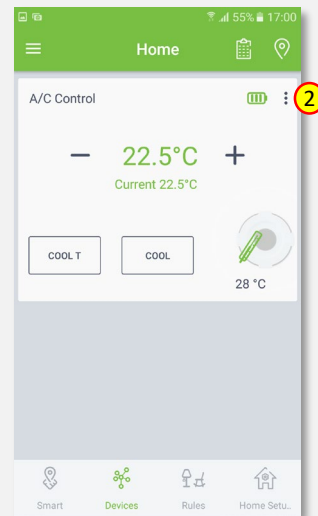
HUALING	37	56	70	193						
HUIFENG	113									
INYCIN	70									
KANG LI	43									
KELON	411	12	13	14	143					
KELVINATOR	46	87								
KOLIN	44									
KOMEKO	46	88								
KONKA	42	70								
LENNOX	15	18	69							
LG	17	81	82	91	294					
LLOYD	186									
MCQUAY	196									
MIDEA	46	40	54	55	78	79	113			
MIDEA_TOSHIBA	48									
MILLER	40	42	46	54	55	57	58			
MIRAGE	15	18	69							
MITSUBISHI	194	232	233	42	113	244	245	246	247	248
	249	278	279	280	281	282	283	284	285	286
	287	302	303	304	305	307	314	320		
MITSUBISHI ELECTRIC	4	176	228	229	230	231	233	234	235	236
	237	238	239	240	315	326	392	35	37	57
	70	93	153	287						
MITSUBISHI (HEAVY INDUSTRIES)	20	36	42	184	243	250	38	113	114	115
	116	117	118	119	131	132	133	164	165	251
	252	253	254	278	306	316	317	319	322	
NATIONAL	369	402	211							

NEC	127	128	129	130	135	136	137	138	139	140
	141	142	146	147	148	152	166	167	168	169
	170									
NEO	186									
PANASONIC	64	95	183	191	323	368	47	61	62	63
	65	92	185	241	242	365	378	379	437	293
	28									
PANDA	28									
PHILCO	41									
RASONIC	394									
SAMPO	422									
SAMSUNG	73	74	84	425	49	149	171	300	301	438
	45	59	60	127	128	129	130	134	135	136
	137	138	139	140	141	142	146	147	148	152
SANYO	166	167	168	169	170	187	218			
	42									
	70									
SCHNEIDER ELECTRIC	70									
SHANGLING	70									
SHARP	90	318	426	7	8	66	143	144	145	157
	192	193	212	213	214	215	216	217		
	22	85								
SHINCO	22	85								
SHINING	70									
SIEMENS	46									
SPRINGER	88									
SUPER GENERAL	57									
SURREY	55									
TADIRAN	40	46	48	54						
TCL	24	380	434							
TECO	423									
TONAL	188									
TORNADO	40	46	48							
TOSHIBA	182	56	71	175	177	181	186	219	220	221
	222	223	224	225	226					
	42									
TOYO COOL	42									
TRANE	69	3	173	174						
VIDEOCON	186									
VOLTAS	4	377	46							
WESTPOINT	88									
WHIRLPOOL	13	211	271	272						
WHITE-WESTINGHOUSE	395									
XILENG	150									
YORK	18	15	55	89	296					
YUTU	70									

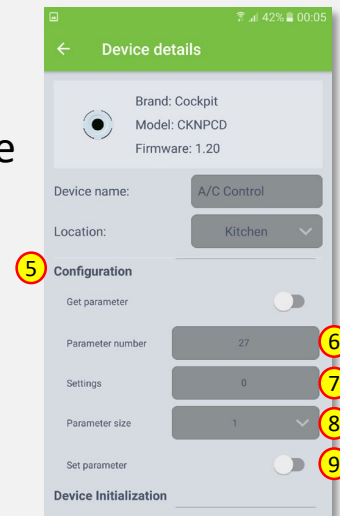
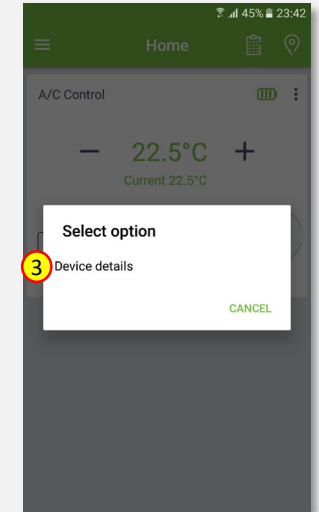
A/C Control module learning mode

A/C control module has beside already integrated Codesets library, which are valid for specific models of air conditions, a table that can be programmed. This means that user can set A/C control module to use original remote controller IR codes (commands). Programming procedure should be done for each IR code separately, so it is necessary to perform below described procedure for each IR code separately.

1. Add A/C Control module to the COCKPIT gateway (follow chapter: Adding the A/C control module up to item 14).
2. Click on “settings” icon next to the battery indicator of A/C control module.



3. Press “Device details” option.
4. It opens “Device details” window for different parameters.
5. Scroll down to the “Configuration” section.
6. Type 27 in the „Parameter number” field.
7. Type 0 in the „Settings” field (value 0 sets A/C Control module to “learning mode”).
8. Set „Parameter size” to 1.
9. Click on the „Set parameter” button.



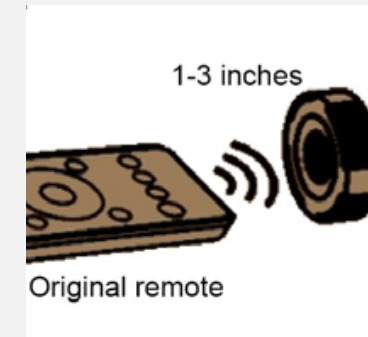
The following table contains the list of IR codes which A/C control module can learn. For each IR code (temperature values and Off command) from below table, learning procedure should be done separately. The learning procedure is equal for all IR codes. For each IR code to be learned, user should set related value (see parameter value column in the table).

IR Learning Mapping Table (Parameter number 25)

Parameter Value (Location)	Thermostat command & IR setting	
0	OFF	
1	ON (resume)	
2	19°C cool	
3	20°C cool	
4	21°C cool	
5	22°C cool	
6	23°C cool	
7	24°C cool	
8	25°C cool	
9	26°C cool	Default Cool
10	27°C cool	
11	28°C cool	
12	19°C heat	
13	20°C heat	
14	21°C heat	
15	22°C heat	Default Heat
16	23°C heat	
17	24°C heat	
18	25°C heat	
19	26°C heat	
20	27°C heat	
21	28°C heat	
22	Dry mode	

Following is described example how to program “Off” command (parameter „Value” set to 0, see above table):

10. Set A/C control module and original remote control to the position shown in the picture.

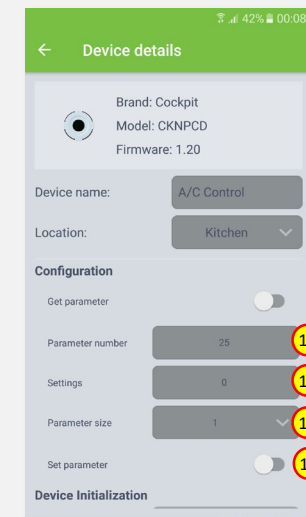


11. Type 25 in the „Parameter number” field.

12. Set „Parameter size” to 1.

13. Type 0 in the „Settings” field.

14. Click on the „Set parameter” button.



A/C control module will now go and stay in learning mode for limited period. During this time A/C control module is waiting to receive IR code to be learned. User should also pay attention to A/C control module red LED light status (positioned in the center of front red plastic cover of the module). LED blinking frequency has following meanings:

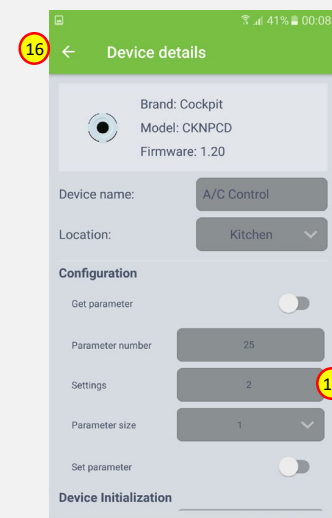
- Single blink: A/C control module is waiting for IR code from remote controller – after “Single blink” user should activate learned command from remote control unit towards A/C control module in the distance of about 1-3 cm. Available time for this action is about 10 sec!
- Double blink: A/C control module successfully adopted IR code .
- Six times blink: A/C control module did not adopt IR code successfully (error reading).

In practice, learning proces works according to following sequence:

- Activation of “Set parameter” button.
- LED single blink: point the remote control towards A/C control module and activate Off command.
- LED double blink: A/C control module successfully accepted code from remote control or
- LED blinks six times: A/C control did not adopt IR code (error reading), repeat the procedure.

15. To learn next value, repeat steps before item 15, changing „Settings” field to value which is valid for IR code you wish to learn (according to the „IR Learning Mapping Table”).

16. When all needed codes are learned, press arrow button to close „Advanced menu”.

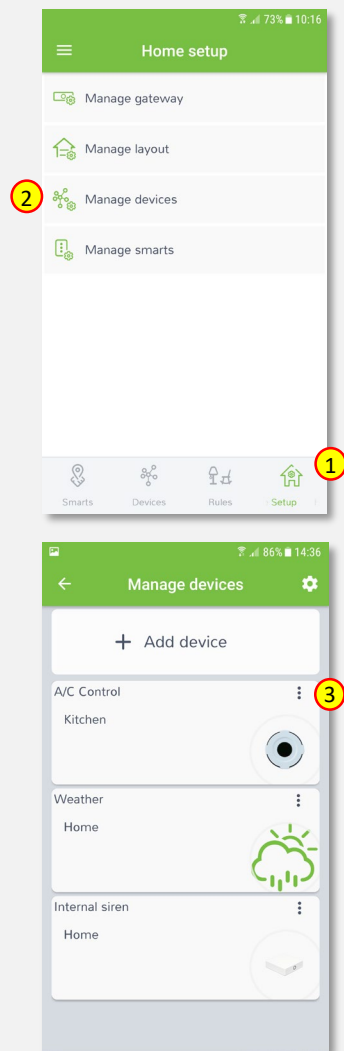


Learning tips:

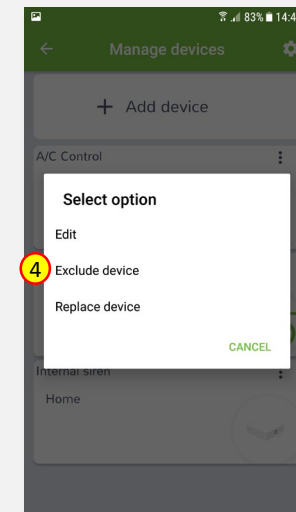
- Before sending the code to AC Control module, set your original air conditioner remote at e.g. "22°C, cool" and turn it off. (Besides temperature and mode, you may set other desired settings, such as Fan, Swing etc.).
- When A/C Control module is ready (LED single blink in learning mode), Press "On" button on remote control.
- Temperature set points for cooling and heating are separated. Before sending set point value towards A/C Control module, remote controller should be set to the right mode (e.g. while learning cooling set point values, remote control unit should be set to cooling mode).

Removing A/C Control

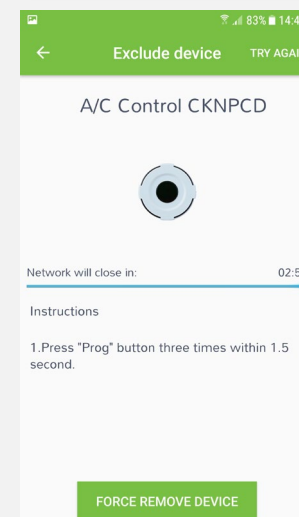
1. Click “Home Setup” tab located in the bottom of Cockpit@Home app.
2. Click „Manage devices” button.
3. Click on “settings” icon located next to the A/C Control module name.



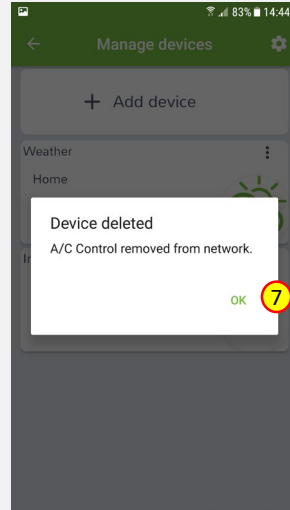
4. Select “Exclude device” option.



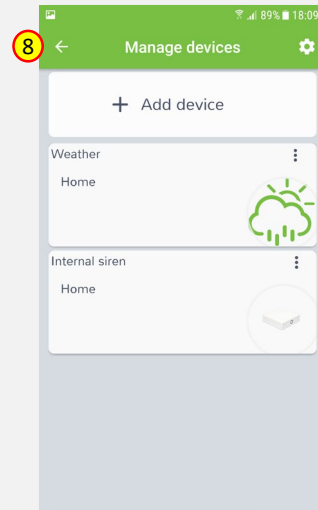
5. COCKPIT gateway will start “Exclude device mode”.
6. Remove A/C Control module by pressing once the “PROG” button (“PROG” button is located on the top of the module, please refer to the A/C Control module user manual for more info).



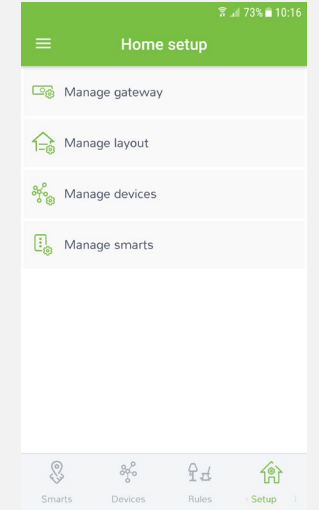
7. When the device / node have been removed, appropriate information will appear on the screen. Click “OK” button to finish the process.



8. You will be directed back to the screen with list of devices, where A/C Control module is not present anymore. Press arrow button to proceed.



9. The procedure for removing the A/C Control module is now complete. You will be directed to the “Home Setup” screen.





COCKPIT Smart Home d.o.o. Nova Gorica
Ulica Klementa Juga 007
5250 Solkan
Slovenia

E-mail: support@yourcockpit.biz
Tel: +386 5 335 95 00
Fax: +386 5 300 61 43
Web: www.yourcockpit.biz