



Cockpit 1-Phase Smart Meter Add/Remove User Manual

Before starting adding your module, please complete set up procedure for your COCKPIT gateway.

For more information about COCKPIT gateway set up procedure, please refer to the COCKPIT gateway User Manual.



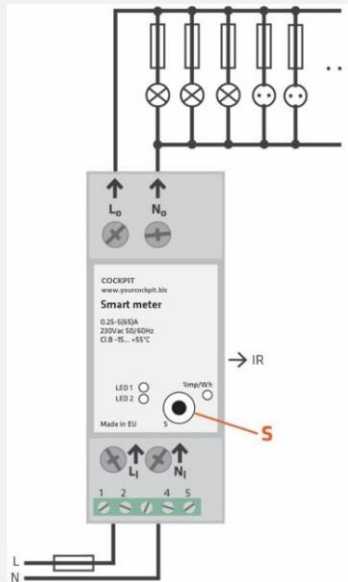
Type: 1-Phase Smart Meter
Ordering code: CKNHTD

Date: 17.03.2020
Document: COCKPIT_1-Phase Smart Meter_Add.Rem_v2_eng

USER MANUAL **EN**

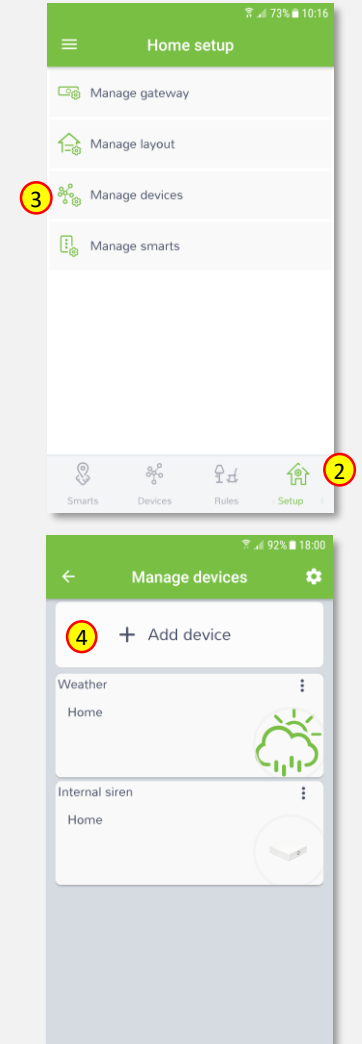
Adding Smart Meter

1. Turn off the mains and wire Smart Meter module as shown on the diagram.

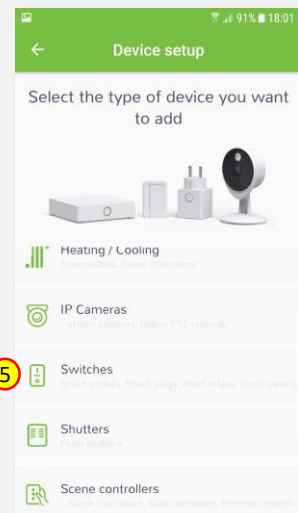


2. Click “Home Setup” tab located at the bottom of the Cockpit@Home app.
3. Click „Manage devices”.

4. Click „+ Add device”.



5. Select „Switches” from the list of available device types.



6. Select „1-Phase Smart Meter”. COCKPIT gateway will open the network for inclusion.



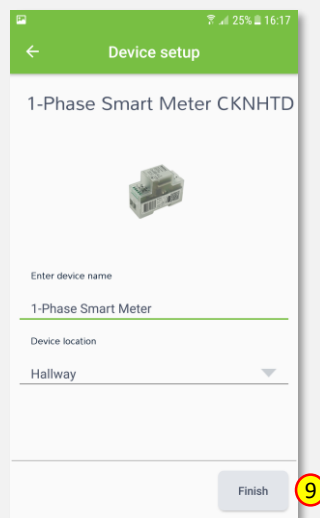
7. Read the instructions and choose one of the options available for adding for adding the Smart Meter module. In this manual the use of auto-inclusion feature is presented. Connect the module to the power supply to start the auto-inclusion.



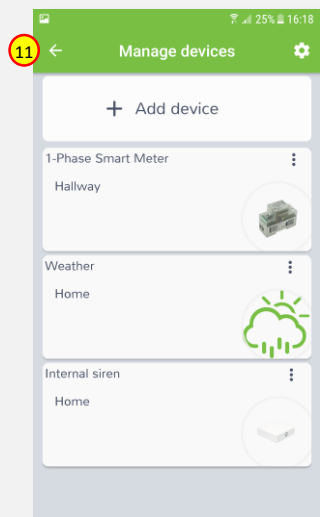
8. After successfully adding the device, an appropriate message will be displayed. Press „Next” button to proceed.



9. Name the device (e.g. 1-Phase Smart Meter) and select the room (e.g. Hallway) for the Smart Meter module. When you are done, click “Finish” button.

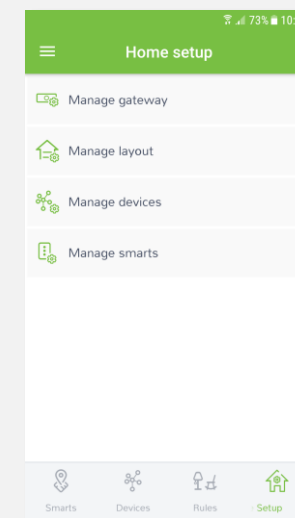


10. You will be directed to the screen with the list of all added devices, where the newly added Smart Meter module should be listed.

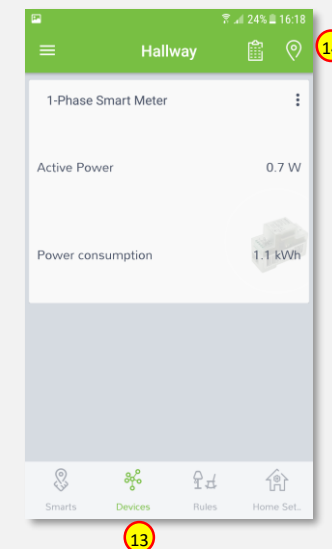


11. Press the arrow button to proceed.

12. The procedure of adding the Smart Meter module has been completed. You will be redirected to the “Home Setup” screen.



13. To locate newly added device, click “Devices” tab at the bottom of the screen.

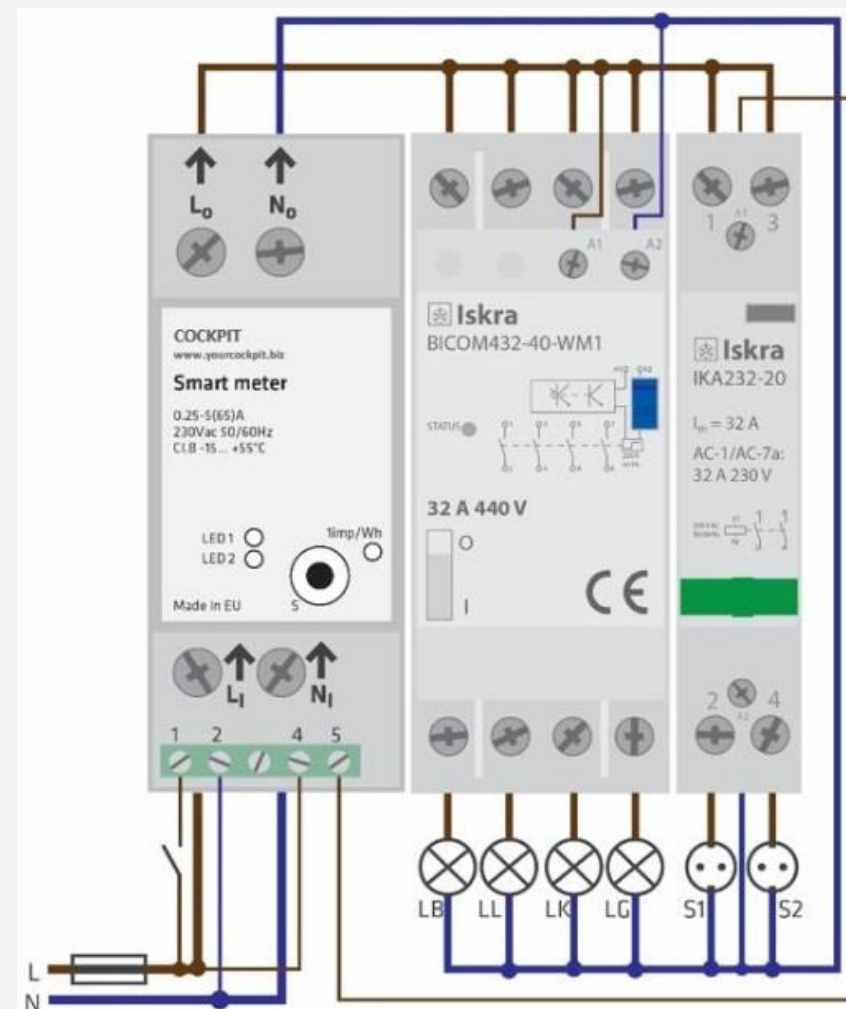


14. If device is not shown on the list, choose the proper room by pressing „Device by location” button.

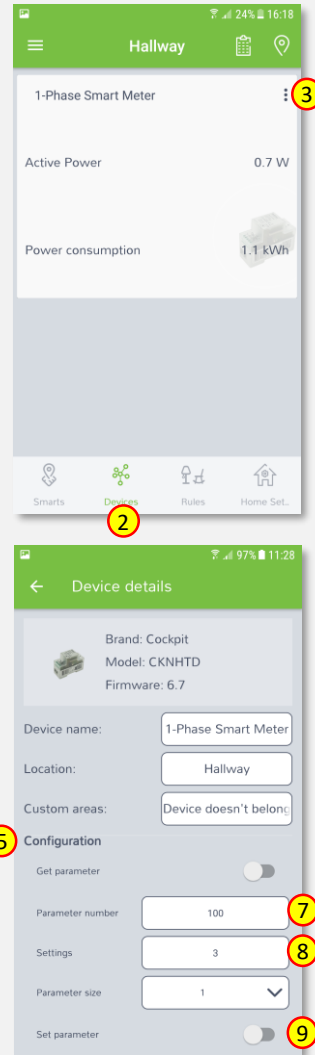
Adding external relays

The Cockpit 1-Phase Smart Meter is the only single phase smart meter worldwide which allows connection of additional two contactors - IKA/BICOM (IKA and BICOM are sold separately - for more info, please see Cockpit catalogue). Use of IKA/BICOM allows to control (turn On/Off) external circuits like e.g. lights, electrical heating, heat pumps etc. In order to install and activate IKA and BICOM, please go through the following steps.

1. Wire the IKA and BICOM modules as shown on the example diagram.
Please note that wiring can vary depending on the specific use-case. For more use-cases and wiring diagrams, please refer to 1-Phase Smart Meter extended user manual.



2. Connect Smart Meter module to the power supply and locate device in the Cockpit@Home app by clicking “Devices” tab on the bottom of the screen.
3. Click on “settings” icon of the Smart Meter module.
4. It opens “Device details” window for different parameters.
5. Scroll down to the “Configuration” section.
6. To activate IKA and BICOM, parameter 100 has to be set.



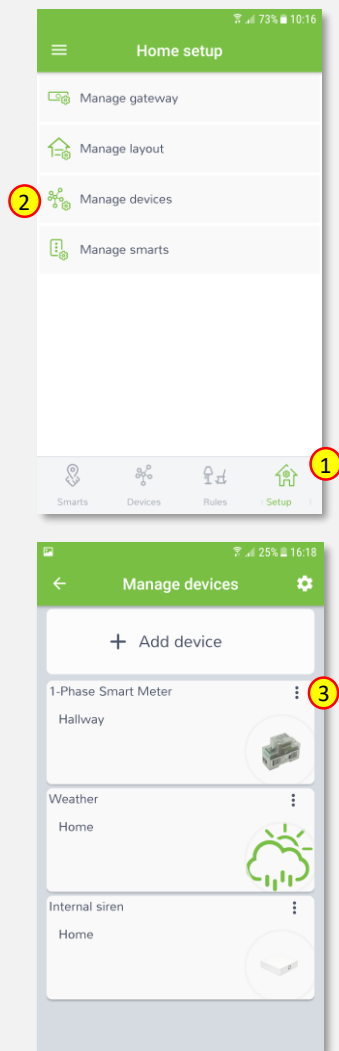
7. Type in 100 in the „Parameter number” field.
8. Type in the „1” (to activate IKA), „2” (to activate BICOM) or „3” (to activate IKA and BICOM) in the „Settings” field.
9. Click on the „Set parameter” button.
10. After parameters change, to make IKA and BICOME active, Smart Meter module has to be excluded from the gateway (without resetting to factory settings) and then re included again (please refer to “Removing Smart Meter” and “Adding Smart Meter” sections of this manual for detailed exclusion/inclusion procedure).

11. When the re-inclusion process is finished, locate Smart Meter module by clicking “Devices” tab on the bottom of the screen of Cockpit@Home app.
12. In this example, both relays (IKA and BICOM) were installed - two outputs are available.

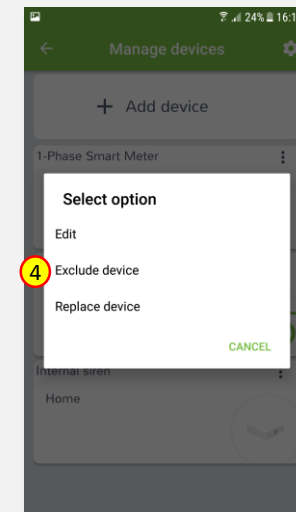


Removing Smart Meter

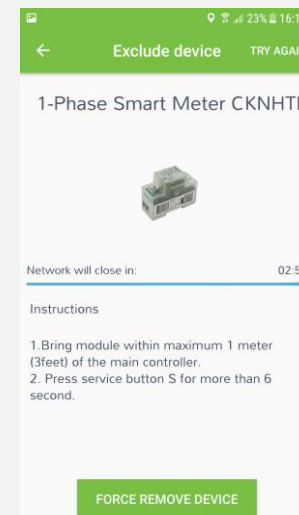
1. Click “Home Setup” tab located in the bottom of Cockpit@Home app.
2. Click „Manage devices” button.
3. Click on “settings” icon located next to the Smart Meter module name.



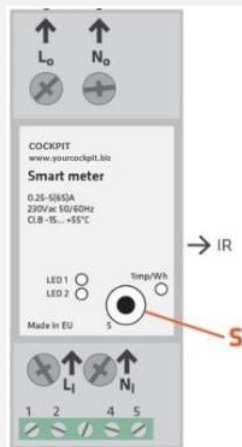
4. Select “Exclude device” option.



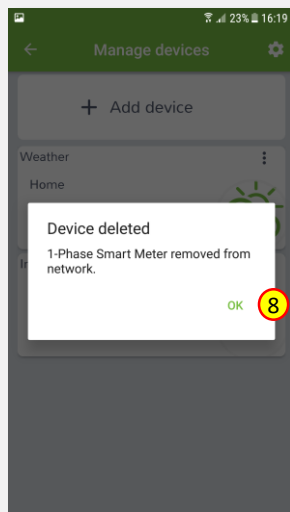
5. COCKPIT gateway will open the network for exclusion.
6. Read the instructions and choose one of the options available for removing the Smart Meter module.



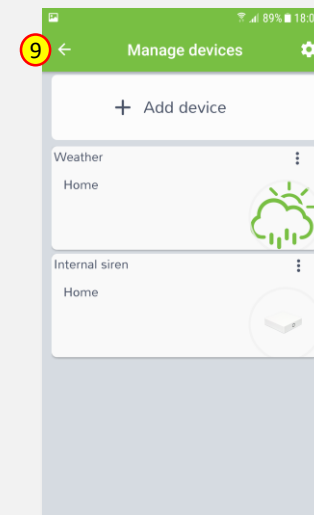
7. Remove the module by connecting it into the mains and pressing the Service button (S) for more than 6 seconds.



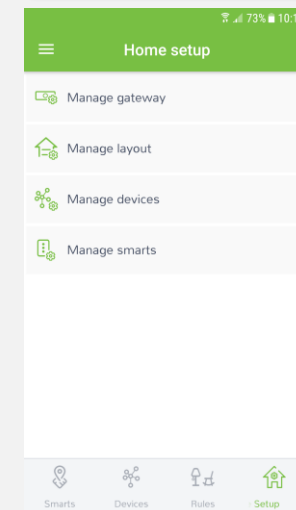
8. When the device / node have been removed, appropriate information will appear on the screen. Click “OK” button to finish the process.



9. You will be directed back to the screen with a list of devices on which the Smart Meter module is no longer present. Press the arrow button to proceed.



10. The procedure for removing the Smart Meter module is now complete. You will be directed to the “Home Setup” screen.





COCKPIT Smart Home d.o.o. Nova Gorica
Ulica Klementa Juga 007
5250 Solkan
Slovenia

E-mail: support@yourcockpit.biz
Tel: +386 5 335 95 00
Fax: +386 5 300 61 43
Web: www.yourcockpit.biz