



# Cockpit Camera

## Add/Remove User Manual

Before starting adding your module, please complete set up procedure for your COCKPIT gateway.

For more information about COCKPIT gateway set up procedure, please refer to the COCKPIT gateway User Manual.



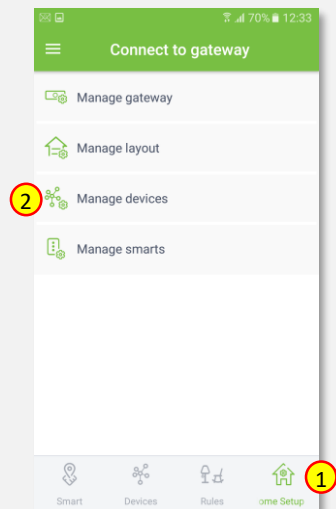
Type: Camera  
Ordering code: CKNOLIN

Date: 05.04.2019  
Document: COCKPIT\_Camera\_Indoor\_Add.Rem\_v1\_eng

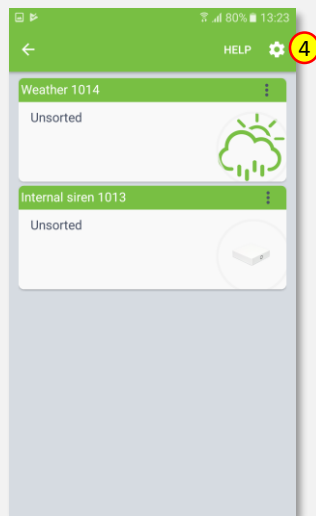
USER MANUAL **EN**

## Adding Camera

1. Click “Home Setup” tab located in the bottom of Cockpit@Home app.
2. Click „Manage devices”.

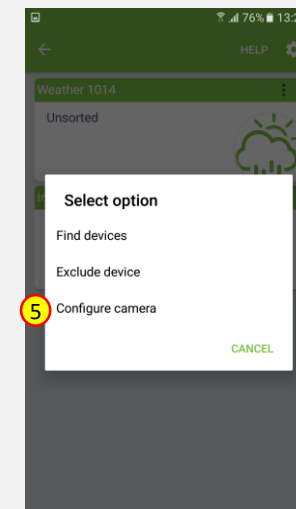


3. For LAN connection, connect camera to the router using LAN cable and go to the item 14. For WiFi connection, please proceed to the next step.

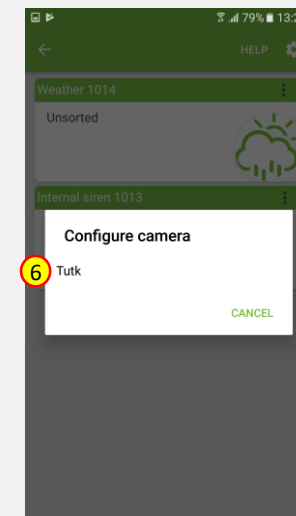


4. Click gear button on the top of the screen.

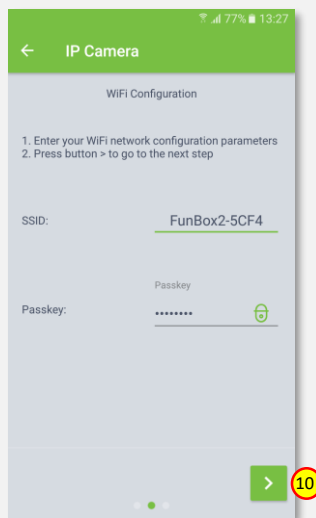
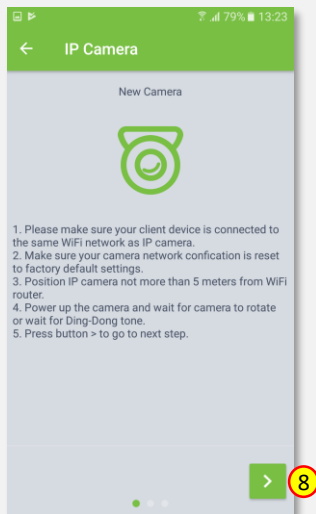
5. Select “Configure camera” option.



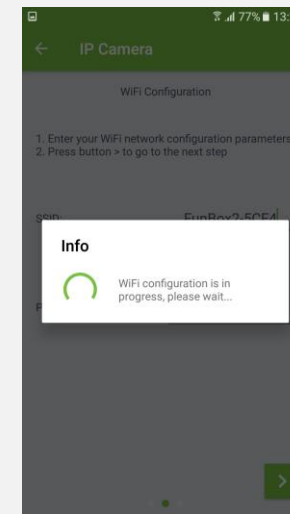
6. Select “Tutk”.



7. Position IP camera not more than 5 meters from WiFi router and power up the camera. Wait for camera to rotate and starts to play Ding-Dong tone in a loop.
8. Press arrow button on the bottom of the screen.
9. Type in SSID and Passkey of your WiFi network.
10. Press arrow button on the bottom of the screen



11. COCKPIT gateway will start WiFi configuration procedure.

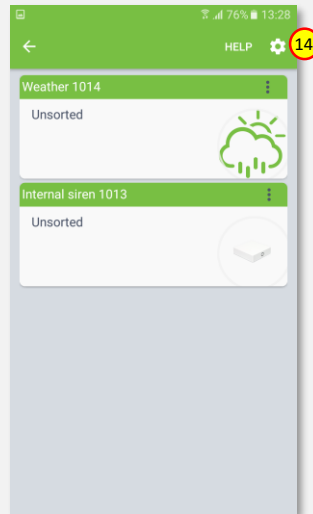


12. When the camera have been connected to the WiFi network, “Ding-dong” sound will stop and appropriate information will appear on the screen.

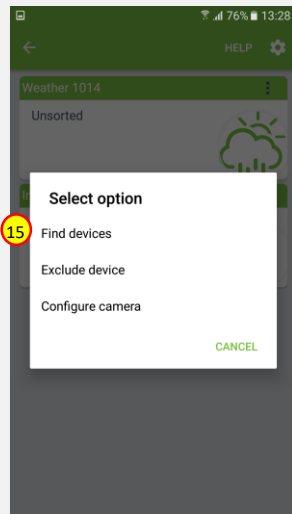


13. Press arrow button to proceed.

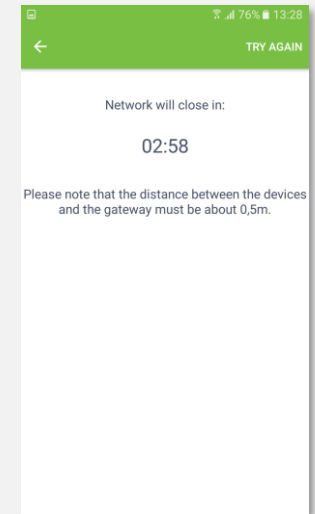
14. When network connection is set (WiFi or LAN), camera can be added to the system. Click gear button on the top of the screen.



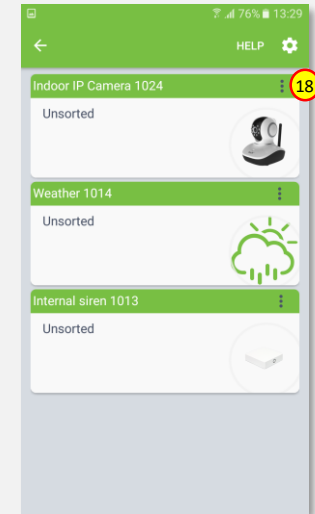
15. Select “Find devices” option.



16. COCKPIT gateway will start “Add new devices mode”.

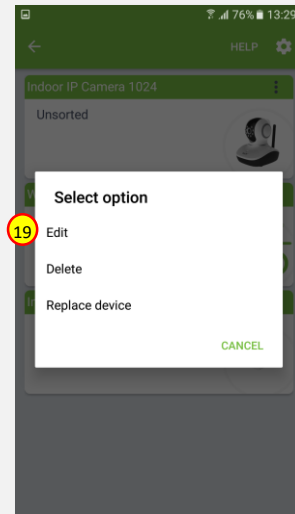


17. After adding process complete, the list of devices appears with Camera present on it.

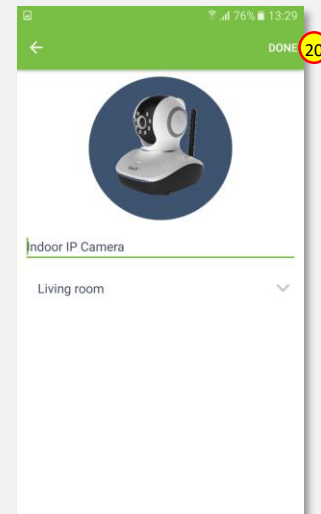


18. Click on “settings” icon located next to the Camera module name.

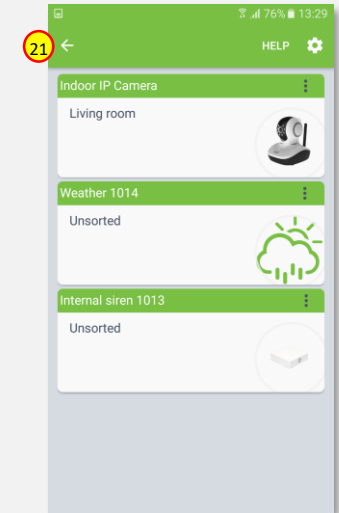
19. Select “Edit” option.



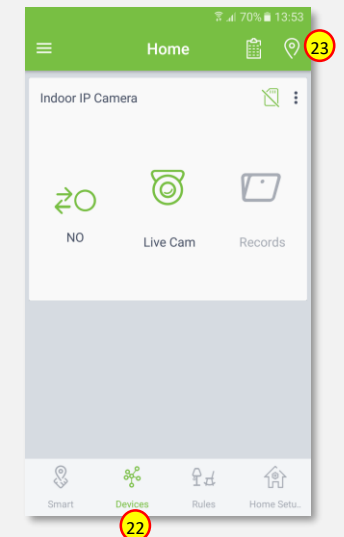
20. Name the device (e.g. Indoor IP Camera) and select room (e.g. Living Room) for the camera module. When you are done, click “DONE” button.



21. You will be directed back to the screen where you can see all added devices. Adding procedure for Camera module is now completed. Press arrow button and you will be directed to “Home Setup” screen.



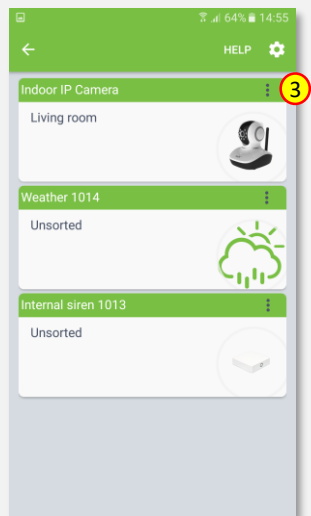
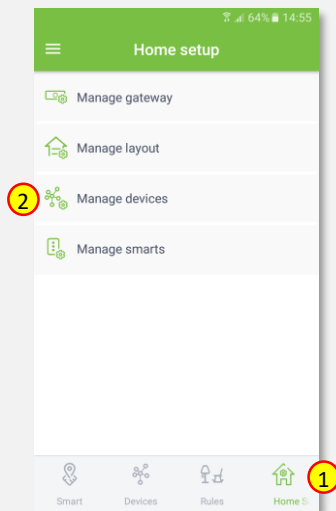
22. To locate newly added device, click “Devices” tab on the bottom of the screen.



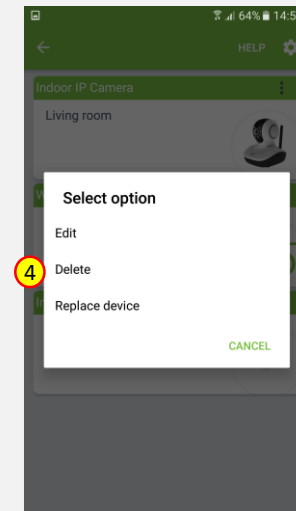
23. If device is not shown on the list, choose the proper room by pressing „Device by location” button.

## Removing Camera

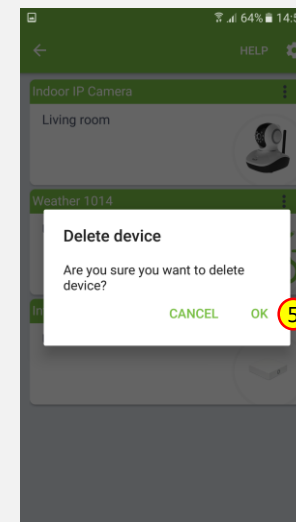
1. Click “Home Setup” tab located in the bottom of Cockpit@Home app.
2. Click „Manage devices” button.
3. Click on “settings” icon located next to the Camera module name.



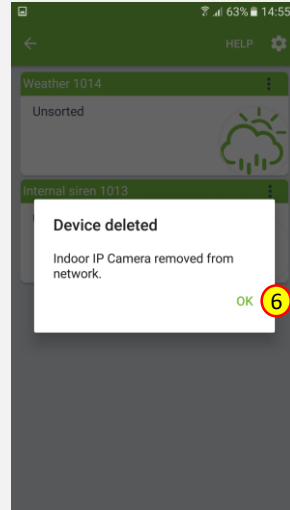
4. Select “Delete” option.



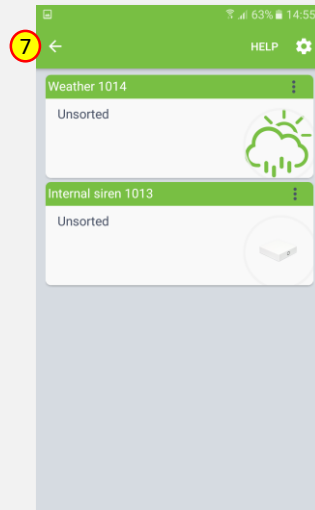
5. Click “OK” to confirm deleting camera from the system.



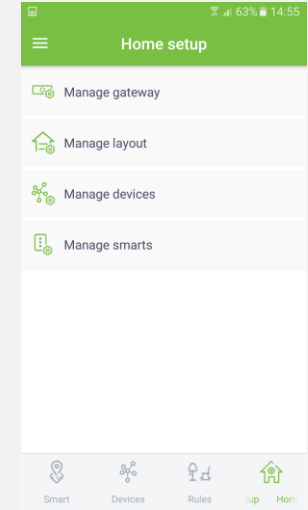
6. Information window, confirming deleting device from the network will appear. Click “OK” to continue.



7. You will be directed back to the screen with list of devices, where Camera module is not present anymore. Press arrow button to proceed.



8. Removing procedure for Camera module is now completed. You will be redirected to “Home Setup” screen.



\* Please remember, that in case of WiFi connection, the camera module is still connected to your WiFi network. To disconnect module from the WiFi network, please restore camera to the factory state by holding “Reset” button for 5s.



COCKPIT Smart Home d.o.o. Nova Gorica  
Ulica Klementa Juga 007  
5250 Solkan  
Slovenia

E-mail: [support@yourcockpit.biz](mailto:support@yourcockpit.biz)  
Tel: +386 5 335 95 00  
Fax: +386 5 300 61 43  
Web: [www.yourcockpit.biz](http://www.yourcockpit.biz)