



Cockpit Single ON/OFF D Add/Remove User Manual

Before starting adding your module, please complete set up procedure for your COCKPIT gateway.

For more information about COCKPIT gateway set up procedure, please refer to the COCKPIT gateway User Manual.



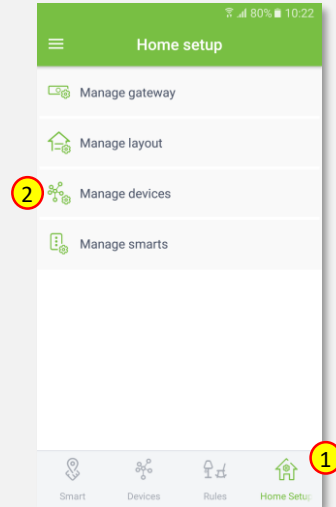
Type: Single ON/OFF D
Ordering code: CKNHND

Date: 17.05.2019
Document: COCKPIT_Single_OnOff_D_Add.Rem_v1_eng

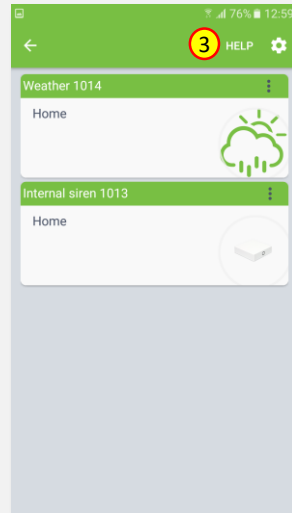
USER MANUAL **EN**

Adding Single ON/OFF D

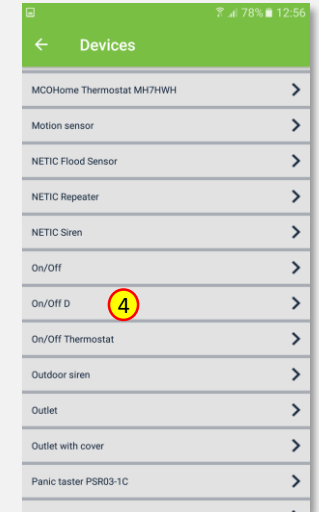
1. Click “Home Setup” tab located in the bottom of Cockpit@Home app.
2. Click „Manage devices”.



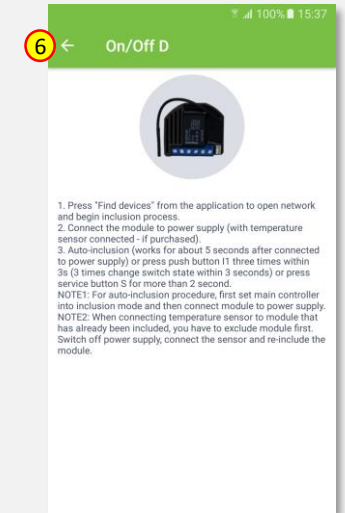
3. Click „HELP” button. It will open the window with the list of instructions (for adding devices).



4. Select „On/Off D”.



5. Read the instruction and choose one of the available option for adding Single ON/OFF D module.



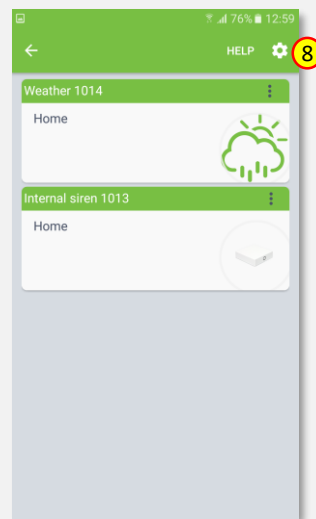
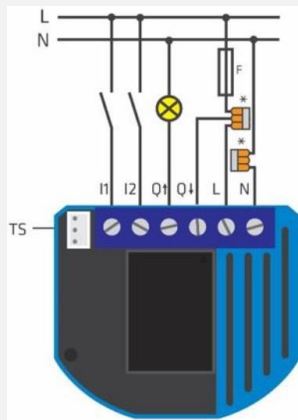
6. After having read the instructions, click the arrow button (twice) to exit the instructions section.

7. Wire Single ON/OFF D module as shown on the diagram (please refer to the Single ON/OFF D user manual for DC and DPLS wiring diagrams).

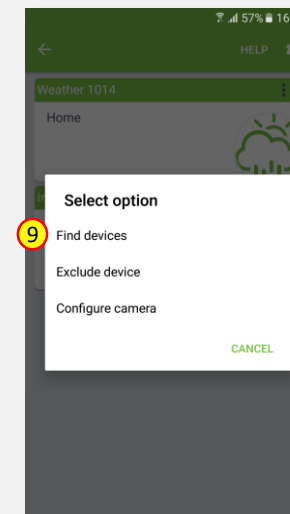
If you have purchased also temperature sensor, connect it to the TS connector (please refer to the Single ON/OFF D user manual for more info).

Next steps depend on the chosen option for adding Single ON/OFF D module. In this manual the use of auto-inclusion feature is presented.

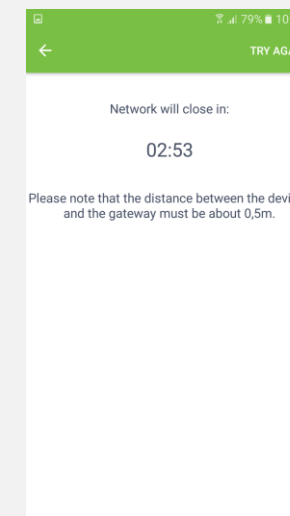
8. Click gear button on the top of the screen.



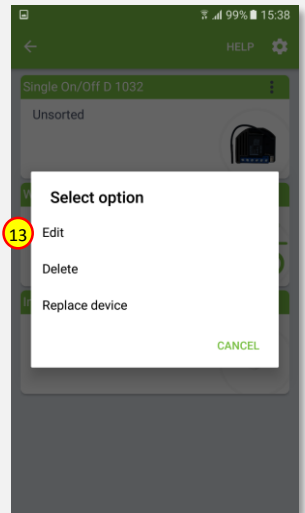
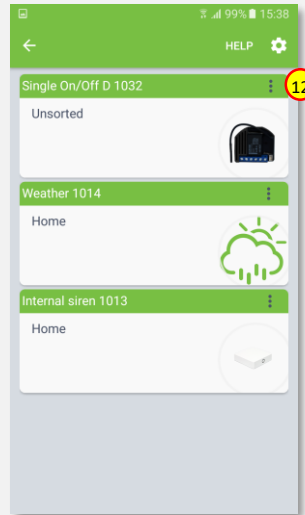
9. Select “Find devices” option.



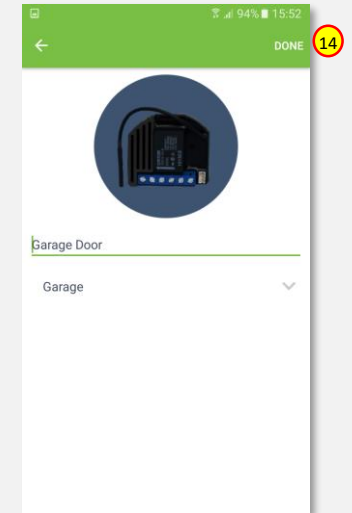
10. COCKPIT gateway will start “Add new devices mode”. Connect Single ON/OFF D module to the power supply. The inclusion process will start automatically.



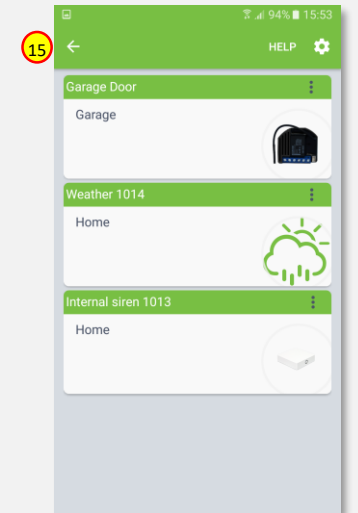
11. After adding process complete, the list of devices appears with Single ON/OFF D module present on it.
12. Click on “settings” icon located next to the Single ON/OFF D module name.
13. Select “Edit” option.



14. Name the device (e.g. Garage Doors) and select room (e.g. Garage) for the Single ON/OFF D module. When you are done, click “DONE” button.



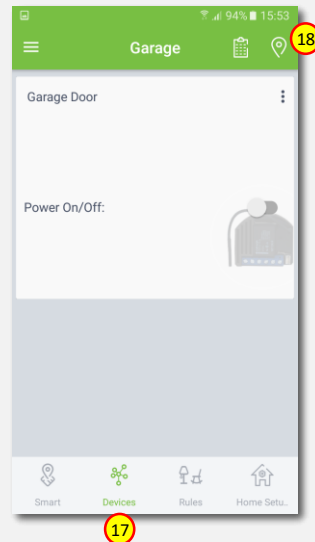
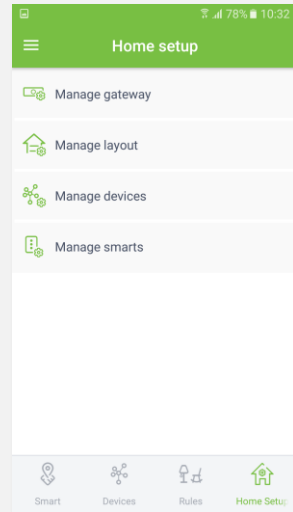
15. You will be directed back to the screen where you can see all added devices. Press arrow button to proceed.



16. Adding procedure for Single ON/OFF D module is now completed. You will be redirected to “Home Setup” screen.

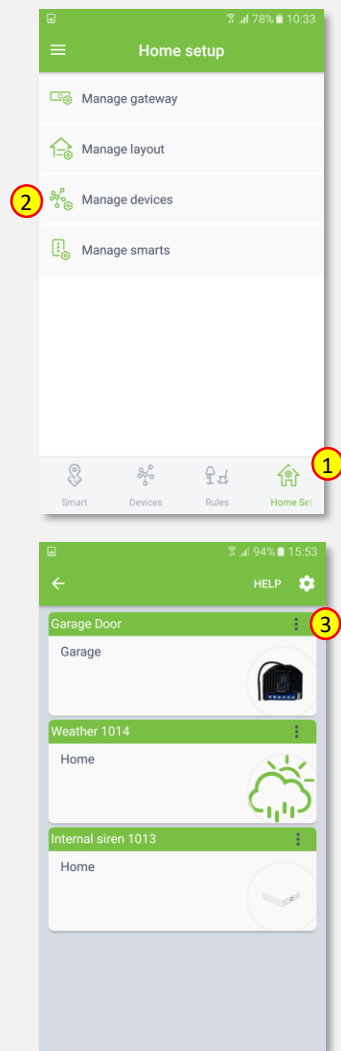
17. To locate newly added device, click “Devices” tab on the bottom of the screen.

18. If device is not shown on the list, choose the proper room by pressing „Device by location” button.

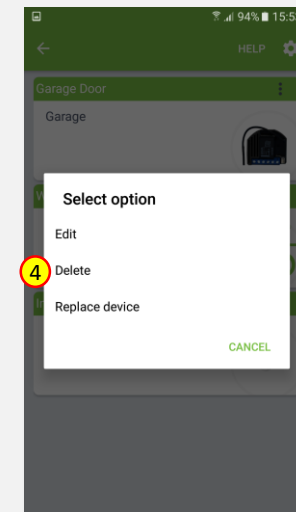


Removing Single ON/OFF D

1. Click “Home Setup” tab located in the bottom of Cockpit@Home app.
2. Click „Manage devices” button.
3. Click on “settings” icon located next to the Single ON/OFF D module name.



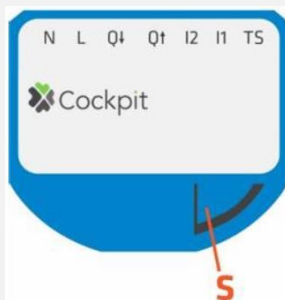
4. Select “Delete” option.



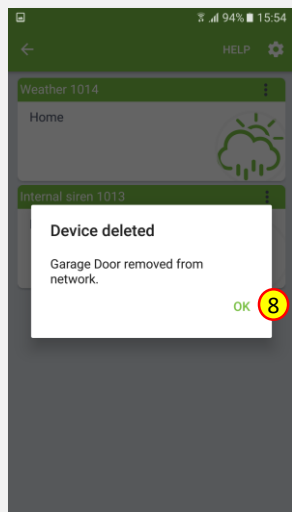
5. COCKPIT gateway will start “Exclude device mode”.
6. Read the instruction and choose one of the available options for remove Single ON/OFF D module.



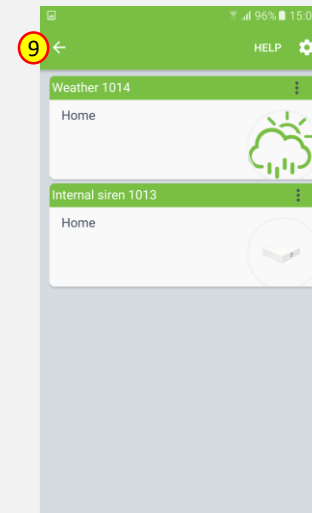
7. Remove the module by connecting it into the mains and pressing the Service button (S) for more than 6 seconds.



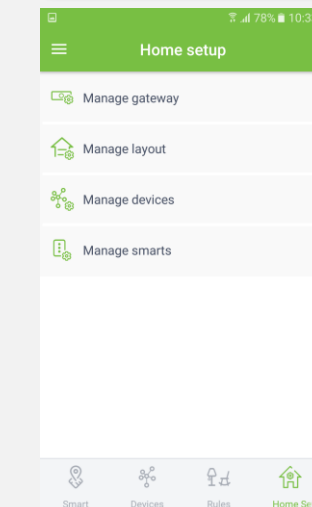
8. When the device / node have been removed, appropriate information will appear on the screen. Click “OK” button to finish the process.



9. You will be directed back to the screen with list of devices, where Single ON/OFF D module is not present anymore. Press arrow button to proceed.



10. Removing procedure for Single ON/OFF D module is now completed. You will be redirected to “Home Setup” screen.





COCKPIT Smart Home d.o.o. Nova Gorica
Ulica Klementa Juga 007
5250 Solkan
Slovenia

E-mail: support@yourcockpit.biz
Tel: +386 5 335 95 00
Fax: +386 5 300 61 43
Web: www.yourcockpit.biz