



Cockpit Radiator Thermostat Add/Remove User Manual

Before starting adding your module, please complete set up procedure for your COCKPIT gateway.

For more information about COCKPIT gateway set up procedure, please refer to the COCKPIT gateway User Manual.



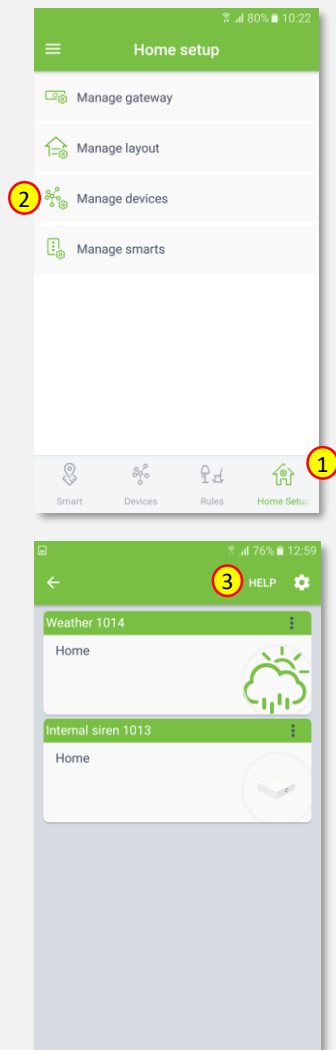
Type: Radiator Thermostat
Ordering code: CKNPAD

Date: 24.05.2019
Document: COCKPIT_Radiator Thermostat_Add.Rem_v1_eng

USER MANUAL **EN**

Adding Radiator Thermostat

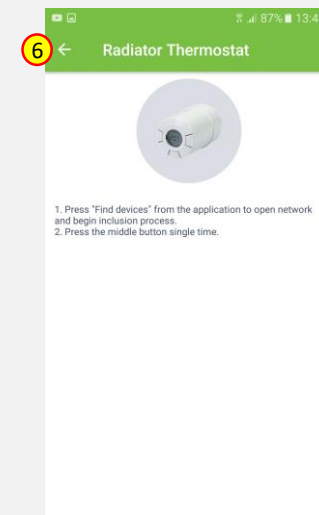
1. Click “Home Setup” tab located in the bottom of Cockpit@Home app.
2. Click „Manage devices”.
3. Click „HELP” button. It will open the window with the list of instructions (for adding devices).




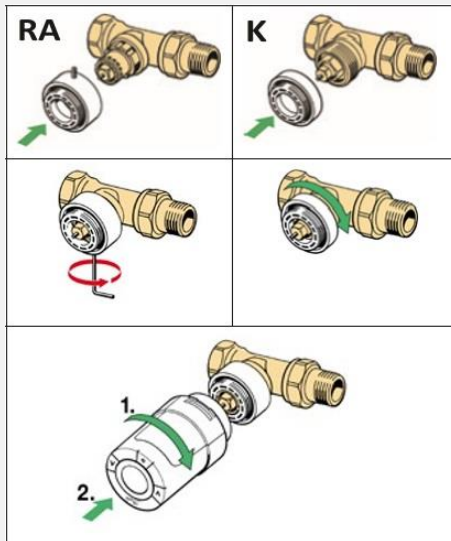
4. Select „Radiator Thermostat”.



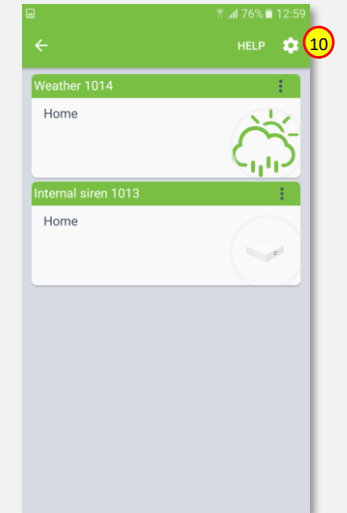
5. Read the instruction for adding Radiator Thermostat module.
6. After having read the instructions, click the arrow button (twice) to exit the instructions section.



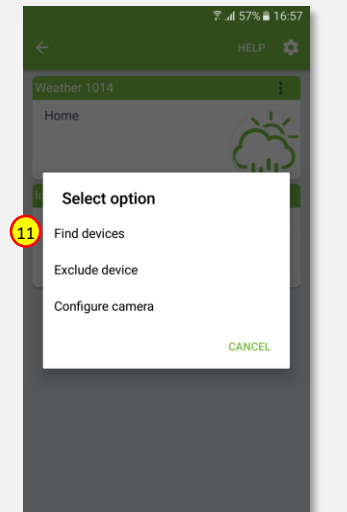
7. Choose proper adapter (RA or K, depending on the valve) and mount it on the thermostatic valve.
8. Screw the Radiator Thermostat onto the adapter and tighten by hand (max. 5 Nm).
9. A large “M” flashes on the display, press and hold  to fix the thermostat.



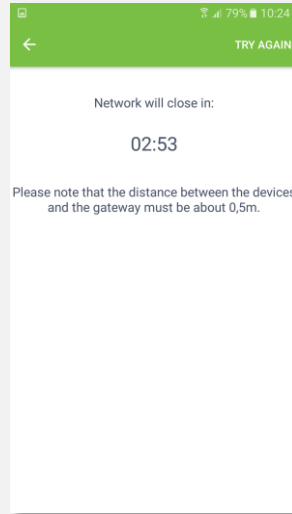
10. Click gear button on the top of the screen.



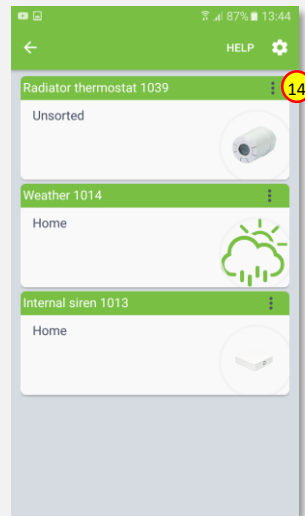
11. Select “Find devices” option.



12. COCKPIT gateway will start “Add new devices mode”. Connect Radiator Thermostat module to the power supply. The inclusion process will start automatically.

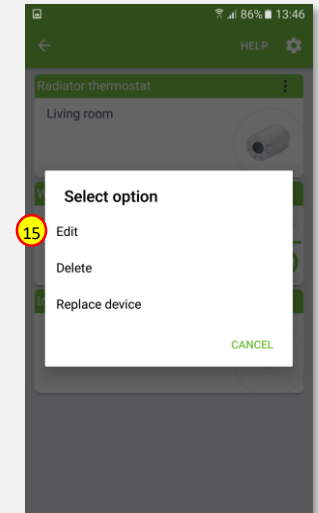


13. After adding process complete, the list of devices appears with Radiator Thermostat module present on it.

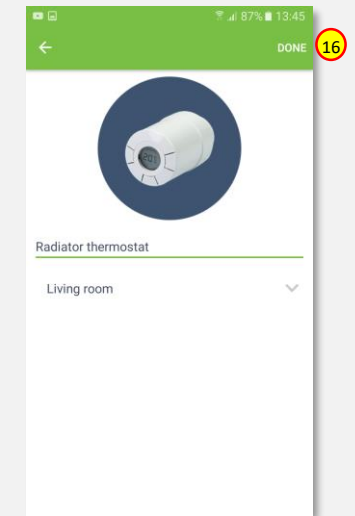


14. Click on “settings” icon located next to the Radiator Thermostat module name.

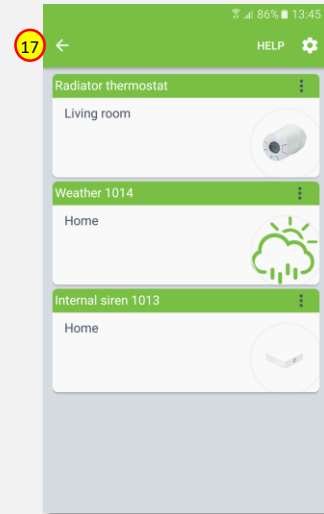
15. Select “Edit” option.



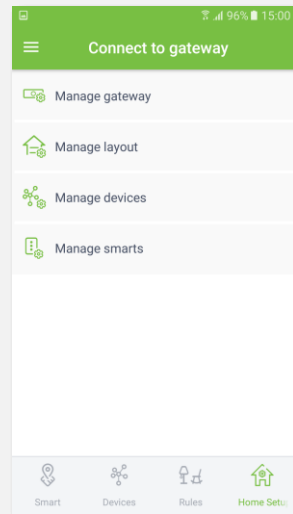
16. Name the device (e.g. Radiator Thermostat) and select room (e.g. Living Room) for the Radiator Thermostat module. When you are done, click “DONE” button.



17. You will be directed back to the screen where you can see all added devices. Press arrow button to proceed.

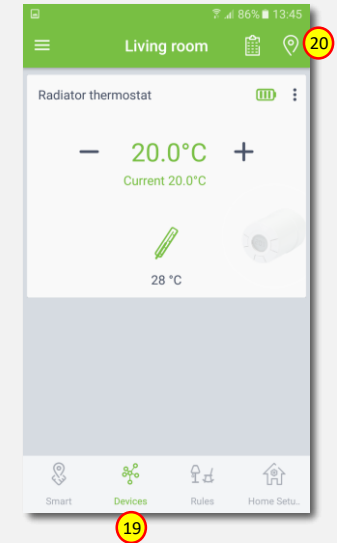


18. Adding procedure for Radiator Thermostat module is now completed. You will be redirected to “Home Setup” screen.



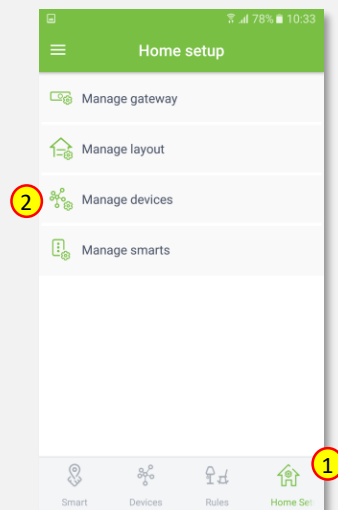
19. To locate newly added device, click “Devices” tab on the bottom of the screen.

20. If device is not shown on the list, choose the proper room by pressing „Device by location” button.

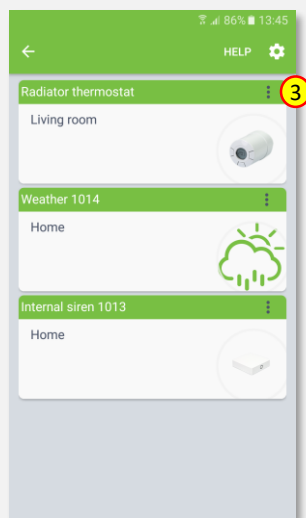


Removing Radiator Thermostat

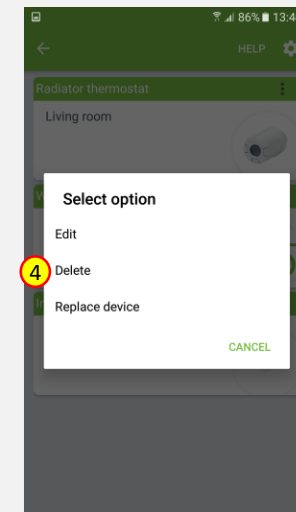
1. Click “Home Setup” tab located in the bottom of Cockpit@Home app.
2. Click „Manage devices” button.



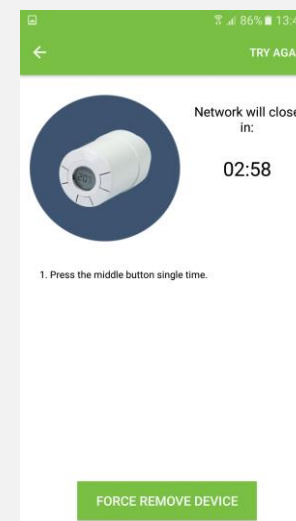
3. Click on “settings” icon located next to the Radiator Thermostat module name.



4. Select “Delete” option.



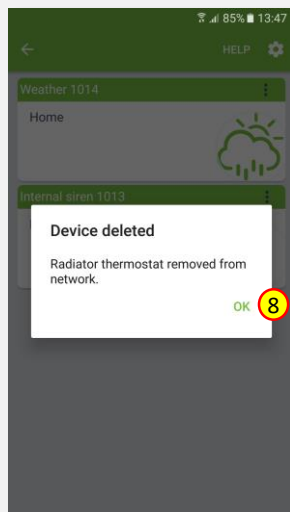
5. COCKPIT gateway will start “Exclude device mode”.
6. Read the instruction for remove Radiator Thermostat module.



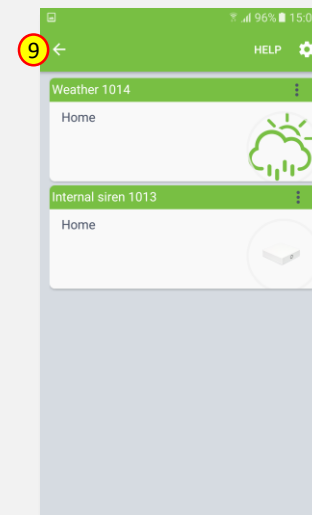
7. Remove the module by connecting it into the mains and pressing the Service button (👁️).



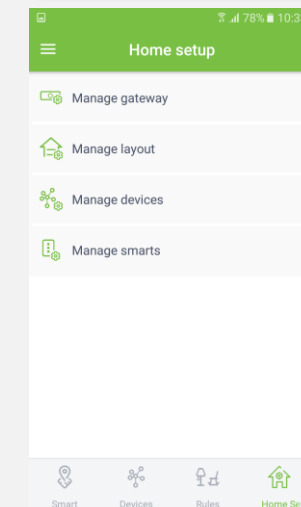
8. When the device / node have been removed, appropriate information will appear on the screen. Click “OK” button to finish the process.



9. You will be directed back to the screen with list of devices, where Radiator Thermostat module is not present anymore. Press arrow button to proceed.



10. Removing procedure for Radiator Thermostat module is now completed. You will be redirected to “Home Setup” screen.





COCKPIT Smart Home d.o.o. Nova Gorica
Ulica Klementa Juga 007
5250 Solkan
Slovenia

E-mail: support@yourcockpit.biz
Tel: +386 5 335 95 00
Fax: +386 5 300 61 43
Web: www.yourcockpit.biz