



# Cockpit RS Room Sensor Add/Remove User Manual

Before starting adding your module, please complete set up procedure for your COCKPIT gateway.

For more information about COCKPIT gateway set up procedure, please refer to the COCKPIT gateway User Manual.



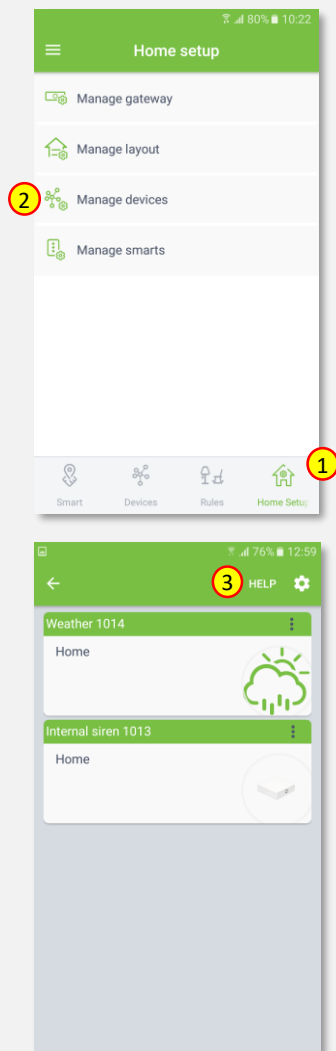
Type: RS Room Sensor  
Ordering code: CKNPBD

Date: 07.06.2019  
Document: COCKPIT\_RS Room Sensor\_Add.Rem\_v1\_eng

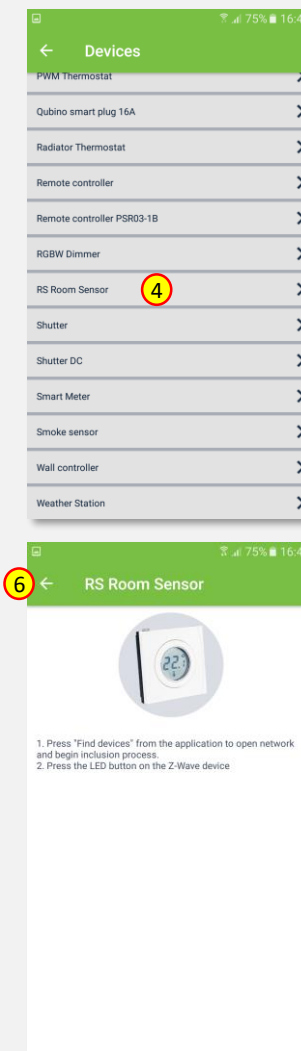
USER MANUAL **EN**

## Adding RS Room Sensor

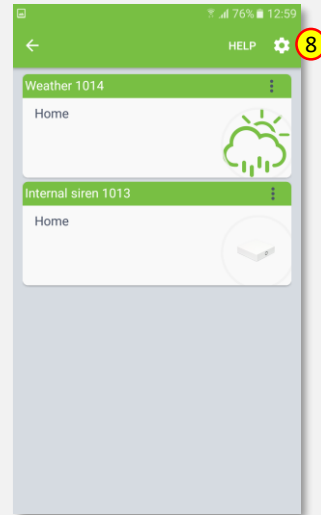
1. Click “Home Setup” tab located in the bottom of Cockpit@Home app.
2. Click „Manage devices”.
3. Click „HELP” button. It will open the window with the list of instructions (for adding devices).



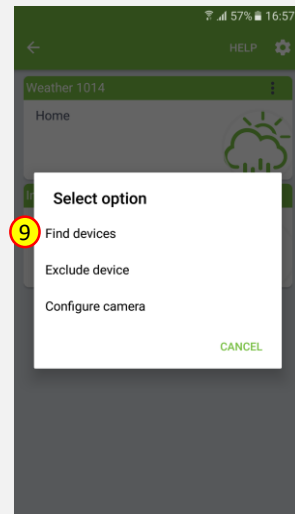
4. Select „RS Room Sensor”.
5. Read the instruction for adding RS Room Sensor module.
6. After having read the instructions, click the arrow button (twice) to exit the instructions section.



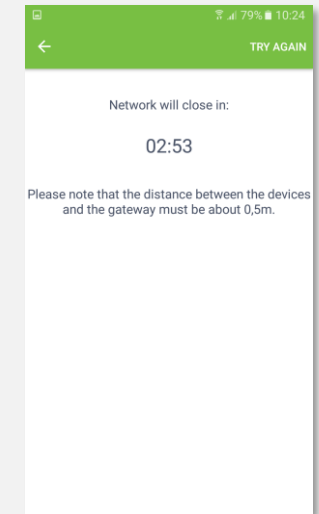
7. Click gear button on the top of the screen.



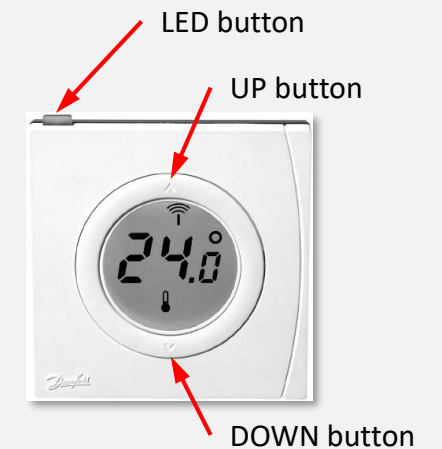
8. Select “Find devices” option.



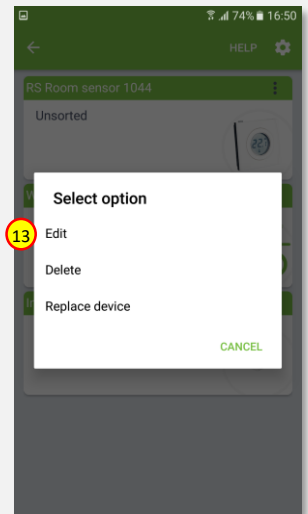
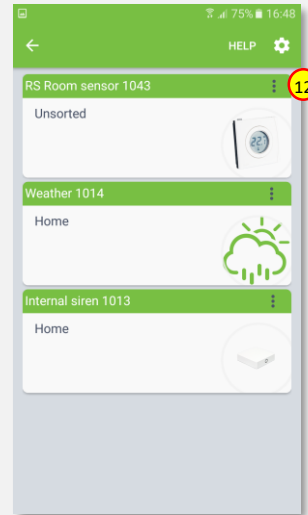
9. COCKPIT gateway will start “Add new devices mode”.



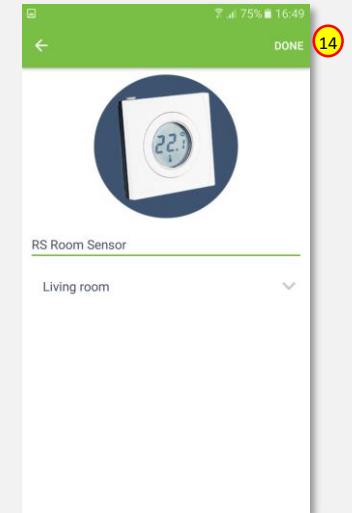
10. Add RS Room Sensor module by pressing LED button.



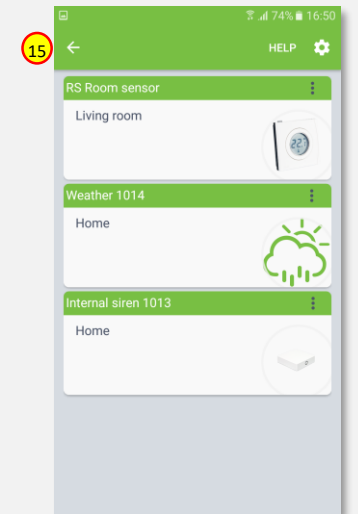
11. After adding process complete, the list of devices appears with RS Room Sensor module present on it.
12. Click on “settings” icon located next to the RS Room Sensor module name.
13. Select “Edit” option.



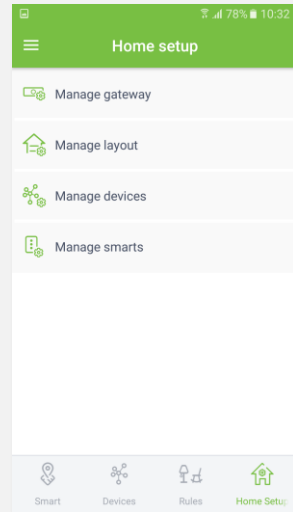
14. Name the device (e.g. RS Room Sensor) and select room (e.g. Living room) for the RS Room Sensor module. When you are done, click “DONE” button.



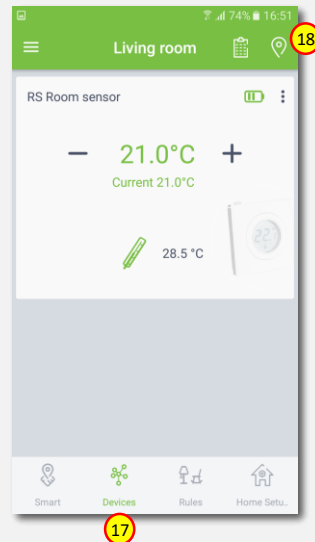
15. You will be directed back to the screen where you can see all added devices. Press arrow button to proceed.



16. Adding procedure for RS Room Sensor module is now completed. You will be redirected to “Home Setup” screen.



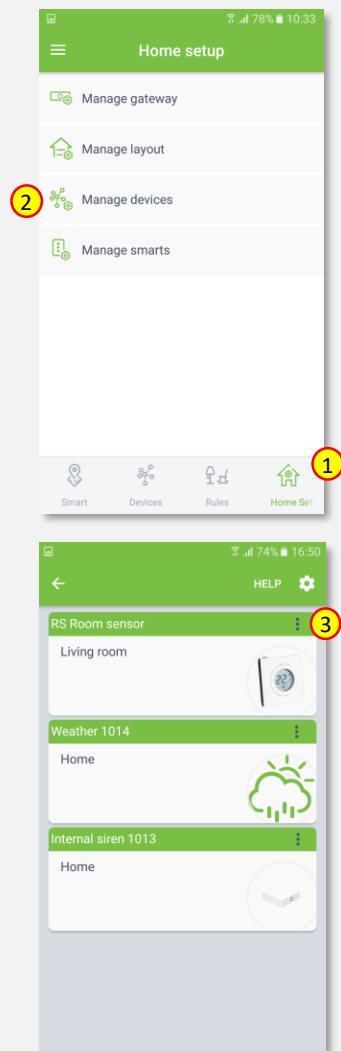
17. To locate newly added device, click “Devices” tab on the bottom of the screen.



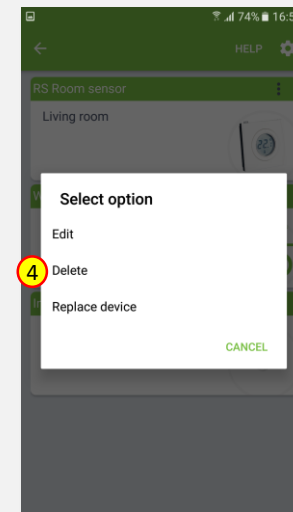
18. If device is not shown on the list, choose the proper room by pressing „Device by location” button.

## Removing RS Room Sensor

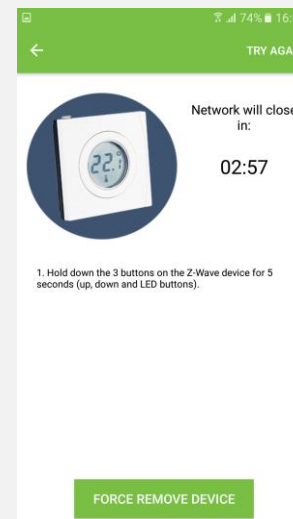
1. Click “Home Setup” tab located in the bottom of Cockpit@Home app.
2. Click „Manage devices” button.
3. Click on “settings” icon located next to the RS Room Sensor module name.



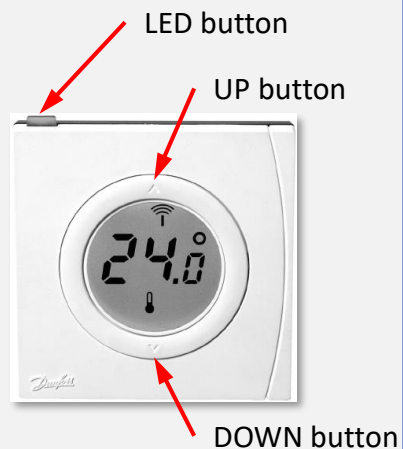
4. Select “Delete” option.



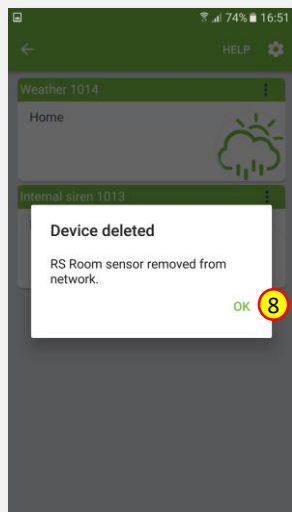
5. COCKPIT gateway will start “Exclude device mode”.
6. Read the instruction for remove RS Room Sensor module.



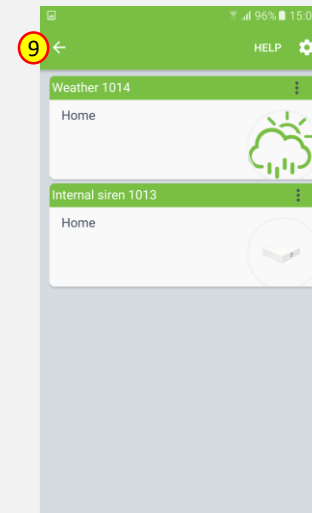
7. Remove the module by holding down 3 buttons (LED, UP, DOWN) for 5 seconds.



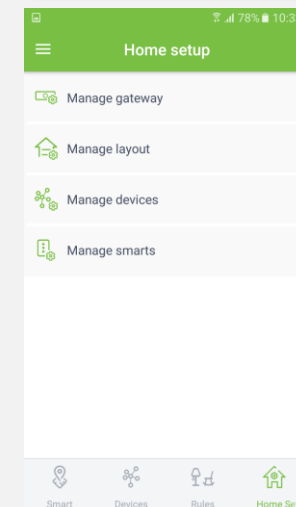
8. When the device / node have been removed, appropriate information will appear on the screen. Click “OK” button to finish the process.



9. You will be directed back to the screen with list of devices, where RS Room Sensor module is not present anymore. Press arrow button to proceed.



10. Removing procedure for RS Room Sensor module is now completed. You will be redirected to “Home Setup” screen.





COCKPIT Smart Home d.o.o. Nova Gorica  
Ulica Klementa Juga 007  
5250 Solkan  
Slovenia

E-mail: [support@yourcockpit.biz](mailto:support@yourcockpit.biz)  
Tel: +386 5 335 95 00  
Fax: +386 5 300 61 43  
Web: [www.yourcockpit.biz](http://www.yourcockpit.biz)