



# Cockpit Electric Heating Thermostat Add/Remove User Manual

Before starting adding your module, please complete set up procedure for your COCKPIT gateway.

For more information about COCKPIT gateway set up procedure, please refer to the COCKPIT gateway User Manual.



Type: Electric Heating Thermostat  
Ordering code: CKNPHD

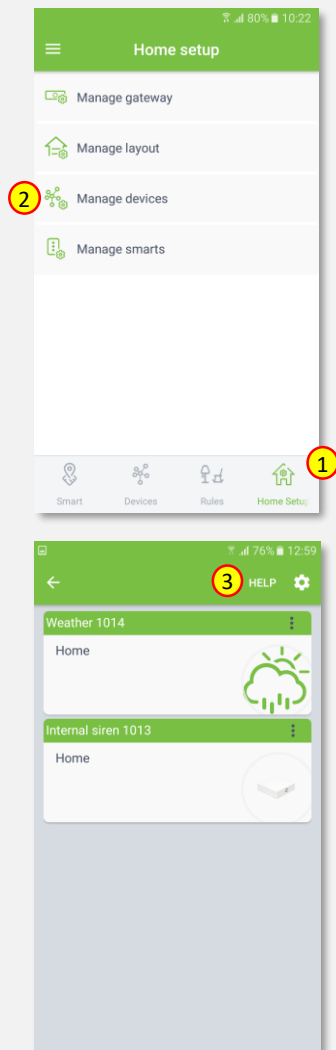
Date: 14.06.2019

Document: COCKPIT\_Electric\_Heating\_Thermostat\_Add.Rem\_v1\_eng

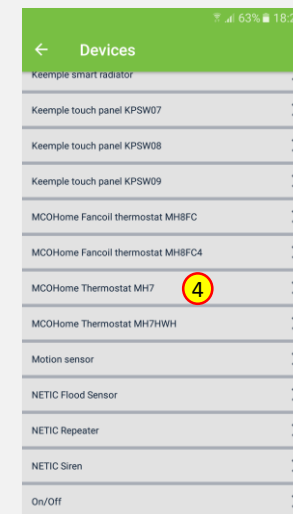
USER MANUAL **EN**

## Adding Electric Heating Thermostat

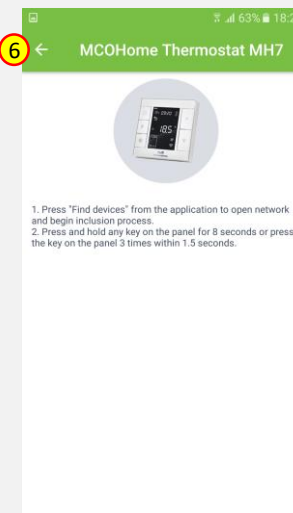
1. Click “Home Setup” tab located in the bottom of Cockpit@Home app.
2. Click „Manage devices”.
3. Click „HELP” button. It will open the window with the list of instructions (for adding devices).



4. Select „MCOHome Thermostat MH7”.

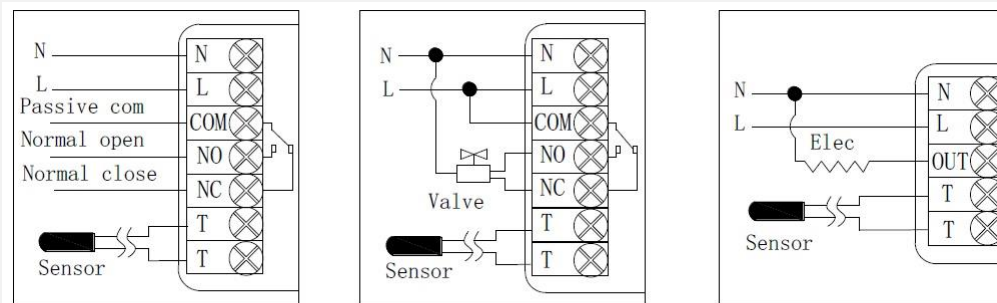


5. Read the instruction for adding Electric Heating Thermostat module.
6. After having read the instructions, click the arrow button (twice) to exit the instructions section.



7. Wire the Electric Heating Thermostat module as shown on one of the diagrams (depending on your heating system).

Next steps depend on the chosen option for adding Electric Heating Thermostat. In this manual the use of auto-inclusion feature is presented.

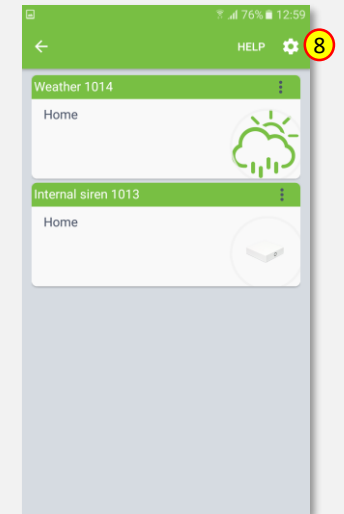


( 1 ) Passive Wall-boiler

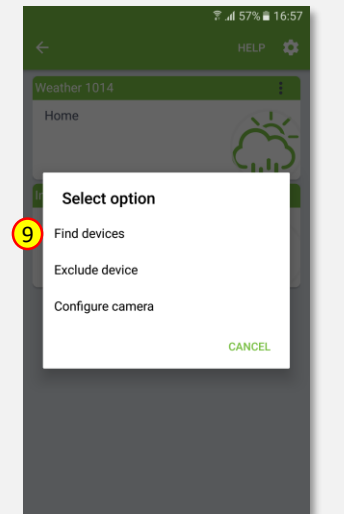
( 2 ) Active normal close valve

( 3 ) Electrical Heating

8. Click gear button on the top of the screen.



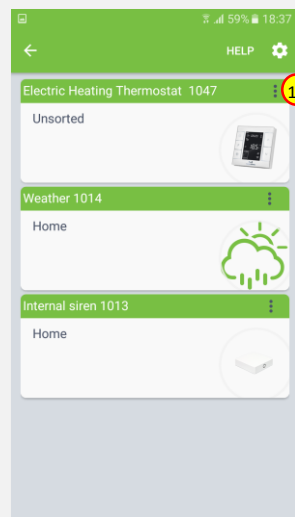
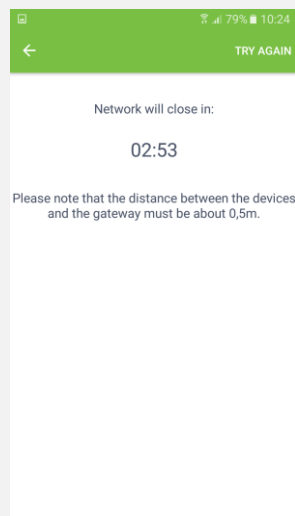
9. Select “Find devices” option.



10. COCKPIT gateway will start “Add new devices mode”. Connect Electric Heating Thermostat module to the power supply. The inclusion process will start automatically.

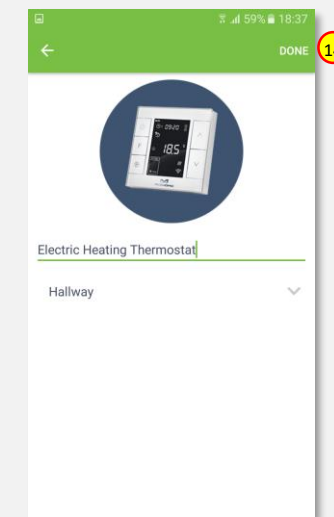
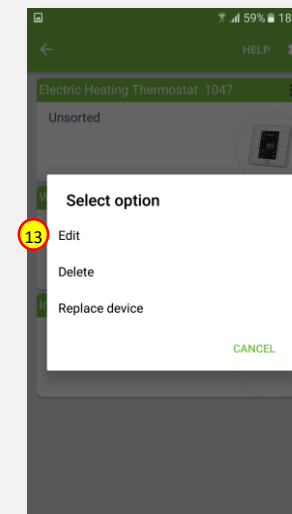
11. After adding process complete, the list of devices appears with Electric Heating Thermostat module present on it.

12. Click on “settings” icon located next to the Electric Heating Thermostat module name.

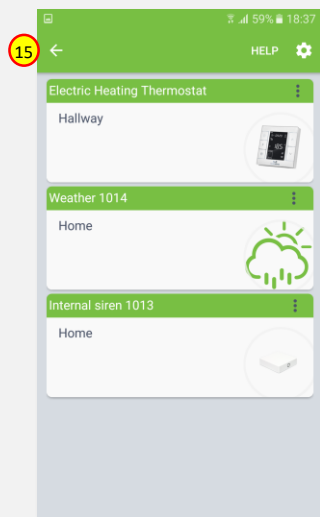


13. Select “Edit” option.

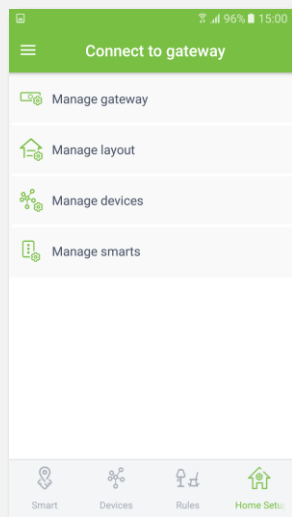
14. Name the device (e.g. Electric Heating Thermostat) and select room (e.g. Hallway) for the Electric Heating Thermostat module. When you are done, click “DONE” button.



15. You will be directed back to the screen where you can see all added devices. Press arrow button to proceed.

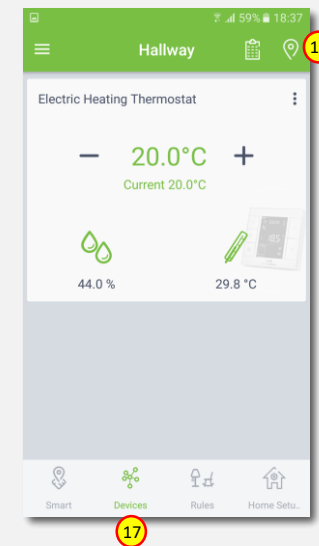


16. Adding procedure for Electric Heating Thermostat module is now completed. You will be redirected to “Home Setup” screen.



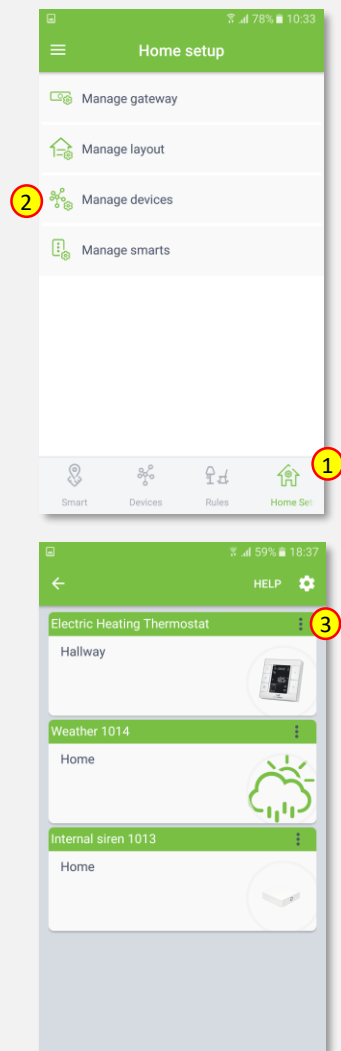
17. To locate newly added device, click “Devices” tab on the bottom of the screen.

18. If device is not shown on the list, choose the proper room by pressing „Device by location” button.

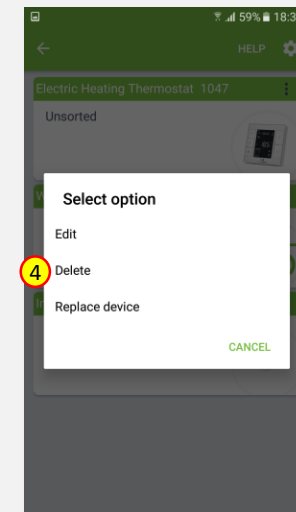


## Removing Electric Heating Thermostat

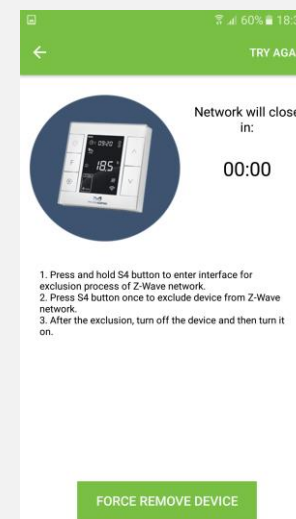
1. Click “Home Setup” tab located in the bottom of Cockpit@Home app.
2. Click „Manage devices” button.
3. Click on “settings” icon located next to the Electric Heating Thermostat module name.



4. Select “Delete” option.



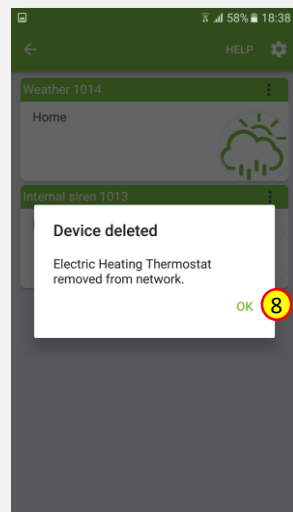
5. COCKPIT gateway will start “Exclude device mode”.
6. Read the for remove Electric Heating Thermostat module.



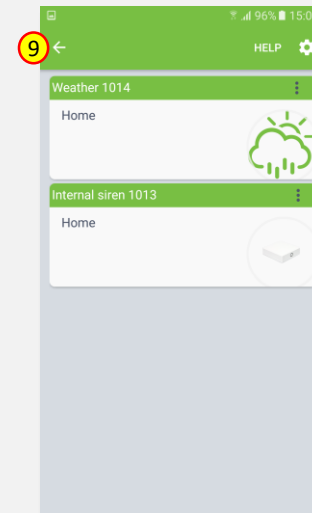
7. Press and hold S4 button to enter interface for exclusion process than press S4 button to exclude device from the network.



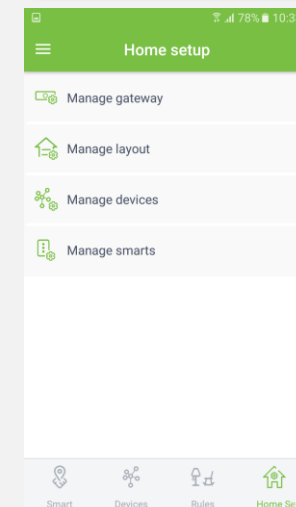
8. When the device / node have been removed, appropriate information will appear on the screen. Click “OK” button to finish the process.



9. You will be directed back to the screen with list of devices, where Electric Heating Thermostat module is not present anymore. Press arrow button to proceed.



10. Removing procedure for Electric Heating Thermostat module is now completed. You will be redirected to “Home Setup” screen.





COCKPIT Smart Home d.o.o. Nova Gorica  
Ulica Klementa Juga 007  
5250 Solkan  
Slovenia

E-mail: [support@yourcockpit.biz](mailto:support@yourcockpit.biz)  
Tel: +386 5 335 95 00  
Fax: +386 5 300 61 43  
Web: [www.yourcockpit.biz](http://www.yourcockpit.biz)