



# Cockpit 3-Phase Smart Meter Add/Remove User Manual

Before starting adding your module, please complete set up procedure for your COCKPIT gateway.

For more information about COCKPIT gateway set up procedure, please refer to the COCKPIT gateway User Manual.



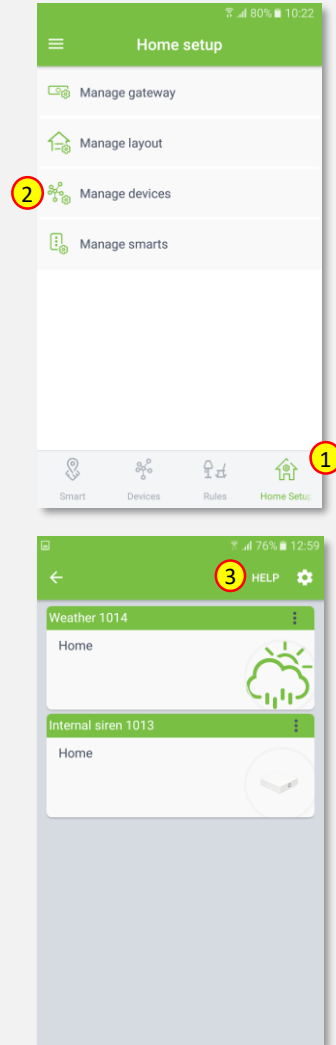
Type: 3-Phase Smart Meter  
Ordering code: CKNHXD

Date: 31.05.2019  
Document: COCKPIT\_3-Phase Smart Meter\_Add.Rem\_v1\_eng

USER MANUAL **EN**

## Adding 3-Phase Smart Meter

1. Click “Home Setup” tab located in the bottom of Cockpit@Home app.
2. Click „Manage devices”.
3. Click „HELP” button. It will open the window with the list of instructions (for adding devices).

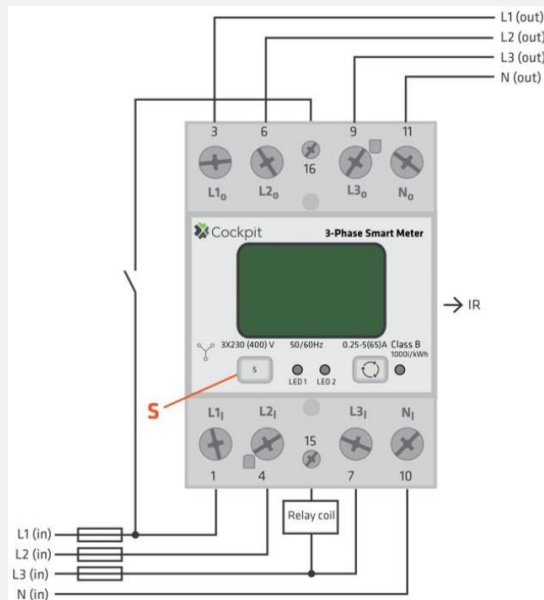


4. Select „3phase Smart Meter”.

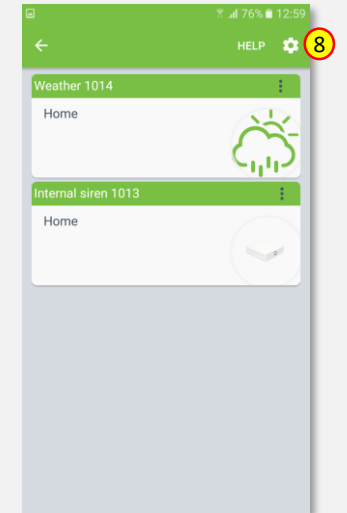


5. Read the instruction and choose one of the available option for adding 3-Phase Smart Meter module.
6. After having read the instructions, click the arrow button (twice) to exit the instructions section.

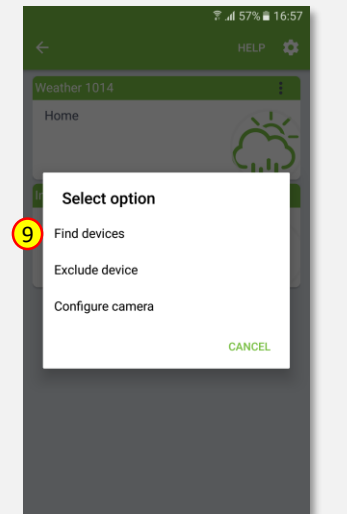
7. Wire 3-Phase Smart Meter module as shown on the diagram.  
Next steps depend on the chosen option for adding 3-Phase Smart Meter module. In this manual the use of auto-inclusion feature is presented.



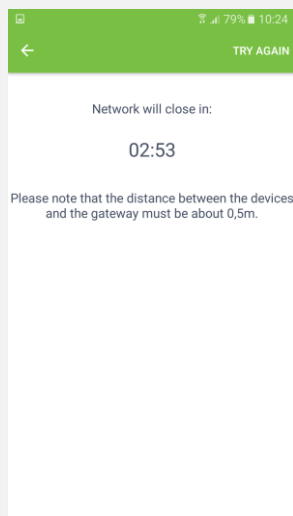
8. Click gear button on the top of the screen.



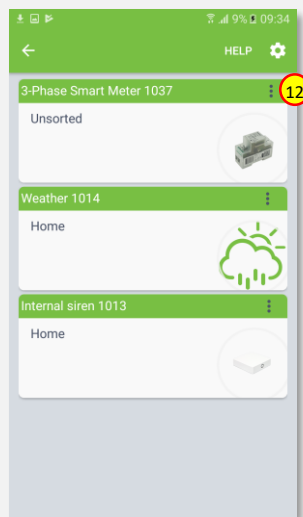
9. Select “Find devices” option.



10. COCKPIT gateway will start “Add new devices mode”. Connect 3-Phase Smart Meter module to the power supply. The inclusion process will start automatically.

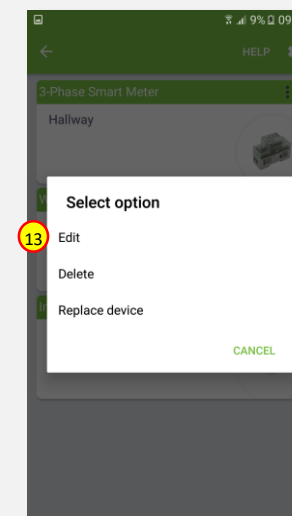


11. After adding process complete, the list of devices appears with 3-Phase Smart Meter module present on it.

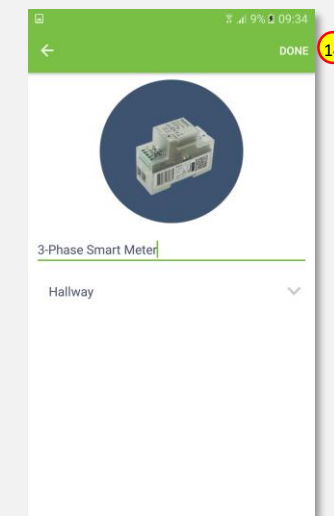


12. Click on “settings” icon located next to the 3-Phase Smart Meter module name.

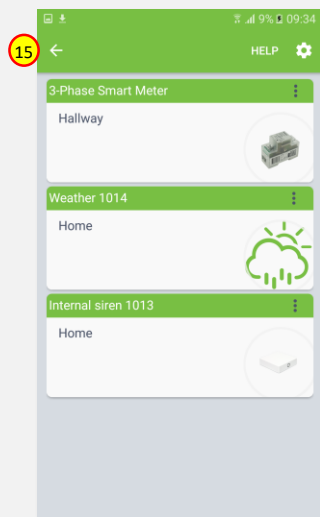
13. Select “Edit” option.



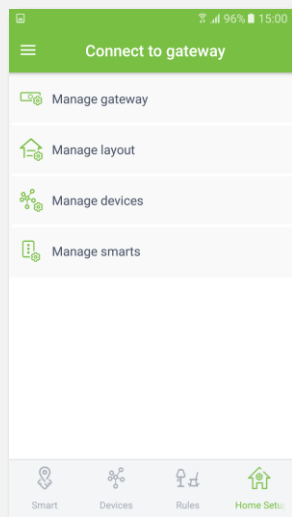
14. Name the device (e.g. 3-Phase Smart Meter) and select room (e.g. Hallway) for the 3-Phase Smart Meter module. When you are done, click “DONE” button.



15. You will be directed back to the screen where you can see all added devices. Press arrow button to proceed.

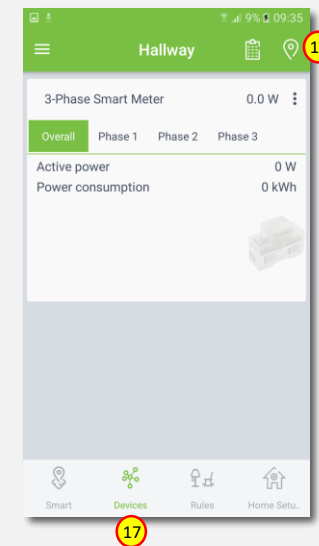


16. Adding procedure for 3-Phase Smart Meter module is now completed. You will be redirected to “Home Setup” screen.



17. To locate newly added device, click “Devices” tab on the bottom of the screen.

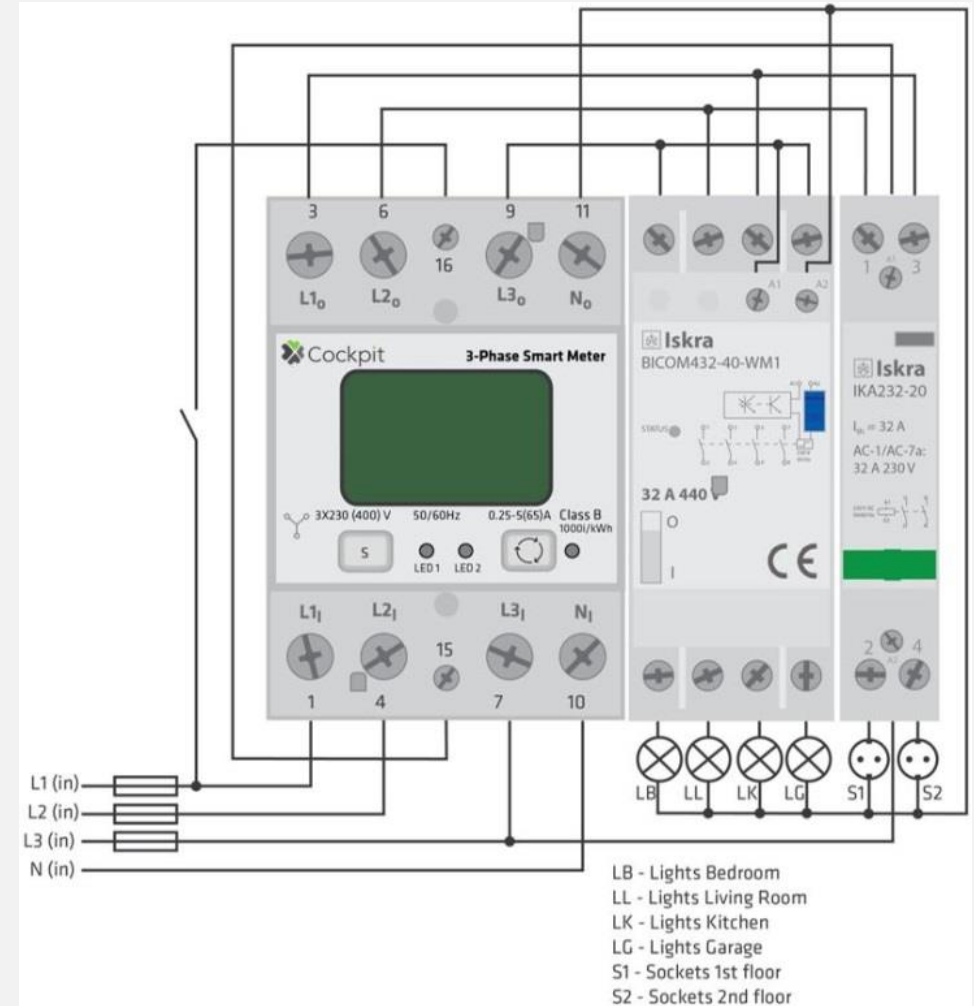
18. If device is not shown on the list, choose the proper room by pressing „Device by location” button.



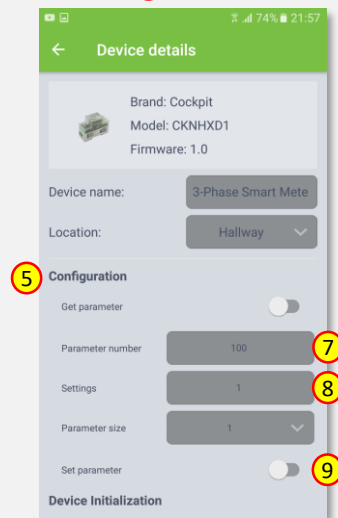
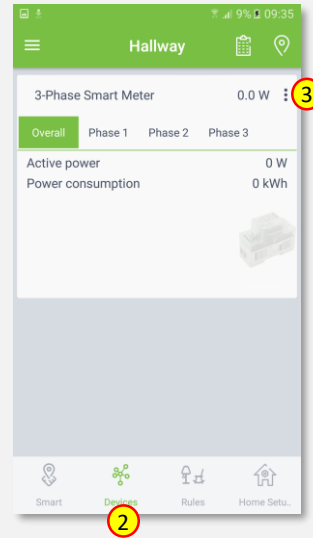
## Adding external relays

The Cockpit 3-Phase Smart Meter is the only three-phase smart meter worldwide which allows connection of additional two contactors - IKA/BICOM (IKA and BICOM are sold separately - for more info, please see Cockpit catalogue). Use of IKA/BICOM allows to control (turn On/Off) external circuits like e.g. lights, electrical heating, heat pumps etc. In order to install and activate IKA and BICOM, please go through the following steps.

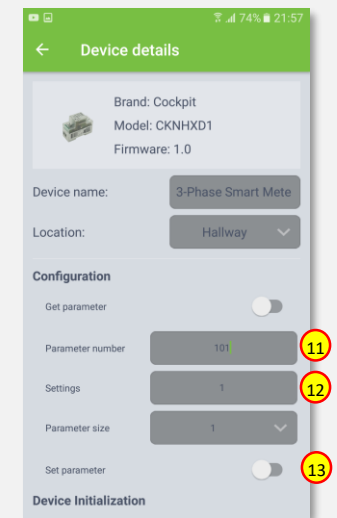
1. Wire the IKA and BICOM modules as shown on the example diagram.  
Please note that wiring can vary depending on the specific use-case. For more use-cases and wiring diagrams, please refer to 3-Phase Smart Meter extended user manual.



2. Connect 3-Phase Smart Meter module to the power supply and locate device in the Cockpit@home app by clicking “Devices” tab on the bottom of the screen.
3. Click on “settings” icon of the 3-Phase Smart Meter module.
4. It opens “Device details” window for different parameters.
5. Scroll down to the “Configuration” section.
6. To activate BICOM, parameter 100 has to be set.



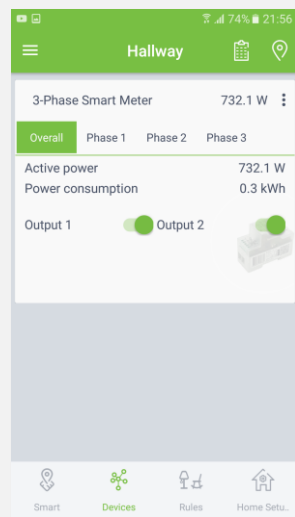
7. Type in 100 in the „Parameter number” field.
8. Type in the „1” (if BICOM is connected to all 3 Phases) or „2” (if BICOM is connected to a Phase 1) in the „Settings” field.
9. Click on the „Set parameter” button.
10. To activate IKA, parameter 101 has to be set.
11. Type in 100 in the „Parameter number” field.
12. Type in the „1” in the „Settings” field.
13. Click on the „Set parameter” button.



14. After parameters change, to make IKA and BICOME active, 3-Phase Smart Meter has to be excluded from the gateway (without resetting to factory settings) and then re included again (please refer to “Removing 3-Phase Smart Meter” and “Adding 3-Phase Smart Meter” sections of this manual for exclusion/inclusion procedure.

15. When the re-inclusion process is finished, locate 3-Phase Smart Meter module by clicking “Devices” tab on the bottom of the screen of Cockpit@Home app.

16. In this example, both relays (IKA and BICOM) were installed - two outputs are available.

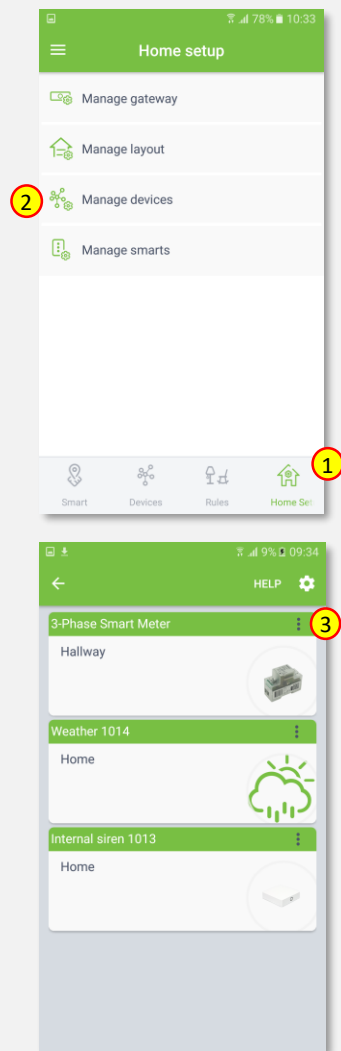


15

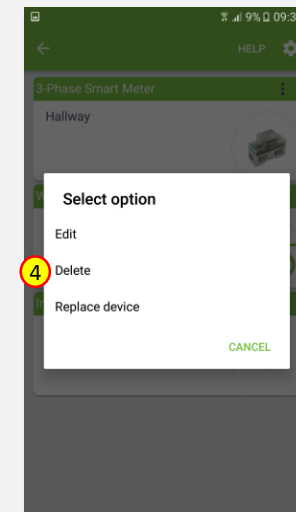


## Removing 3-Phase Smart Meter

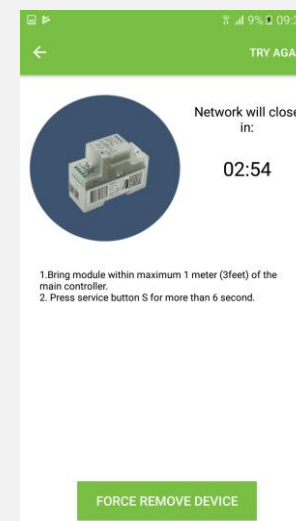
1. Click “Home Setup” tab located in the bottom of Cockpit@Home app.
2. Click „Manage devices” button.
3. Click on “settings” icon located next to the 3-Phase Smart Meter module name.



4. Select “Delete” option.



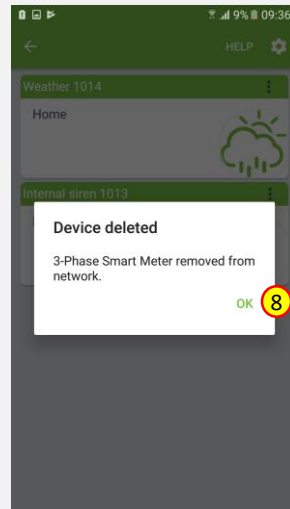
5. COCKPIT gateway will start “Exclude device mode”.
6. Read the instruction and choose one of the available options for remove 3-Phase Smart Meter module.



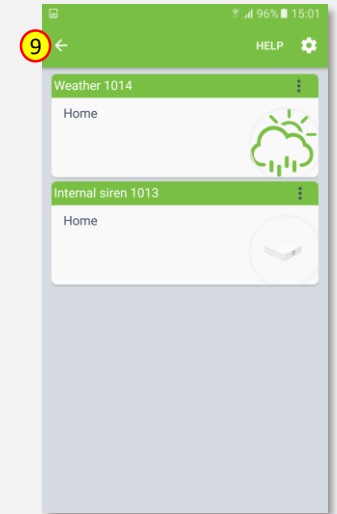
7. Remove the module by connecting it into the mains and pressing the Service button (S) between 0.2 and 6 seconds.



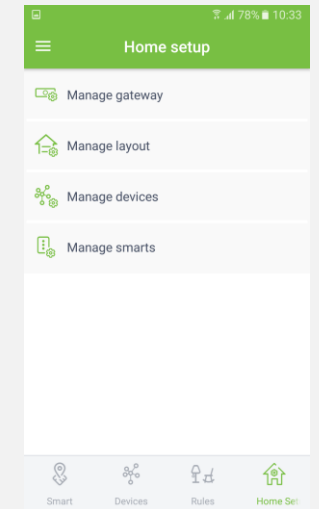
8. When the device / node have been removed, appropriate information will appear on the screen. Click “OK” button to finish the process.



9. You will be directed back to the screen with list of devices, where 3-Phase Smart Meter module is not present anymore. Press arrow button to proceed.



10. Removing procedure for 3-Phase Smart Meter module is now completed. You will be redirected to “Home Setup” screen.





COCKPIT Smart Home d.o.o. Nova Gorica  
Ulica Klementa Juga 007  
5250 Solkan  
Slovenia

E-mail: [support@yourcockpit.biz](mailto:support@yourcockpit.biz)  
Tel: +386 5 335 95 00  
Fax: +386 5 300 61 43  
Web: [www.yourcockpit.biz](http://www.yourcockpit.biz)