



Cockpit 3-IN-1 Sensor

Add/Remove User Manual

Before starting adding your module, please complete set up procedure for your COCKPIT gateway.

For more information about COCKPIT gateway set up procedure, please refer to the COCKPIT gateway User Manual.



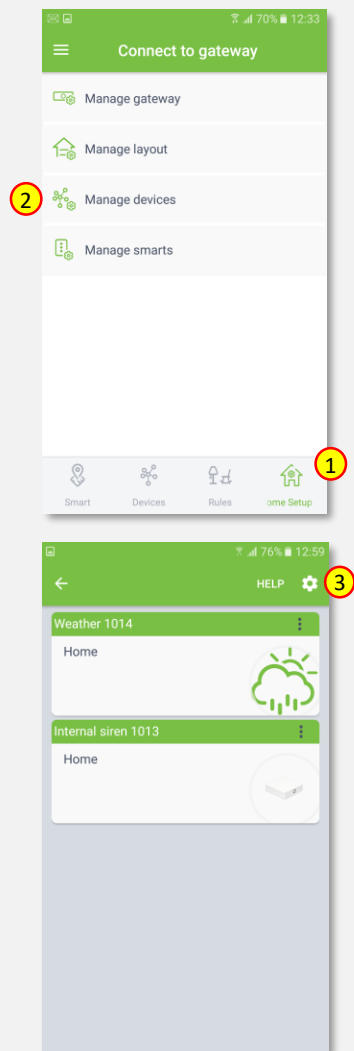
Type: 3-IN-1 Sensor
Ordering code: CKNPED

Date: 05.06.2019
Document: COCKPIT_3-IN-1 Sensor_eng_Add.Rem_v1_eng

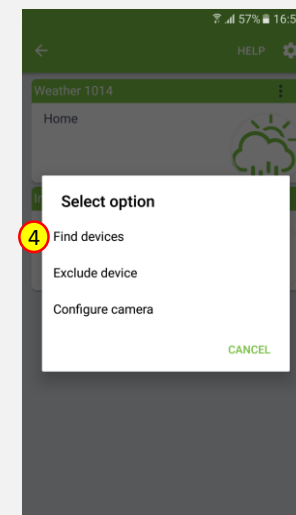
USER MANUAL **EN**

Adding 3-IN-1 Sensor

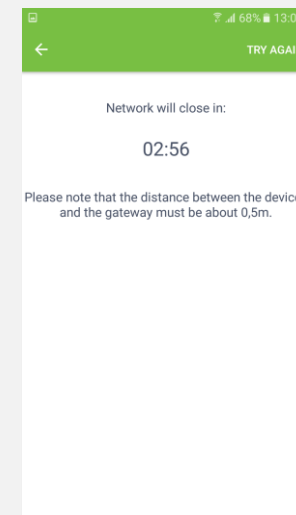
1. Click “Home Setup” tab located in the bottom of Cockpit@Home app.
2. Click „Manage devices”.
3. Click gear button on the top of the screen.



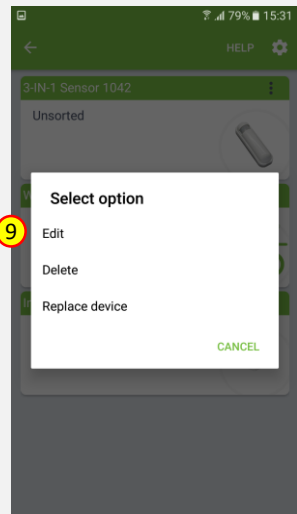
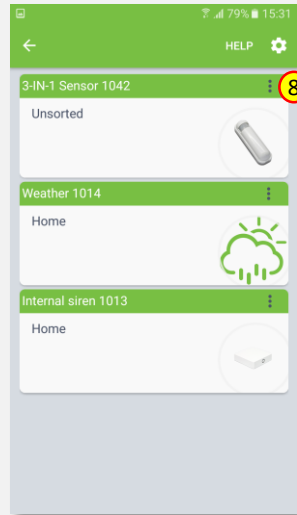
4. Select “Find devices” option.



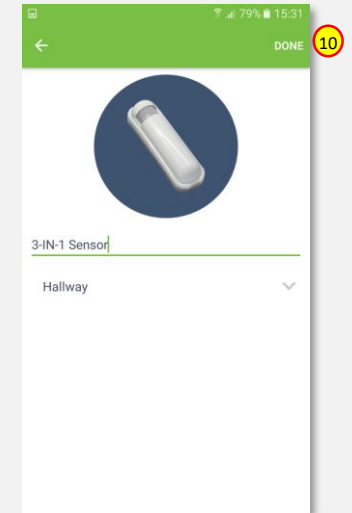
5. COCKPIT gateway will start “Add new devices mode”.
6. Add 3-IN-1 Sensor module by pressing tamper key three times within 1.5 seconds (tamper button is located on the back of the module, please refer to the 3-IN-1 Sensor module user manual for more info).



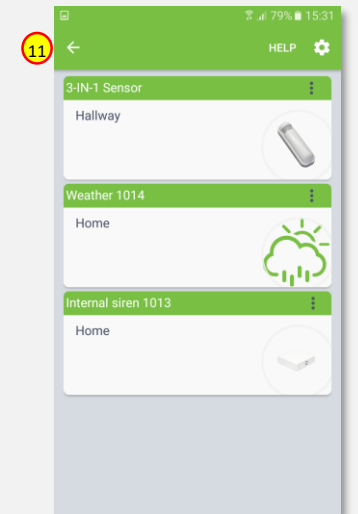
7. After adding process complete, the list of devices appears with 3-IN-1 Sensor module present on it.
8. Click on “settings” icon located next to the 3-IN-1 Sensor module name.
9. Select “Edit” option.



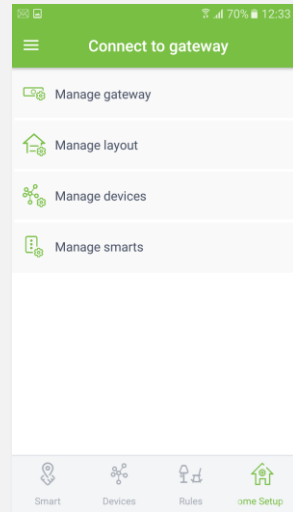
10. Name the device (e.g. 3-IN-1 Sensor) and select room (e.g. Hallway) for the 3-IN-1 Sensor module. When you are done, click “DONE” button.



11. You will be directed back to the screen where you can see all added devices. Press arrow button to proceed.

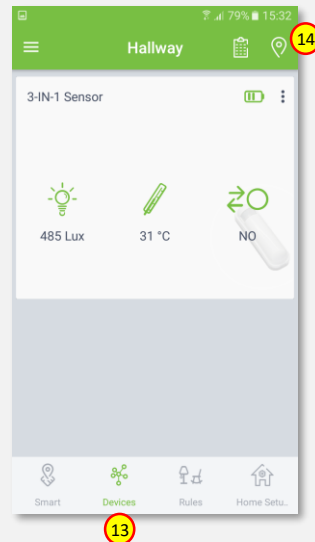


12. Adding procedure for 3-IN-1 Sensor module is now completed. You will be redirected to “Home Setup” screen.



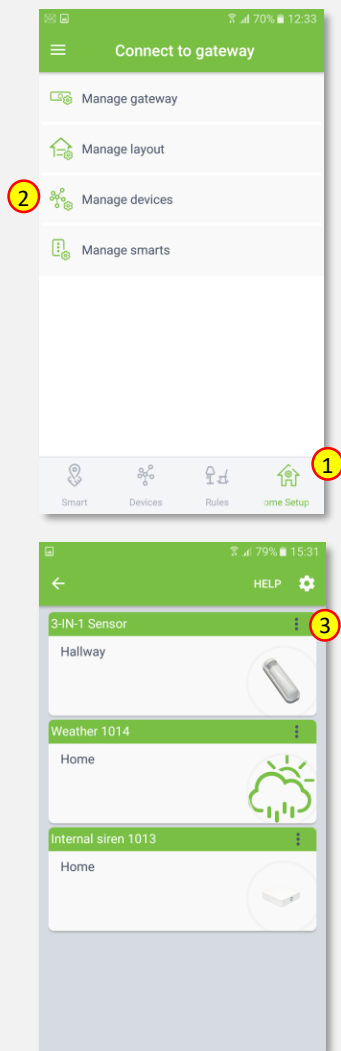
13. To locate newly added device, click “Devices” tab on the bottom of the screen.

14. If device is not shown on the list, choose the proper room by pressing „Device by location” button.

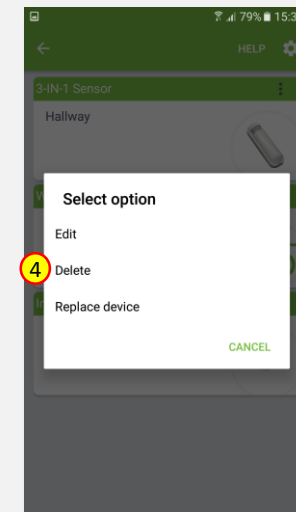


Removing 3-IN-1 Sensor

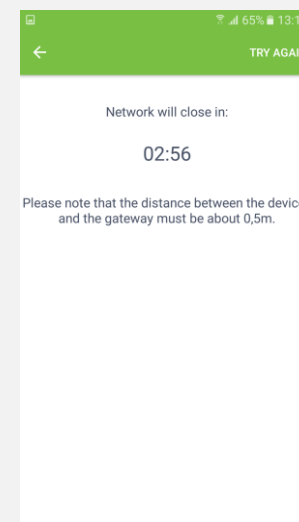
1. Click “Home Setup” tab located in the bottom of Cockpit@Home app.
2. Click „Manage devices” button.
3. Click on “settings” icon located next to the 3-IN-1 module name.



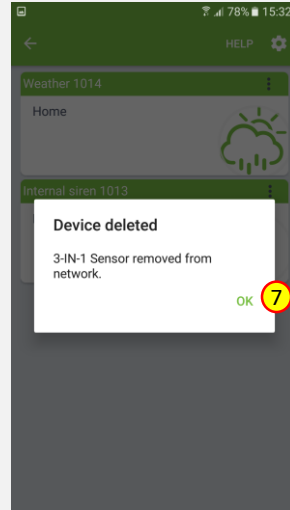
4. Select “Delete” option.



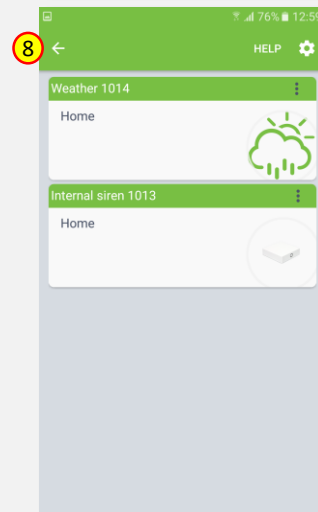
5. COCKPIT gateway will start “Exclude device mode”.
6. Remove 3-IN-1 Sensor by pressing tamper key three times within 1.5 seconds (tamper button is located on the back of the module, please refer to the 3-IN-1 Sensor module user manual for more info).



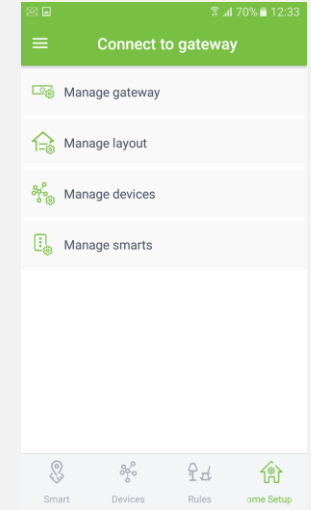
7. When the device / node have been removed, appropriate information will appear on the screen. Click “OK” button to finish the process.



8. You will be directed back to the screen with list of devices, where 3-IN-1 Sensor module is not present anymore. Press arrow button to proceed.



9. Removing procedure for 3-IN-1 Sensor module is now completed. You will be redirected to “Home Setup” screen.





COCKPIT Smart Home d.o.o. Nova Gorica
Ulica Klementa Juga 007
5250 Solkan
Slovenia

E-mail: support@yourcockpit.biz
Tel: +386 5 335 95 00
Fax: +386 5 300 61 43
Web: www.yourcockpit.biz