



Cockpit 1-Phase Smart Meter Add/Remove User Manual

Before starting adding your module, please complete set up procedure for your COCKPIT gateway.

For more information about COCKPIT gateway set up procedure, please refer to the COCKPIT gateway User Manual.



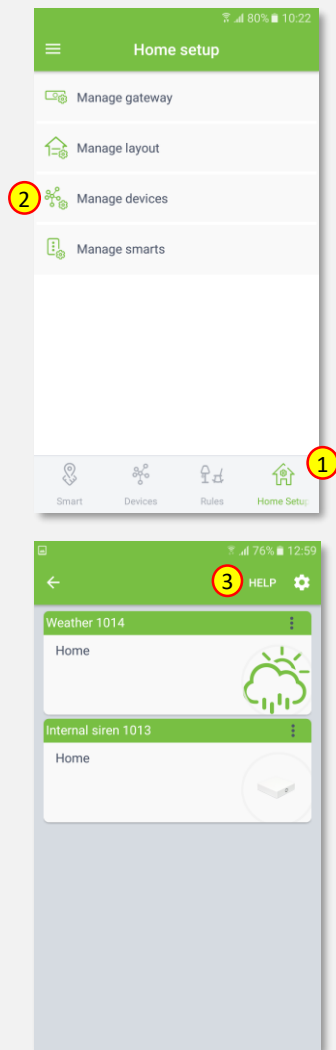
Type: 1-Phase Smart Meter
Ordering code: CKNHTD

Date: 24.05.2019
Document: COCKPIT_1-Phase Smart Meter_Add.Rem_v1_eng

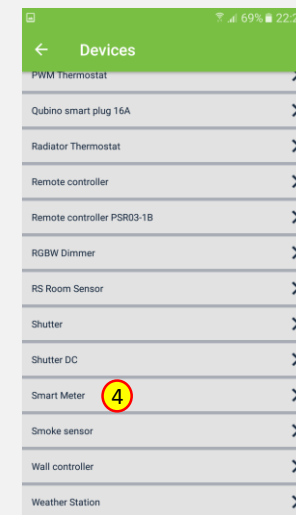
USER MANUAL **EN**

Adding Smart Meter

1. Click “Home Setup” tab located in the bottom of Cockpit@Home app.
2. Click „Manage devices”.
3. Click „HELP” button. It will open the window with the list of instructions (for adding devices).



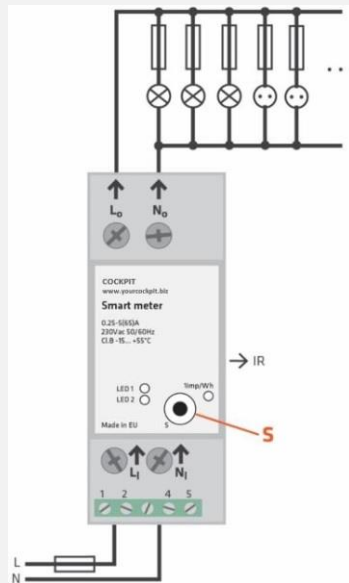
4. Select „Smart Meter”.



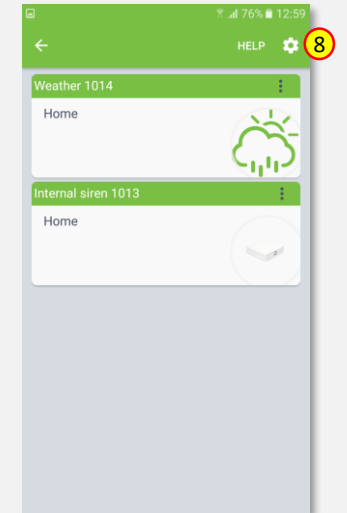
5. Read the instruction and choose one of the available option for adding Smart Meter module.
6. After having read the instructions, click the arrow button (twice) to exit the instructions section.



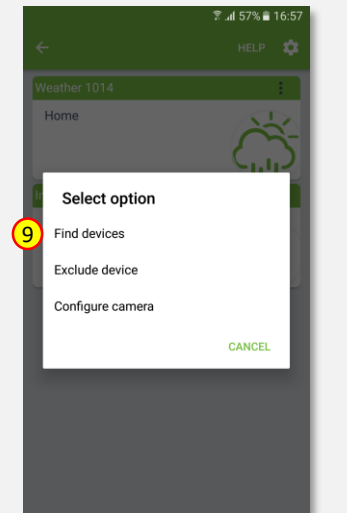
7. Wire Smart Meter module as shown on the diagram.
Next steps depend on the chosen option for adding Smart Meter module. In this manual the use of auto-inclusion feature is presented.



8. Click gear button on the top of the screen.



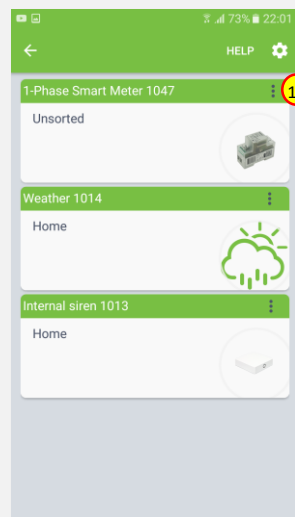
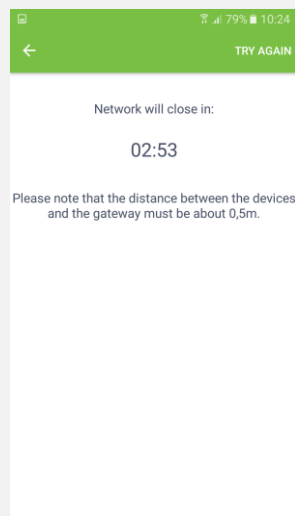
9. Select “Find devices” option.



10. COCKPIT gateway will start “Add new devices mode”. Connect Smart Meter module to the power supply. The inclusion process will start automatically.

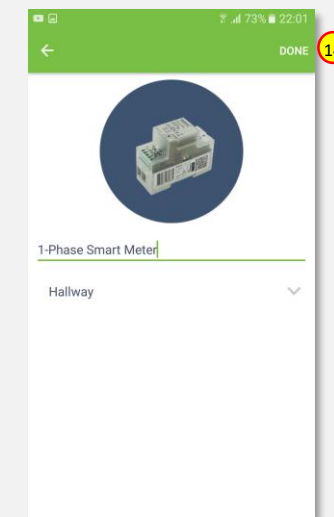
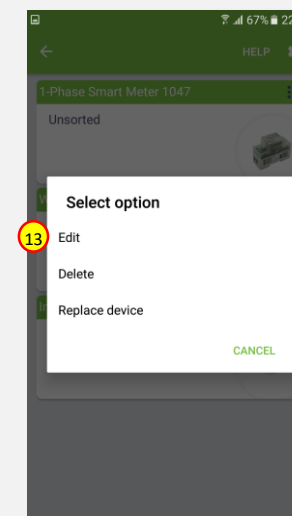
11. After adding process complete, the list of devices appears with Smart Meter module present on it.

12. Click on “settings” icon located next to the Smart Meter module name.

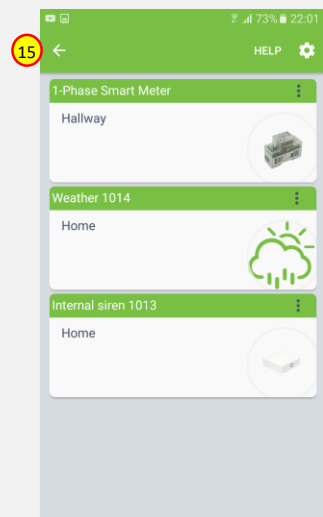


13. Select “Edit” option.

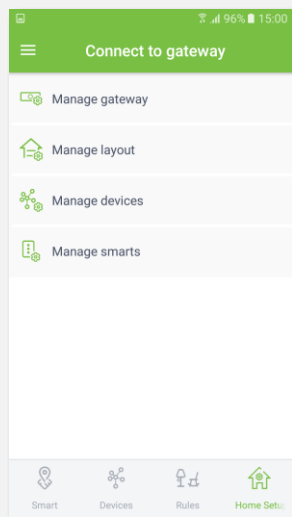
14. Name the device (e.g. 1-Phase Smart Meter) and select room (e.g. Hallway) for the Smart Meter module. When you are done, click “DONE” button.



15. You will be directed back to the screen where you can see all added devices. Press arrow button to proceed.

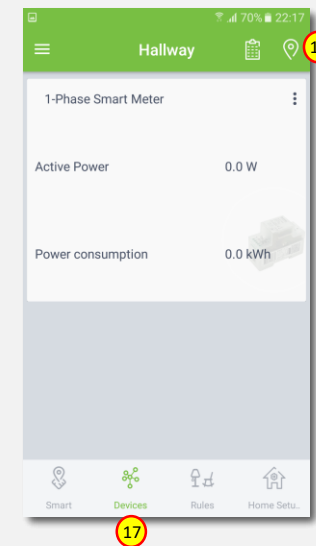


16. Adding procedure for Smart Meter module is now completed. You will be redirected to “Home Setup” screen.



17. To locate newly added device, click “Devices” tab on the bottom of the screen.

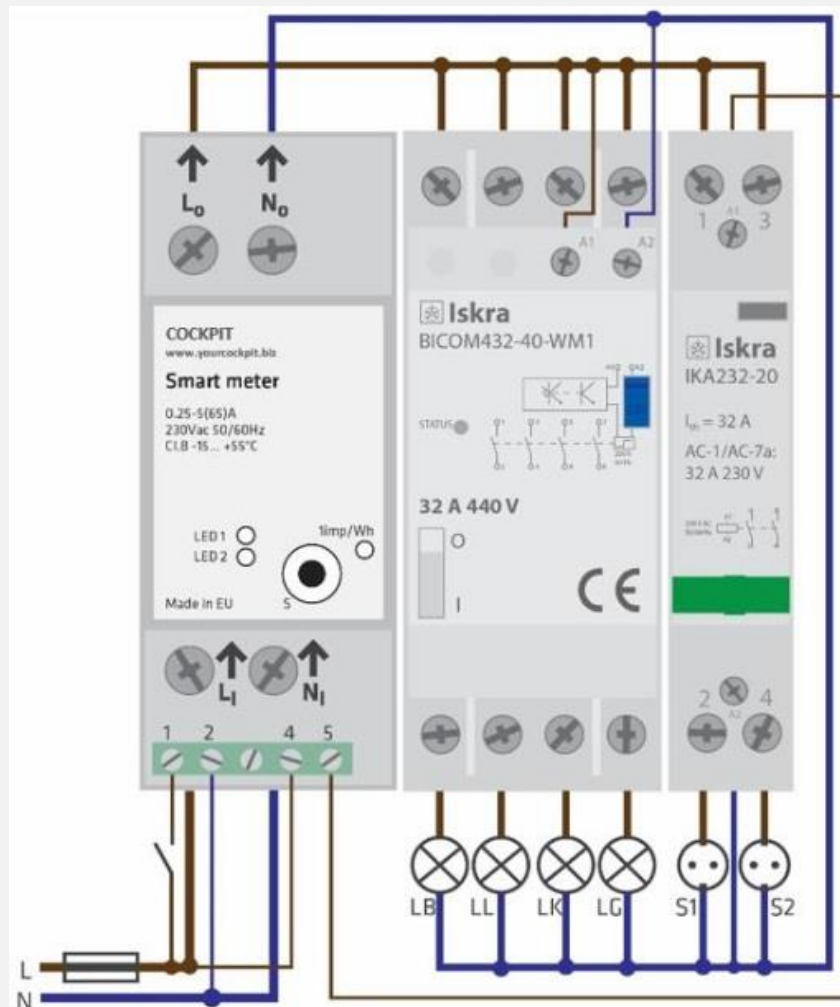
18. If device is not shown on the list, choose the proper room by pressing „Device by location” button.



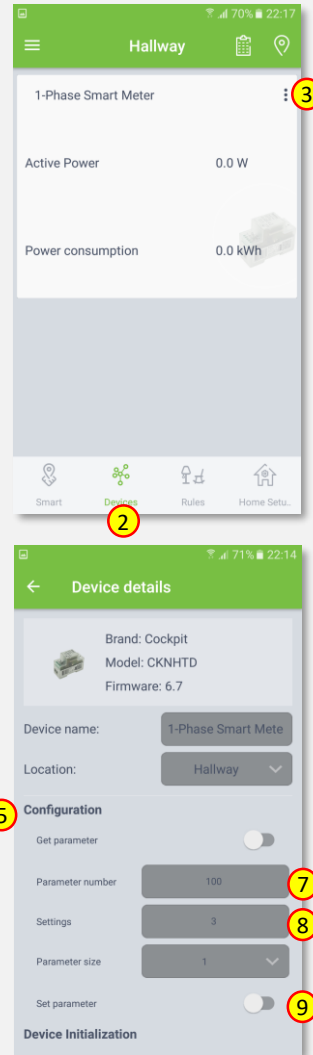
Adding external relays

The Cockpit 1-Phase Smart Meter is the only single phase smart meter worldwide which allows connection of additional two contactors - IKA/BICOM (IKA and BICOM are sold separately - for more info, please see Cockpit catalogue). Use of IKA/BICOM allows to control (turn On/Off) external circuits like e.g. lights, electrical heating, heat pumps etc. In order to install and activate IKA and BICOM, please go through the following steps.

1. Wire the IKA and BICOM modules as shown on the example diagram.
Please note that wiring can vary depending on the specific use-case. For more use-cases and wiring diagrams, please refer to 1-Phase Smart Meter extended user manual.



2. Connect Smart Meter module to the power supply and locate device in the Cockpit@Home app by clicking “Devices” tab on the bottom of the screen.
3. Click on “settings” icon of the Smart Meter module.
4. It opens “Device details” window for different parameters.
5. Scroll down to the “Configuration” section.
6. To activate IKA and BICOM, parameter 100 has to be set.



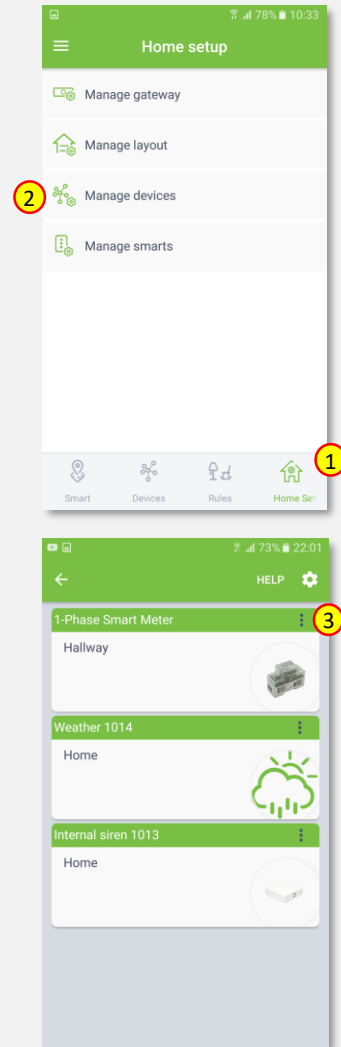
7. Type in 100 in the „Parameter number” field.
8. Type in the „1” (to activate IKA), „2” (to activate BICOM) or „3” (to activate IKA and BICOM) in the „Settings” field.
9. Click on the „Set parameter” button.
10. After parameters change, to make IKA and BICOME active, Smart Meter module has to be excluded from the gateway (without resetting to factory settings) and then re included again (please refer to “Removing Smart Meter” and “Adding Smart Meter” sections of this manual for detailed exclusion/inclusion procedure).

11. When the re-inclusion process is finished, locate Smart Meter module by clicking “Devices” tab on the bottom of the screen of Cockpit@Home app.
12. In this example, both relays (IKA and BICOM) were installed - two outputs are available.

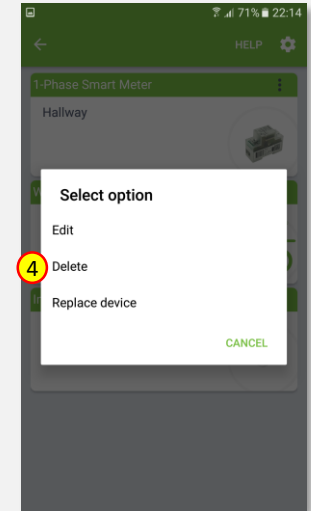


Removing Smart Meter

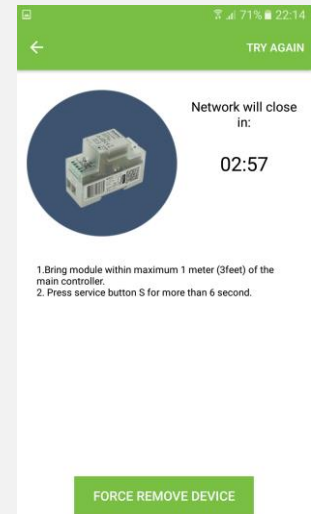
1. Click “Home Setup” tab located in the bottom of Cockpit@Home app.
2. Click „Manage devices” button.
3. Click on “settings” icon located next to the Smart Meter module name.



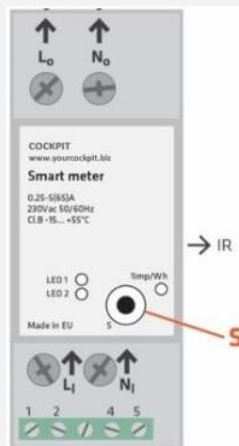
4. Select “Delete” option.



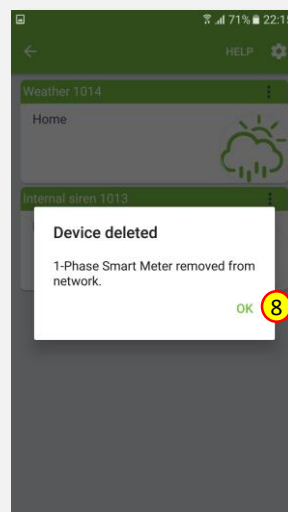
5. COCKPIT gateway will start “Exclude device mode”.
6. Read the instruction and choose one of the available options for remove Smart Meter module.



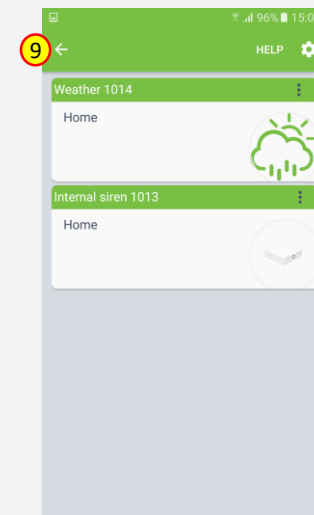
7. Remove the module by connecting it into the mains and pressing the Service button (S) for more than 6 seconds.



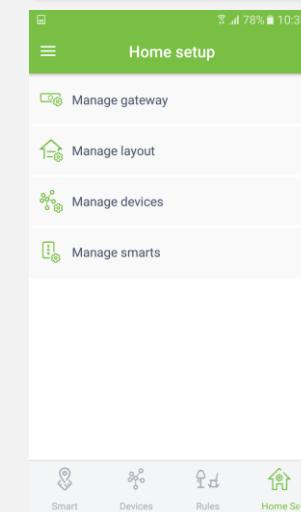
8. When the device / node have been removed, appropriate information will appear on the screen. Click “OK” button to finish the process.



9. You will be directed back to the screen with list of devices, where Smart Meter module is not present anymore. Press arrow button to proceed.



10. Removing procedure for Smart Meter module is now completed. You will be redirected to “Home Setup” screen.





COCKPIT Smart Home d.o.o. Nova Gorica
Ulica Klementa Juga 007
5250 Solkan
Slovenia

E-mail: support@yourcockpit.biz
Tel: +386 5 335 95 00
Fax: +386 5 300 61 43
Web: www.yourcockpit.biz